



Goldsboro Road, SW8

£399,950

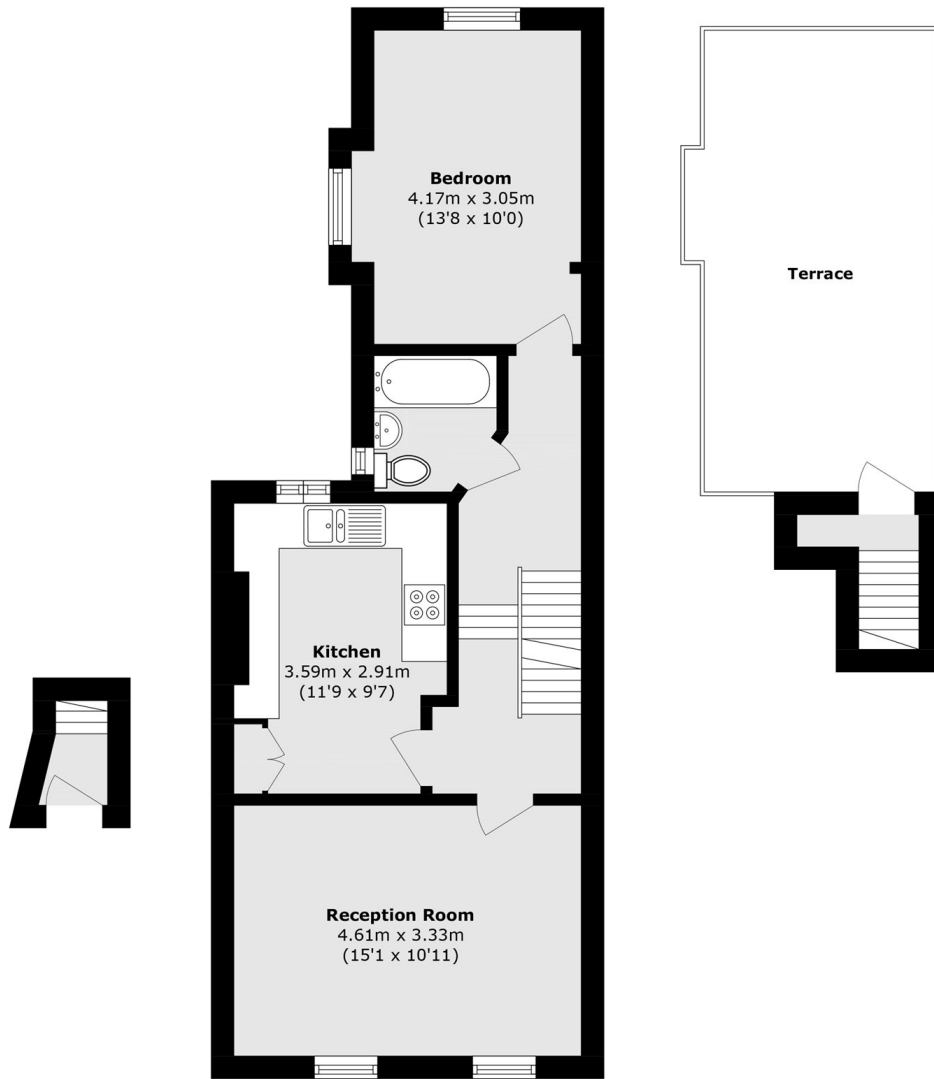
A fantastic one bedroom first floor flat in excellent condition throughout and benefitting from a wonderful West facing roof terrace. The property has a lovely reception which provides space for both living and dining areas. The separate new fitted kitchen is perfect for those who love to cook and includes a breakfast bar. The fabulous roof terrace is a sun trap and perfect for outside dining. The property is being sold with no onward chain.

Goldsboro Road is lovely quiet street, a friendly community just moments from Nine Elms Tube Station (Northern Line) and many bus links and easy access to Vauxhall. There is also an array of local shops, coffee shops and a Sainsbury's superstore.

Features

- One Bedroom
- Healthy Lease
- West Facing Roof Terrace
- High Ceilings
- Quiet Location
- No Onward Chain

Goldsboro Road, LONDON, SW8



Ground Floor

First Floor

Second Floor

Total area (approx.): 54.4 sq. m (585.5 sq. ft)
Terrace area (approx.): 17.8 sq. m (191.5 sq. ft)