



Russell Gardens, W14

£403 Per week

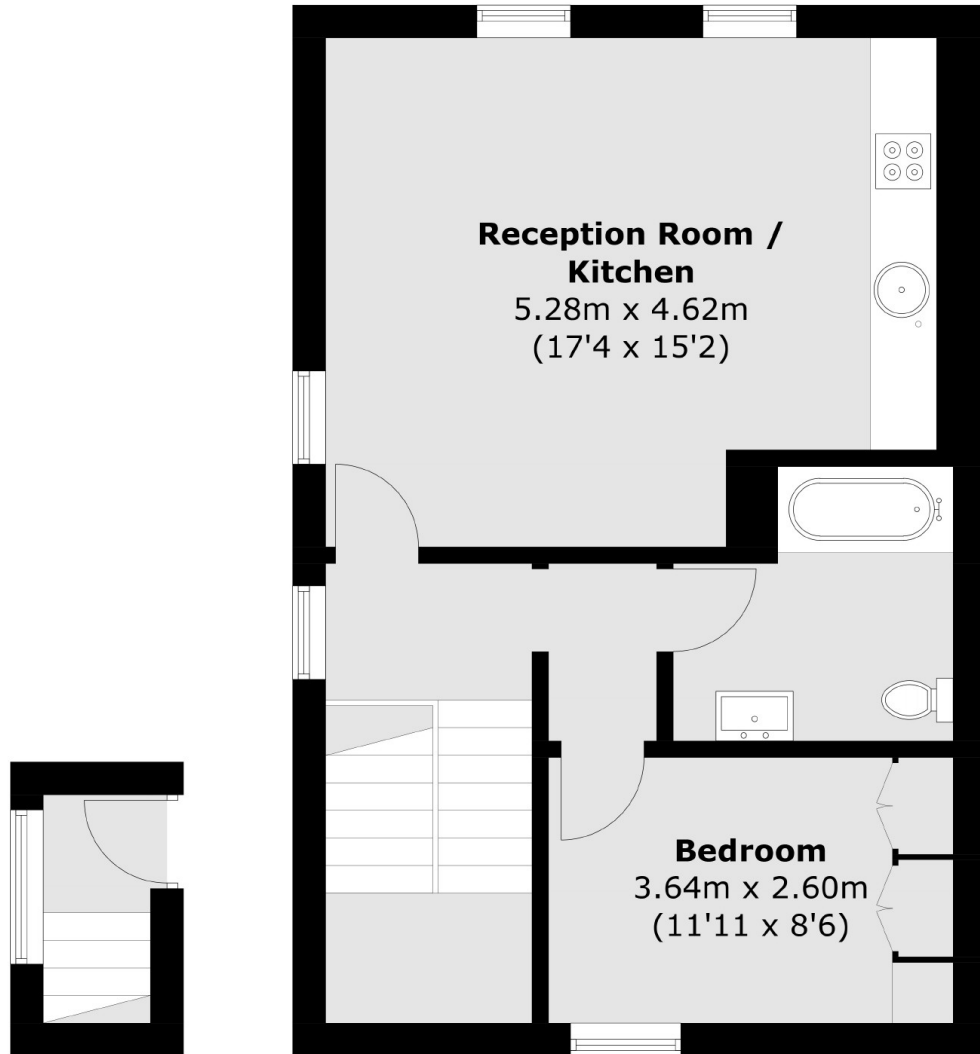
A bright and spacious top floor flat with a large modern reception, a large double bedroom with built-in wardrobes and a modern tiled bathroom, is perfect for a couple or single professional.

Russell Gardens is conveniently located between Holland Road and High Street Kensington. Kensington Olympia station is under a quarter of a mile away.

Features

- Large One Bedroom
- Open Plan
- Ample Storage
- Excellent Location
- Modern Bathroom
- Spacious Reception

Russell Gardens,
London, W14



Ground Floor

First Floor

Total area (approx.): 52.4 sq. m (564.0 sq. ft)