



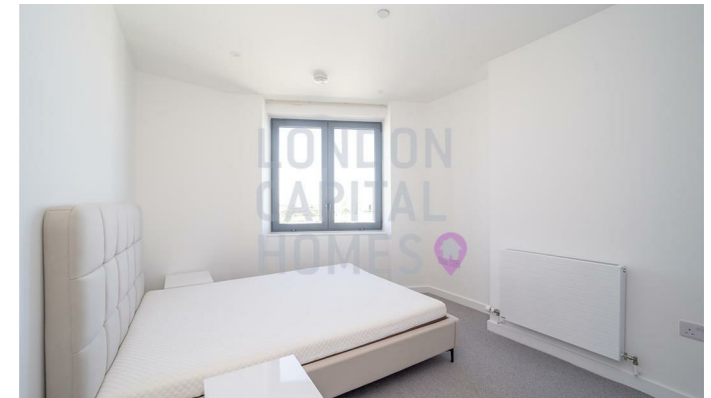
Skyline Apartments, 11 Makers Yard

, London E3 3YP

- Bromley-by-Bow Underground & Devons Road DLR
- 24-Hour Concierge
- Landscaped Gardens
- CTB-G
- Private Terrace with City Views
- Rooftop Terrace Screening Room
- EPC-B

£1,900 PCM

Local Authority **Tower Hamlets**
 Council Tax Band **D**
 EPC Rating **B**



London Office Office
 Spaces Victoria, 25 Wilton Road, Pimlico,
 London, SW1V 1LW

Contact
 020 3084 3094
 XL@londonvictoriagroups.co.uk
 www.londonvictoriagroups.co.uk

Agents Note: Whilst every care has been taken to prepare these particulars, they are for guidance purposes only. All measurements are approximate and for general guidance purposes only and whilst every care has been taken to ensure accuracy, they should not be relied upon and potential buyers/tenants are advised to recheck the measurements.