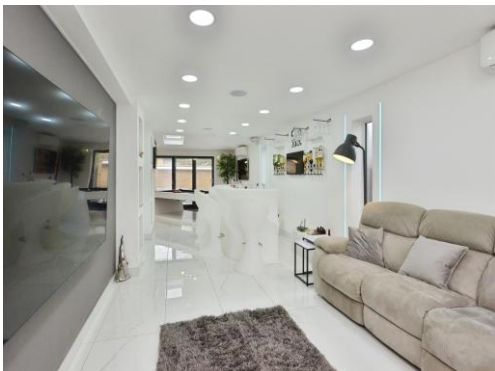




**Connells**

Howitt Drive  
Bradville Milton Keynes



## Property Description

Connells Estate Agents are delighted to present this substantial six-bedroom family home, extensively extended and beautifully refurbished by the current owners to create a truly unique residence. Offering flexible and generous living accommodation across three floors, this impressive home is perfectly designed for modern family life.

Upon entering, you are welcomed by an entrance hall leading to a cloakroom and a gym room - ideal for fitness, a home office, playroom or hobby space. The heart of the home is the stunning kitchen, thoughtfully designed with modern fittings and seamlessly flowing into an expansive open-plan living and dining area that wraps around the rear and side of the property, with dual bi-folding doors leading to the outside space. This exceptional space is perfect for both everyday living and entertaining,

The first floor boasts a bedroom complete with a five-piece en-suite, along with two further bedrooms and a well-appointed family bathroom. The top floor offers three additional bedrooms, two of which feature en-suite facilities, making it ideal for larger families or visiting guests. One of these bedrooms boasts a fantastic vaulted ceiling.

Outside, the property benefits from a low-maintenance garden, providing a relaxing outdoor space, while the front offers a spacious driveway with ample off-road

parking.

## Agents Note

The quality, design, and attention to detail throughout must be seen to be fully appreciated.

Evidence of this are the white porcelain marble tiles throughout the entirety of the ground floor, contemporary radiators that are fitted throughout the home and the ultra modern glass staircase from ground to second floor which provides a central feature of this home. The air conditioning in this home services 7 rooms (including 4 bedrooms) and offers a complete heating and cooling system for the house.

A comprehensive range of photographs accompanies this listing, along with a detailed floorplan showing approximate room sizes and layout. A virtual tour is available on request. For further information or to arrange your personal viewing, please contact Connells Estate Agents today on 01908 674141 or email [miltonkeynes@connells.co.uk](mailto:miltonkeynes@connells.co.uk).

## The Area

Bradville is conveniently located for excellent access into Milton Keynes town centre. Centre:MK is home to a wide range of well known shops and is one of the largest shopping malls in Europe. Further amenities such as bars and restaurants can be found in the theatre district, the Xscape building, and the hub area which in particular is within a short distance of Bradville. The Xscape building is also home to a large multi-screen cinema.

Milton Keynes Central railway station is within a close distance making this an ideal location for commuters. Direct journey times to London take approximately 35 minutes. Bradville is well served with two very good primary schools. Local bus routes across the town, main trunk roads such as the A421, A422, A5 & A509 are easily accessible from Milton Keynes as well as Junctions 13 & 14 of the M1 connecting to the town. Bradville also has its own local shops.

### Entrance Hallway

### Ground Floor W.C

Low level WC and wash hand basin.

### Gym / Study

17' 1" x 9' 2" ( 5.21m x 2.79m )

### Kitchen

16' 5" max x 13' 1" max ( 5.00m max x 3.99m max )

### Family / Dining / Entertaining

36' 9" max x 26' 11" max ( 11.20m max x 8.20m max )

### Bedroom 1 & En-Suite

(First floor) Five piece en-suite to include a low level WC, two wash basins, bath and a shower cubicle.

### Bedroom 2 & En-Suite

18' 4" x 11' 10" ( 5.59m x 3.61m )

(Second floor). Vaulted ceiling. Five piece en-suite to include a low level WC, two wash basins, bath and a shower cubicle.

### Bedroom 3 & En-Suite

12' 6" max x 11' 10" max ( 3.81m max x 3.61m max )

(Second floor). Three piece en-suite to include a low level WC, wash basin and shower cubicle.

### Bedroom 4

16' 5" x 9' 2" ( 5.00m x 2.79m )

### Bedroom 5

### Bedroom 6 / Utility

### Bathroom

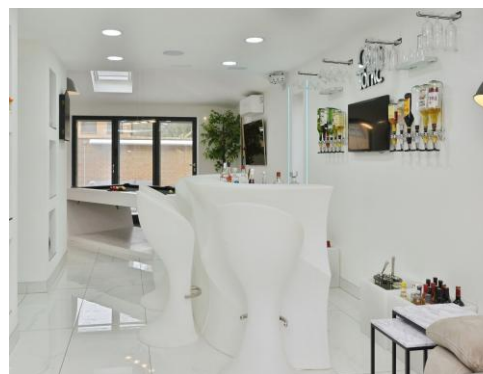
### Rear Garden

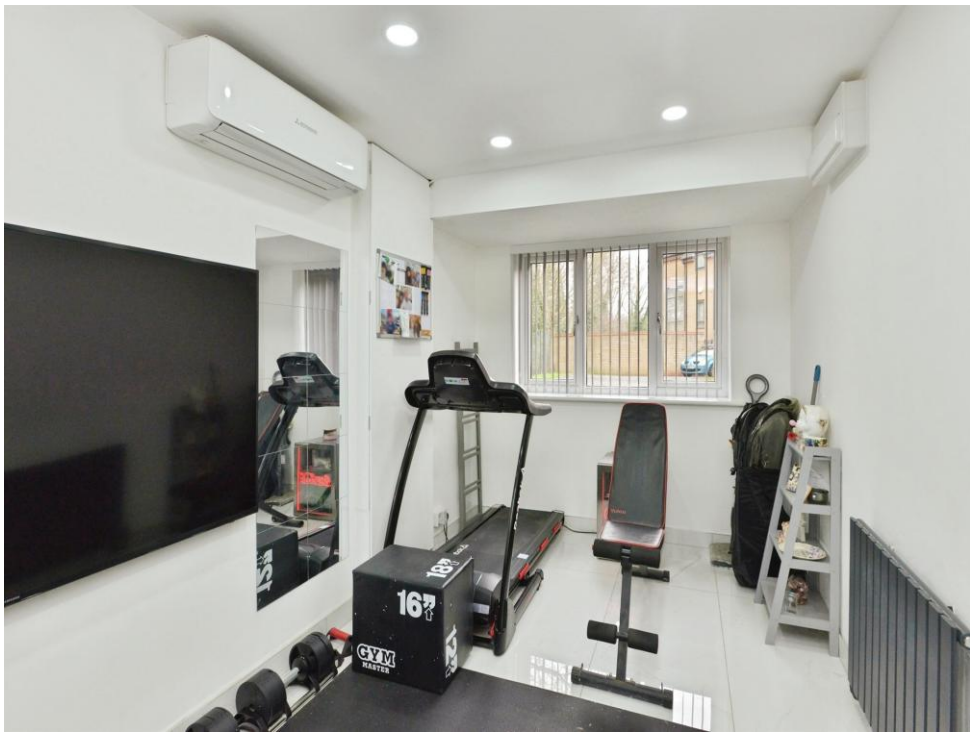
### Courtyard

Outside to the rear of the property there is a shared courtyard exclusively for the use of 6 properties that back on to it.

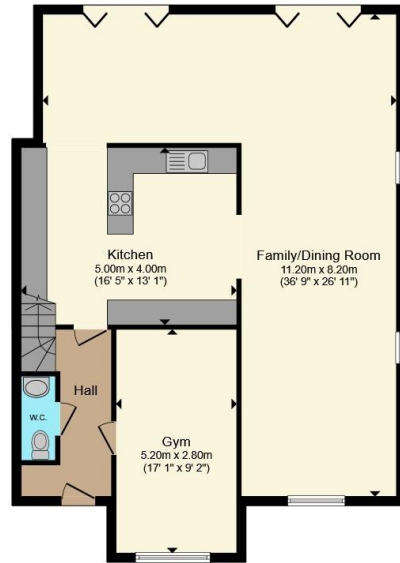
### Driveway

Providing off road parking.

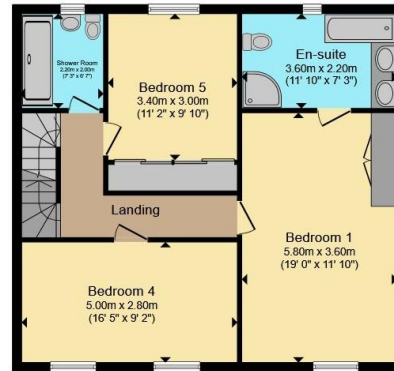




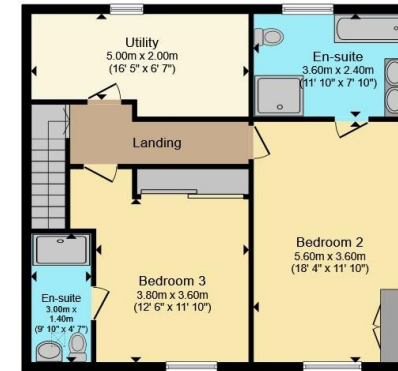




**Ground Floor**



**First Floor**



**Second Floor**

Total floor area 240.5 m<sup>2</sup> (2,589 sq.ft.) approx

This floor plan is for illustrative purposes only. It is not drawn to scale. Any measurements, floor areas (including any total floor area), openings and orientation are approximate. No details are guaranteed, they cannot be relied upon for any purpose and they do not form part of any agreement. No liability is taken for any error, omission or misstatement. A party must rely upon its own inspection(s). Powered by [www.propertybox.io](http://www.propertybox.io)



To view this property please contact Connells on

**T 01908 674 141**  
**E [miltonkeynes@connells.co.uk](mailto:miltonkeynes@connells.co.uk)**

Northgate House 500 Silbury Boulevard  
 MILTON KEYNES MK9 2AD

EPC Rating: C Council Tax  
 Band: C

Tenure: Freehold

**view this property online [connells.co.uk/Property/MKN321093](http://connells.co.uk/Property/MKN321093)**



1. MONEY LAUNDERING REGULATIONS Intending purchasers will be asked to produce identification documentation at a later stage and we would ask for your co-operation in order that there will be no delay in agreeing the sale. 2. These particulars do not constitute part or all of an offer or contract. 3. The measurements indicated are supplied for guidance only and as such must be considered incorrect. Potential buyers are advised to recheck measurements before committing to any expense. 4. We have not tested any apparatus, equipment, fixtures, fittings or services and it is in the buyers interest to check the working condition of any appliances.

Connells Residential is registered in England and Wales under company number 1489613, Registered Office is Cumbria House, 16-20 Hockliffe Street, Leighton Buzzard, Bedfordshire, LU7 1GN. VAT Registration Number is 500 2481 05.

**See all our properties at [www.connells.co.uk](http://www.connells.co.uk) | [www.rightmove.co.uk](http://www.rightmove.co.uk) | [www.zoopla.co.uk](http://www.zoopla.co.uk)**

Property Ref: MKN321093 - 0005