



Pump House Crescent, TW8

£920,000

On the 12th floor stands this impressive modern three double bedroom apartment in this popular riverside development, offering stunning views of the river Thames. Underground parking space, private balcony, concierge and residents gym.

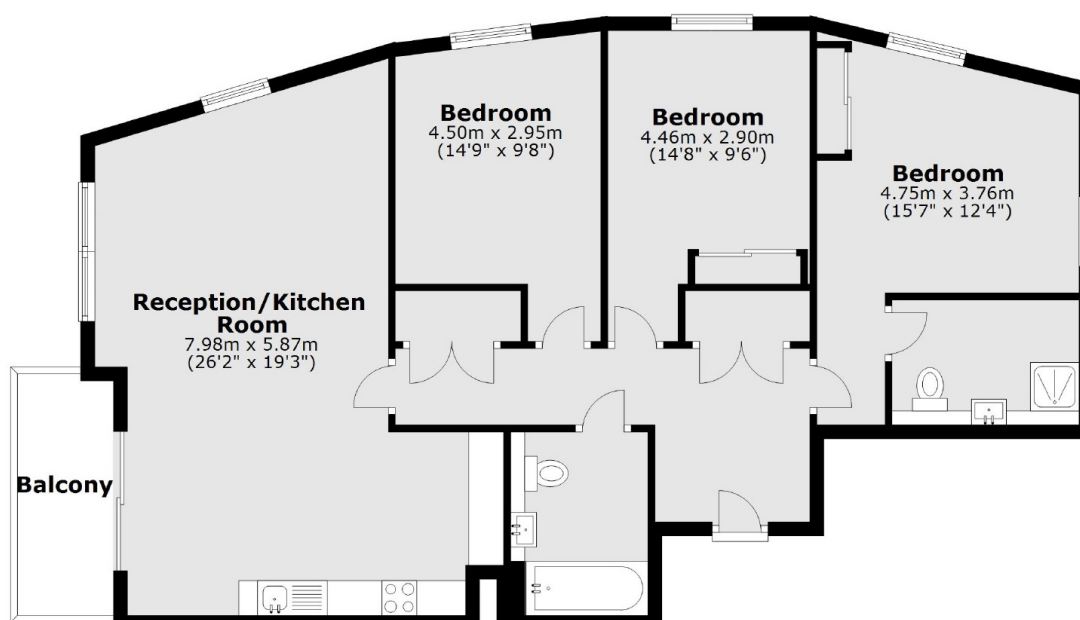
Hyperion Tower is located in the Kew Bridge West Development, a short walk to Kew Bridge station and Gunnersbury underground station. You will also find bars, restaurants, shops of Chiswick and the popular Strand-on-the-Thames with Kew Gardens nearby.

Features

- Great Views
- Riverside Development
- Secure Underground Parking
- Balcony
- Residents Gym
- Three Bedrooms
- Concierge

Pump House Crescent, Brentford, TW8

Twelfth Floor



Total area: approx. 96.6 sq. metres (1039.8 sq. feet)