



Anchor House
Smugglers Way, SW18

CHESTERTONS





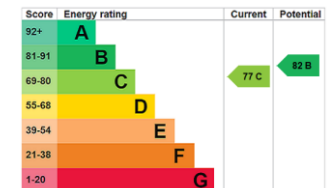
Accommodation comprises an open-plan kitchen/living room, a double bedroom with en-suite shower room and built-in wardrobe, a second double bedroom, separate family bathroom and a good size south west facing balcony.

Riverside West is a popular managed riverside development with 24-hour concierge and is conveniently located for commuting into the city via Wandsworth Town (3min walk to Old York Road), with Waterloo only four stops away.

The development benefits from an on-site convenience store, Virgin Active Gym, Nursery, Little Gym and is within walking distance of the Southside Shopping Centre and local shops and restaurants in Wandsworth and Clapham Junction.

- Two bedrooms, two bathrooms
- 662sqft
- South-west facing terrace
- Riverside development
- Third floor with lift
- Concierge

Offers Over £375,000



Tenure: Leasehold 970 years remaining
Service Charge: £4000 per annum
Ground Rent: £350 per annum
Local Authority: Wandsworth Council
Council Tax Band: F

Chestertons Wandsworth Sales

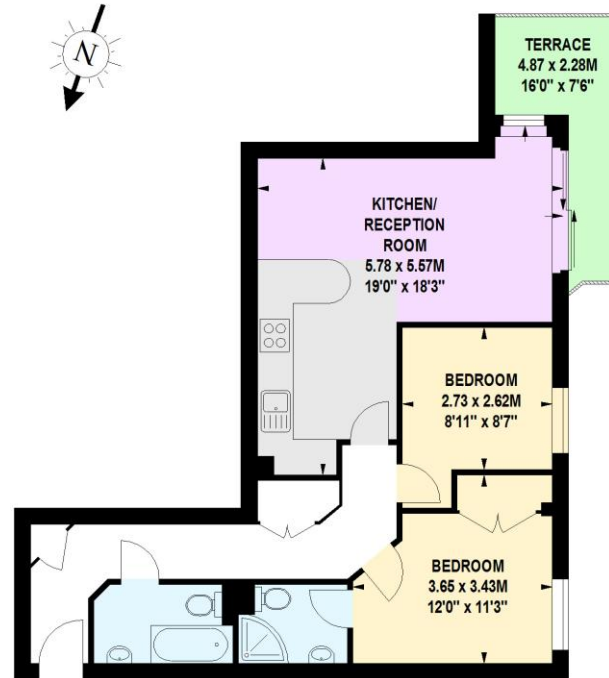
47 East Hill
 London
 SW18 2QE

wandsworth@chestertons.co.uk
 0208 104 7530
 chestertons.co.uk

Anchor House, SW18

Approximate gross internal area

61.50 sq m / 662 sq ft



Third Floor

This floor plan is a representation for guidance purposes only, not for valuation.
Any figure is approximate and must not be relied on as a statement of fact.
Copyright of Wyatt Dixon Homes

WYATT DIXON
HOMES

