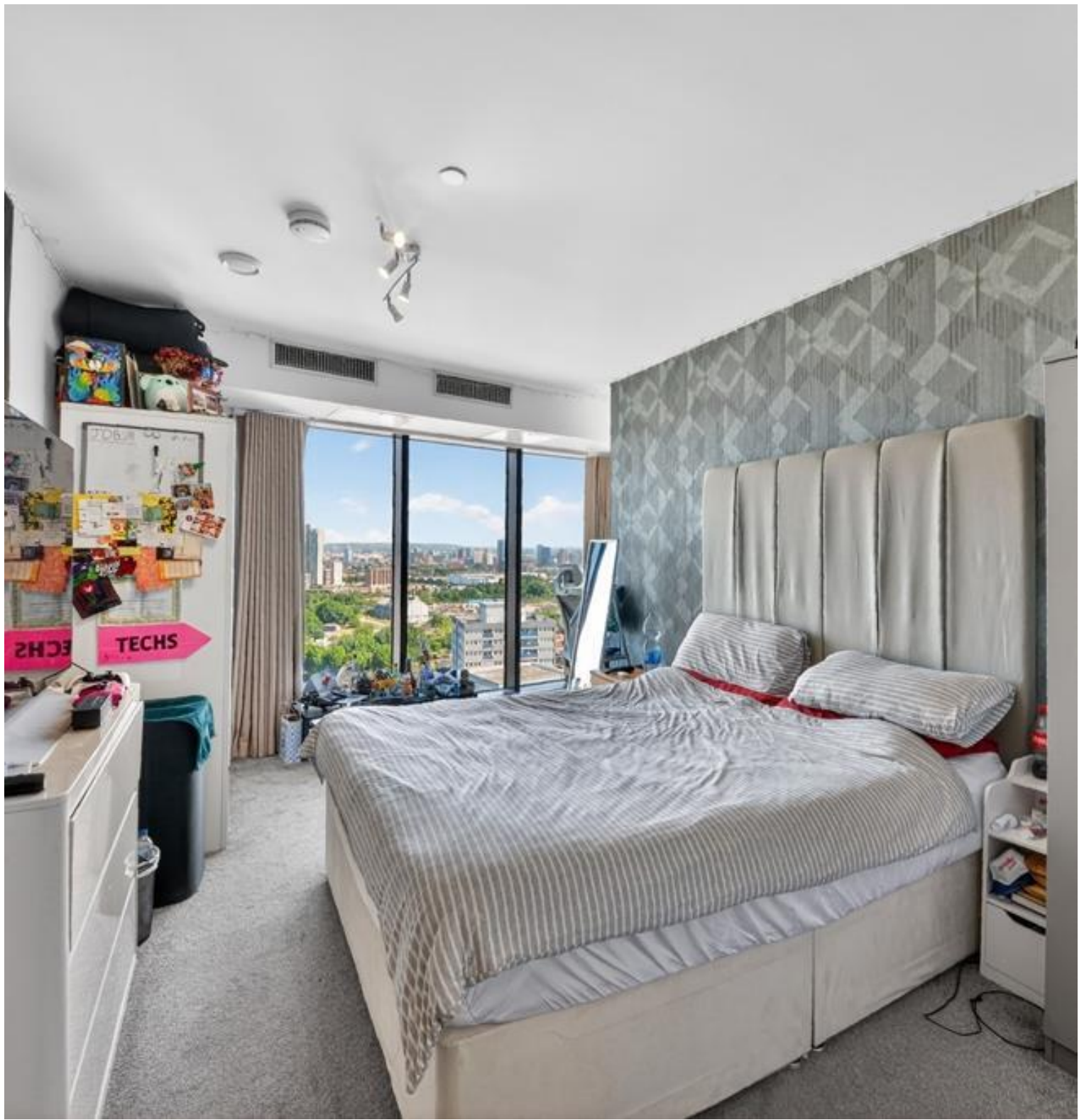


## High Street, London E15

Offers In Excess Of £650,000 Leasehold







## Description

This three-bedroom apartment in the popular River Heights development offers approximately 1,111 square feet of well-designed living space in central Stratford. Set on the 21st floor, the residence benefits from impressive views across the canal towards the Olympic Stadium, providing an attractive perspective over this vibrant area of East London.

The apartment's most captivating feature is its trio of private balconies, each offering sweeping canal views that transform the everyday into the extraordinary. These outdoor spaces provide the perfect setting for morning coffee or evening drinks while watching the world go by along the waterway below. The generous reception and kitchen area flows naturally, creating an ideal space for both relaxed living and entertaining, bathed in natural light and framed by those remarkable views.

The accommodation comprises three well-proportioned double bedrooms, including a principal bedroom suite with en-suite bathroom and private balcony access. A second contemporary bathroom serves the remaining bedrooms, both thoughtfully configured to maximise space and light. The apartment's position ensures abundant natural light throughout, while the expansive proportions create a genuine sense of space and calm above the vibrant streets below.

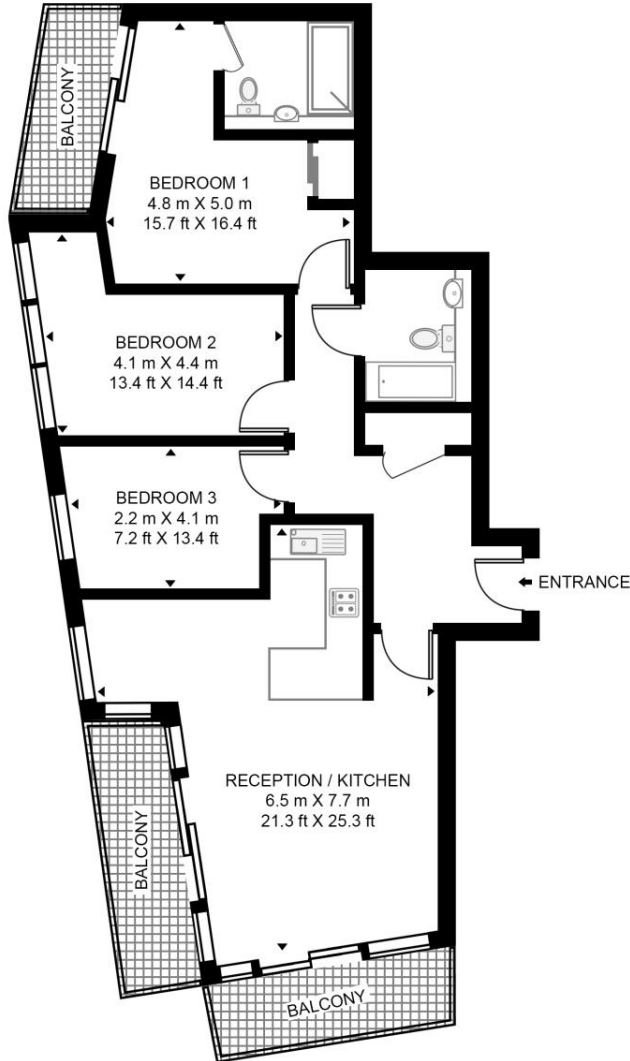
- Three bedrooms
- Two bathrooms (one en-suite)
- 3 Balconies with Olympic Park views
- 21st Floor
- Approx. 1111 sq. ft (103.2 sq. m)
- Residents' gym
- 24h Concierge service
- EPC Rating B

# Floorplan

1,111 sq ft | 103 sq m

## RIVER HEIGHTS

APPROXIMATE GROSS INTERNAL FLOOR AREA 1111 SQ.FT (103.2 SQ.M)



TWENTY FIRST FLOOR



This floor plan has been defined by the RICS Code of Measurement. This floor plan and all others are for approximate representative purposes only and upon usage is agreed to as such by the client.  
WWW: [hdvirtualart.com](http://hdvirtualart.com) | TEL: 0203.974.1567 | EMAIL: [info@hdvirtualart.com](mailto:info@hdvirtualart.com)

Stratford  
5 Station Street,  
London E15 1DA  
+4420 3147 1500  
[Lettingsstratford@eu.jll.com](mailto:Lettingsstratford@eu.jll.com)

*Urban living, your way.*

[jll.co.uk/residential](http://jll.co.uk/residential)

© 2019 Jones Lang LaSalle IP, Inc. All rights reserved. All information contained herein is from sources deemed reliable; however, no representation or warranty is made to the accuracy thereof.

