



The Wheelwrights | Trimley St. Mary | Felixstowe | IP11 0YR

Guide Price £180,000

NICHOLAS
ESTATES

Key features

- No Chain
- Requires Modernisation & Updating
- Two Bedrooms
- Off Road Parking
- Cul-De-Sac Location

Description

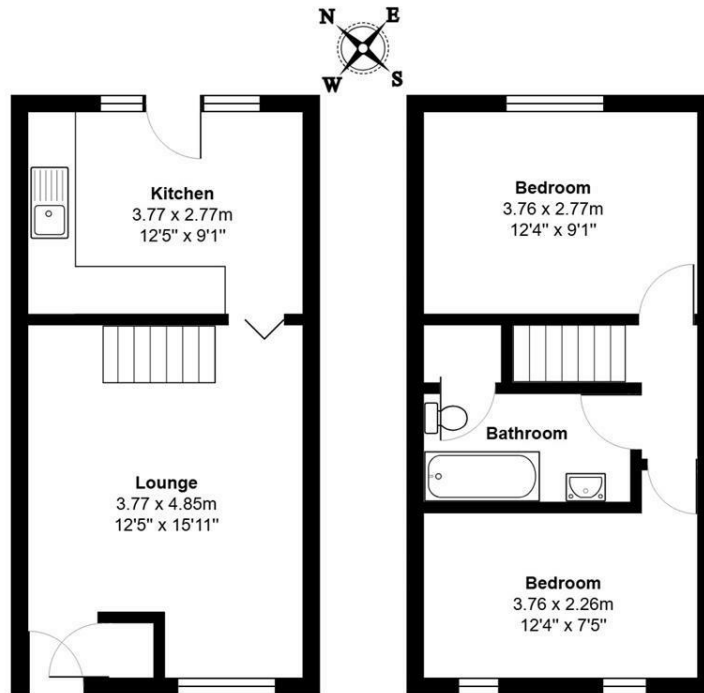
A two bedroom terrace house situated at the end of a cul-de-sac in the popular village of Trimley St Mary, requiring modernisation and updating throughout. The accommodation comprises, lounge and kitchen/diner to the ground floor. The first floor offers two bedrooms and a bathroom. Outside the property benefits a driveway providing off road parking and a fully enclosed rear garden. Benefitting, gas fired central heating and uPvc double glazed windows. The property is offered with no onward chain.

Directions

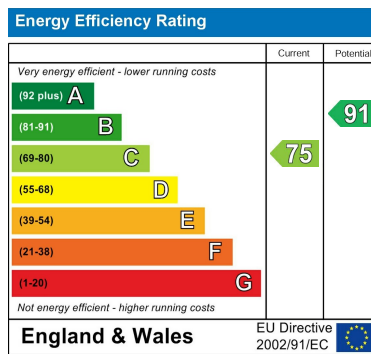




Floor plans



Total Area: 58.6 m² ... 631 ft²



Council Tax Band **B** EPC Rating **C**

NICHOLAS

ESTATES

173 Hamilton Road
 Felixstowe
 Suffolk
 IP11 7DR

01394 282828

felixstowe@yourhome.co.uk
 yourhome.co.uk