



| Park Road | Altrincham





£4,000 PCM

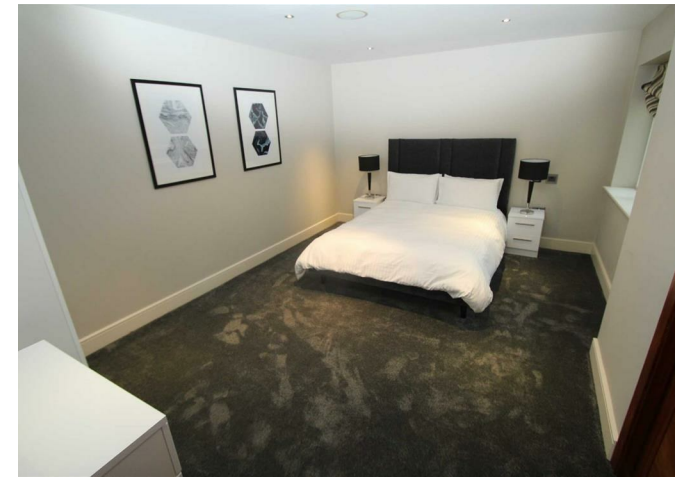


\*\*\* AVAILABLE JULY \*\*\* Park Road, BOWDON - Luxury 2nd floor 3 bedroom apartment within a stunning block in a prime location. The interior and furnishings are of the highest quality and the apartment is ready to move into immediately! Fabulous open plan lounge kitchen and dining with balcony to the front aspect. The kitchen is fully fitted with state of the art appliances including wine fridge and coffee machine. The apartment has been fitted with an intelligent media system controlling both media and heating. Three large double bedrooms all with en suites and the master bedroom includes a walk in wardrobe. Lift access, under ground parking and security gates. Available July. Fully furnished £4,000pcm. Please contact the Hale office to arrange viewings 0161 929 9898 option 2.



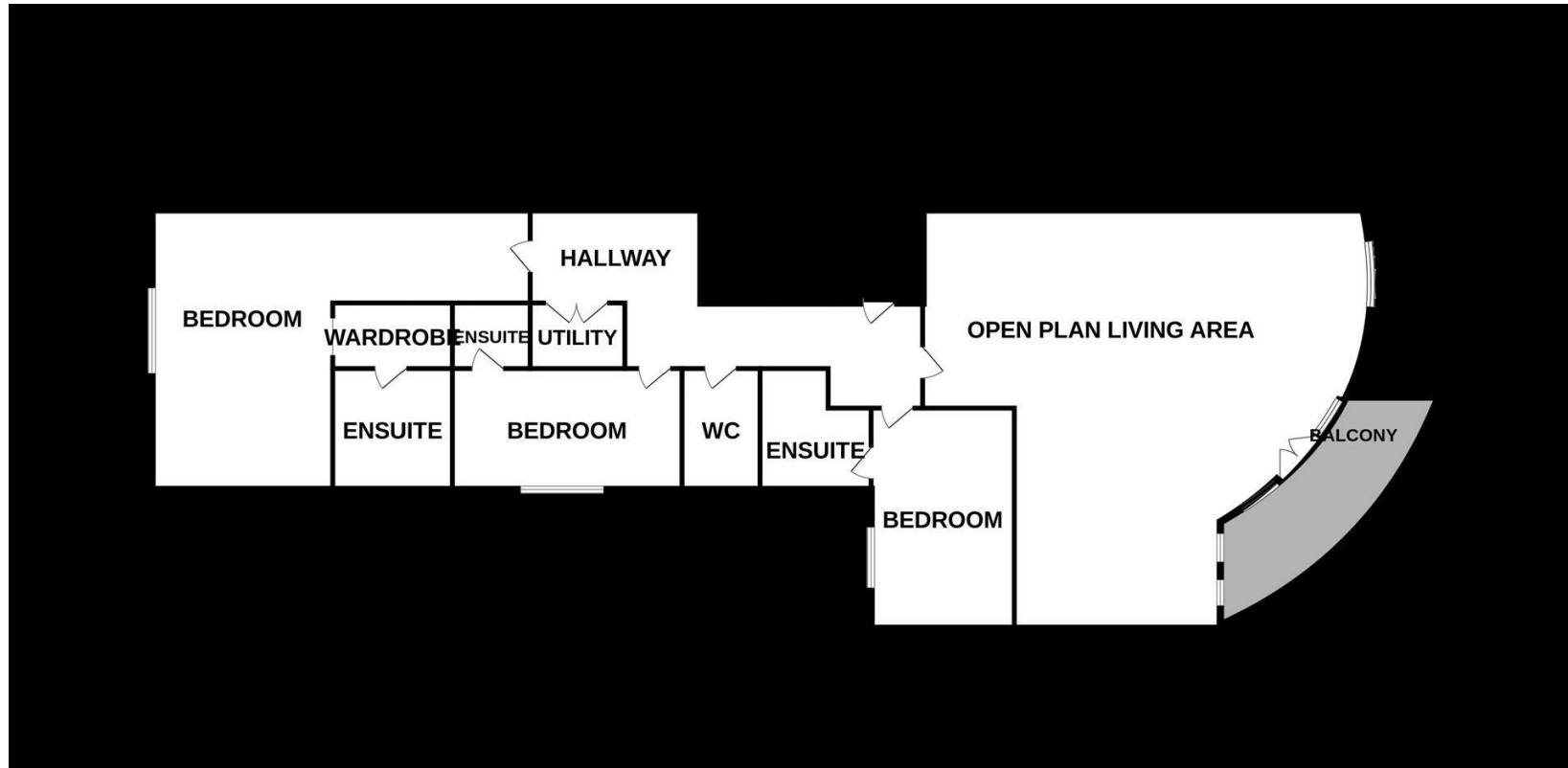
- APARTMENT
- FURNISHED

- THREE DOUBLE BEDROOMS
- BALCONY



- THREE BATHROOMS
- OFF ROAD PARKING

01619291994



Jordan Fishwick  
172 Ashley Road  
Hale  
Cheshire  
WA15 9F

[halemanagement@jordanfishwick.co.uk](mailto:halemanagement@jordanfishwick.co.uk)

IMPORTANT: we would like to inform prospective purchasers that these sales particulars have been prepared as a general guide only. A detailed survey has not been carried out, nor the services, appliances and fittings tested. Room sizes should not be relied upon for furnishing purposes and are approximate. If floor plans are included, they are for guidance only and illustration purposes only and may not be to scale. If there are any important matters likely to affect your decision to buy, please contact us before viewing the property.