



£300,000

3 Bedroom Semi-Detached House for sale

6 HOLBORN, LYDIARD MILLICENT, SWINDON



EweMove
SALES AND LETTINGS



Overview

Fields behind, park on your doorstep, and a home that just feels right. Bright, sociable, and perfectly placed in Lydiard Millicent, this one's ready to charm your socks off. Don't hang about... homes like this don't stick around for ewe long.



Key Features

- Peaceful Setting with Open Fields Behind
- Kitchen Made for Chats & Catch-Ups
- Sunny Lounge with 'Mood-Lifting' Window
- Garden Ready for Play or Planting





Looking for a home that feels like a breath of fresh air? You've just found it.

Tucked away in the ever-popular Lydiard Millicent, this charming three-bedroom semi-detached home delivers that rare mix of cosy comfort and wide-open outlooks. Step inside and you're greeted by a bright, welcoming lounge to the front, where a generous window lets the light pour in and instantly lifts your mood. It's the perfect spot to unwind after a long day or settle in for a lazy Sunday.

Head through to the kitchen and things get even better. Positioned at the rear, there's plenty of room not just to cook, but to live. Think morning coffees at the table, midweek catch-ups, and the occasional "just one more glass" kind of evening. It's a space that works around you.



Upstairs, the layout is spot on. The main bedroom sits proudly at the front, complete with its own ensuite for that little touch of everyday luxury. Bedrooms two and three sit quietly at the rear, ideal for family, guests, or even that long-promised home office.

Outside is where this home really starts to show off. The garden hits that sweet spot. Big enough for a trampoline, a veggie patch, or summer get-togethers, yet still easy to manage. And beyond? Open fields stretching out behind you, giving you privacy, peace, and a view that never gets old.

Floorplans

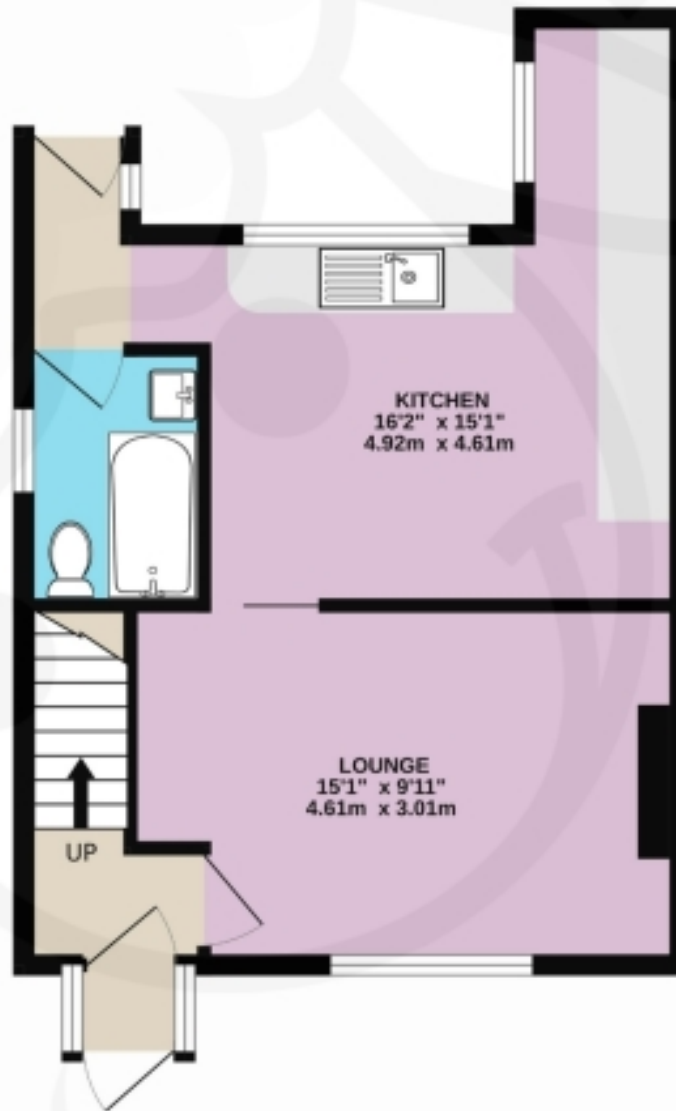


TOTAL FLOOR AREA : 746 sq.ft. (69.3 sq.m.) approx.

Whilst every attempt has been made to ensure the accuracy of the floorplan contained here, measurements of doors, windows, rooms and any other items are approximate and no responsibility is taken for any error, omission or mis-statement. This plan is for illustrative purposes only and should be used as such by any prospective purchaser. The services, systems and appliances shown have not been tested and no guarantee as to their operability or efficiency can be given.

Made with Metropix ©2026

Floorplans



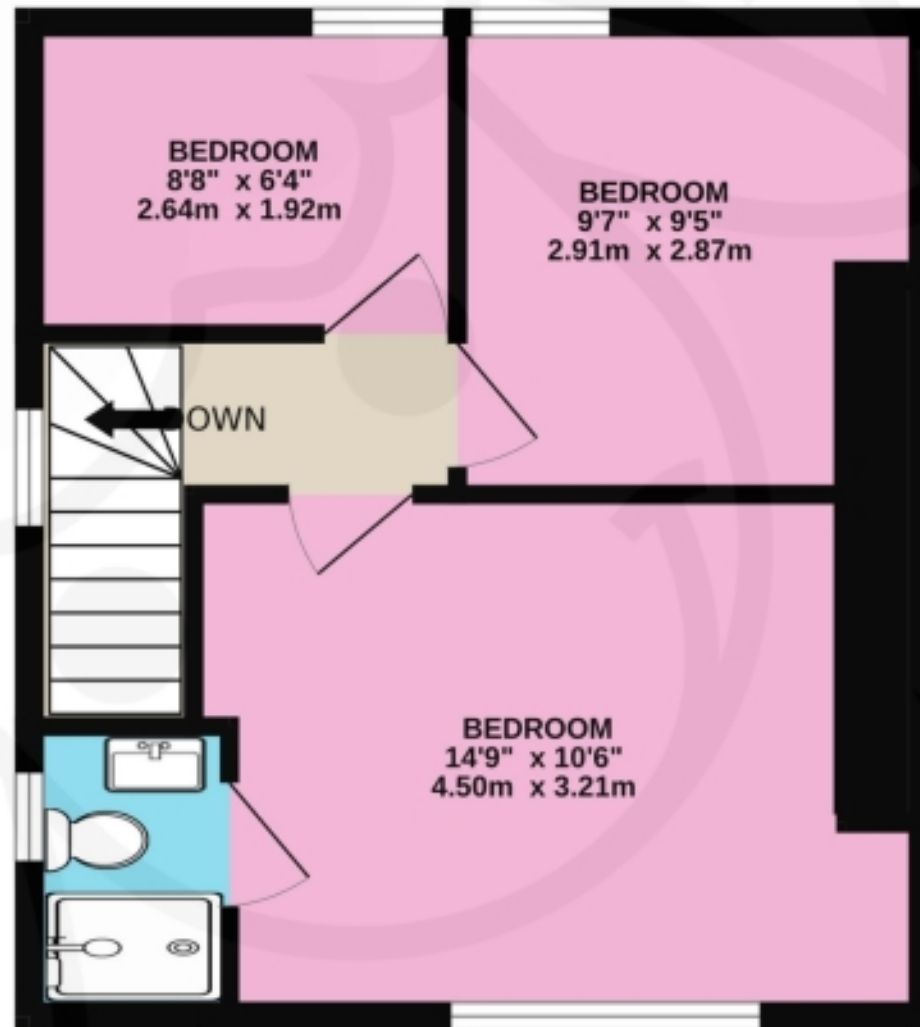
GROUND FLOOR



EweMove
SALES AND LETTINGS

Whilst every attempt has been made to ensure the accuracy of the floorplan contained here, measurements of doors, windows, rooms and any other items are approximate and no responsibility is taken for any error, omission or mis-statement. This plan is for illustrative purposes only and should be used as such by any prospective purchaser. The services, systems and appliances shown have not been tested and no guarantee as to their operability or efficiency can be given.
Made with Metropix ©2026

Floorplans



FIRST FLOOR



Whilst every attempt has been made to ensure the accuracy of the floorplan contained here, measurements of doors, windows, rooms and any other items are approximate and no responsibility is taken for any error, omission or mis-statement. This plan is for illustrative purposes only and should be used as such by any prospective purchaser. The services, systems and appliances shown have not been tested and no guarantee as to their operability or efficiency can be given.
Made with Metropix ©2026

EPC

Score	Energy rating	Current	Potential
92+	A		
81-91	B		82 B
69-80	C		
55-68	D	67 D	
39-54	E		
21-38	F		
1-20	G		



Marketed by EweMove Swindon

01793 236 598 (24/7)
swindon@ewemove.com

