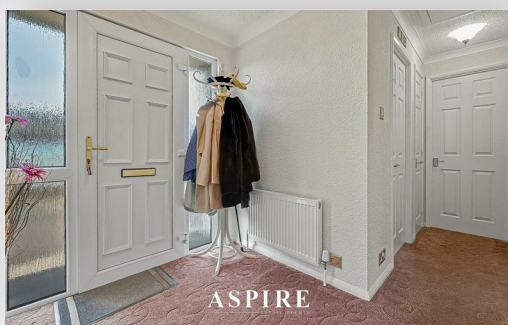


**To arrange a viewing contact us
today on 01268 777400**



Creek Road, Canvey Island £230,000

Tucked away at the rear of the highly sought-after Kings Park, this impressive two-bedroom double-width park home offers the perfect blend of space, style, and convenience.

With secure key fob access via the rear gate, coming and going couldn't be easier. Kings Park residents enjoy a truly exclusive lifestyle, complete with 24-hour security, an on-site clubhouse, swimming pool, fishing lake, and convenience shop.

Tucked away at the rear of the highly sought-after Kings Park, this impressive two-bedroom double-width park home offers the perfect blend of space, style, and convenience.

With secure key fob access via the rear gate, coming and going couldn't be easier. Kings Park residents enjoy a truly exclusive lifestyle, complete with 24-hour security, an on-site clubhouse, swimming pool, fishing lake, and convenience shop.

Inside, the property is bright and welcoming, featuring a spacious open-plan lounge and dining area — ideal for both relaxing and entertaining. The well-equipped kitchen is complemented by a separate utility room, providing plenty of extra storage. The master bedroom benefits from a walk-in wardrobe and en-suite bathroom, while the second double bedroom includes fitted wardrobes for added practicality. A modern walk-in shower has been recently fitted, enhancing the home's contemporary finish.

Externally, the property offers off-street parking and a large private patio area, perfect for al fresco dining or unwinding outdoors.

Don't miss this fantastic opportunity — call Aspire Estate Agents today to arrange your viewing!

Lounge/ Diner

19'8" x 19'9"

Kitchen

9'6" x 12'5"

Utility Room

7'7" x 5'9"

Master Bedroom

9'5" x 11'5"

Second Bedroom

9'5" x 8'6"

W/C

3'7" x 7'9"

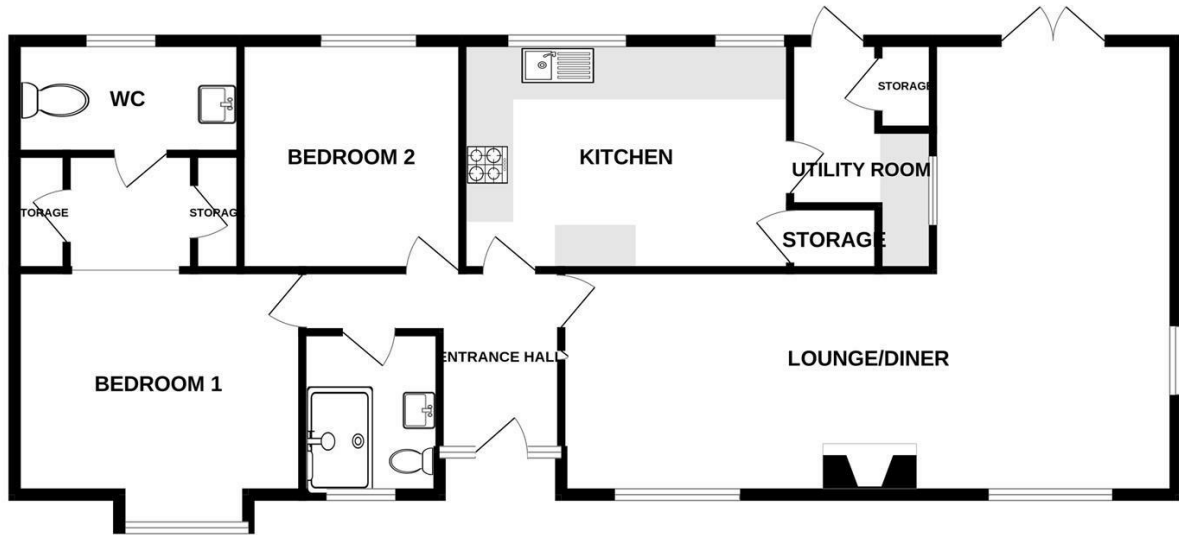
Bathroom

6'4" x 6'9"

Hallway

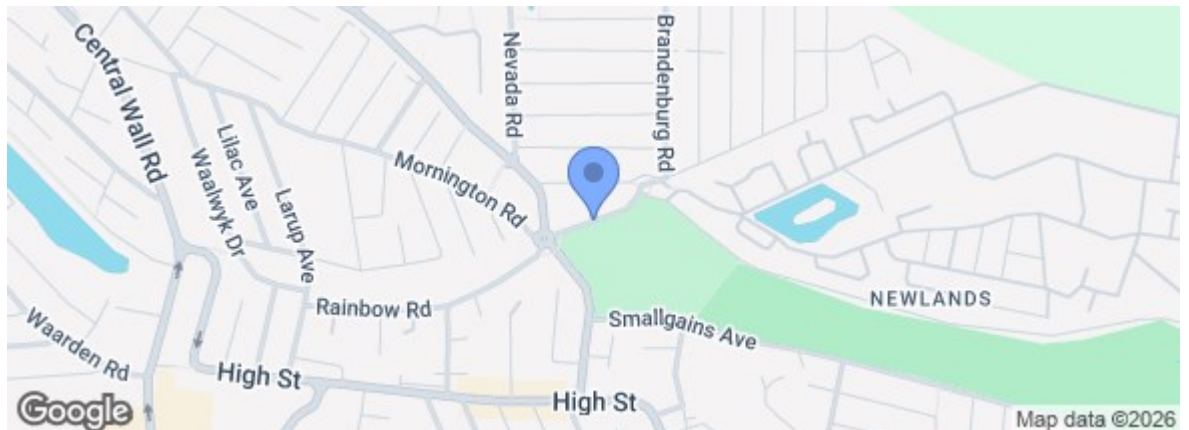
3'0" x 13'8"

GROUND FLOOR
1196 sq.ft. (111.1 sq.m.) approx.



TOTAL FLOOR AREA: 1196 sq.ft. (111.1 sq.m.) approx.

Whilst every attempt has been made to ensure the accuracy of the floorplan contained here, measurements of doors, windows, rooms and any other items are approximate and no responsibility is taken for any error, omission or mis-statement. This plan is for illustrative purposes only and should be used as such by any prospective purchaser. The services, systems and appliances shown have not been tested and no guarantee as to their operability or efficiency can be given.
Made with Metropix ©2025



Under the Property Misdescriptions Act 1991 we make every effort to ensure our sales details are accurate but they are a general outline and do not constitute any part of an offer or contract. Any services, equipment and fittings have not been tested and no warranty can be given as to their condition. We strongly recommend that all the information provided be verified by your advisors and in particular, measurements required for a specific purpose such as fitted furniture or carpets. Please tell us if you have any problems and members of our branches will help either over the phone or in person. A copy of our complaints procedure is available on request. The details are issued on the strict understanding that any negotiations in respect of the property named herein are conducted through Aspire Estate Agents.