



Shad Thames, SE1

£920,000

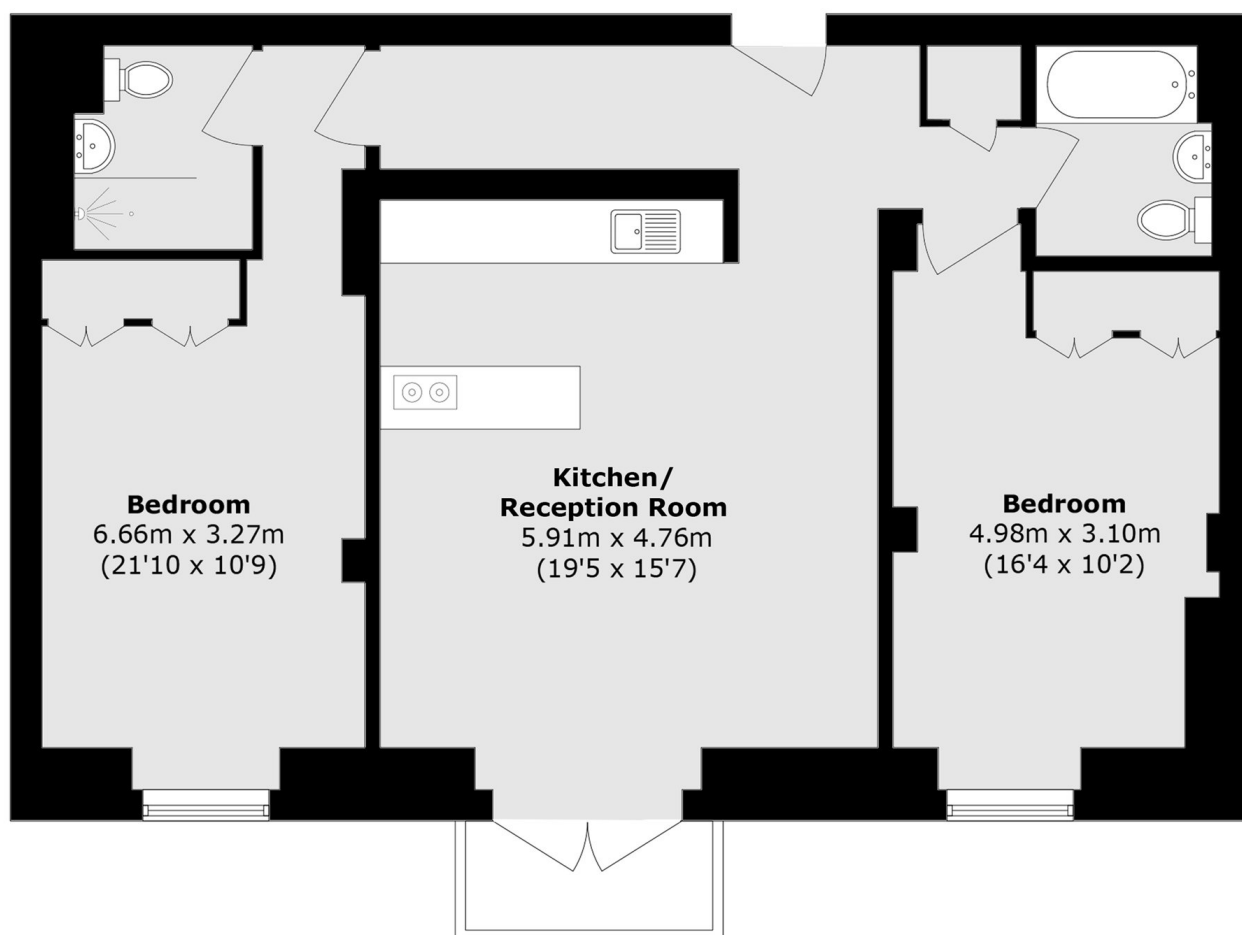
Located in the heart of Shad Thames, this immaculately presented two double bedroom warehouse apartment boasts stunning period features, exposed brick work, ample living space, lots of storage and a private balcony overlooking the historic St. Saviours Dock.

St Saviours Wharf is enviably located, with a plethora of riverside restaurants, independent cafés, and artisan delis on your doorstep, along with Tower Bridge, the City, Borough Market, Bermondsey Street, and Maltby Street Market.

Features

- Two Double Bedrooms
- Two Bathrooms
- Excellent Condition
- Private Balcony
- Secure Parking
- Concierge Facilities

Shad Thames, London, SE1



Total area (approx.): 79.2 sq. m (852.5 sq. ft)