



1 Albert Embankment, SE1 | £3,500 Per Month



TUCKERMAN
ESTATE AGENTS
PROPERTY PROFESSIONALS

Albert Embankment, SE1

A spacious two double bedroom apartment situated on the fourth floor of this modern development overlooking the River Thames.

This superb apartment not only boasts some of London's premium views but also delivers a spacious reception, a smart modern kitchen, two bathrooms, floor to ceiling windows, wooden floors and offers a residents only gymnasium and 24 hour security.

Parliament view is located in an imposing and iconic development which is adjacent to Lambeth Palace and just a short walk to Millbank, Parliament Square & both Westminster & Vauxhall Underground stations.

Band G - Lambeth Council
EPC Rating - B





Albert Embankment, SE1

Available

Per Month: £3,500 Per Month

Furnishing: Furnished


Available From: 1st July 2026

Local Authority: London Borough of Lambeth

Council Tax Band: G

Approximate Gross Internal Area: 819.00 sq ft

Energy Efficiency Rating

	Current	Potential
<i>Very energy efficient - lower running costs</i>		
(92 plus) A		
(81-91) B	81	83
(69-80) C		
(55-68) D		
(39-54) E		
(21-38) F		
(1-20) G		
<i>Not energy efficient - higher running costs</i>		
England & Wales	EU Directive 2002/91/EC	

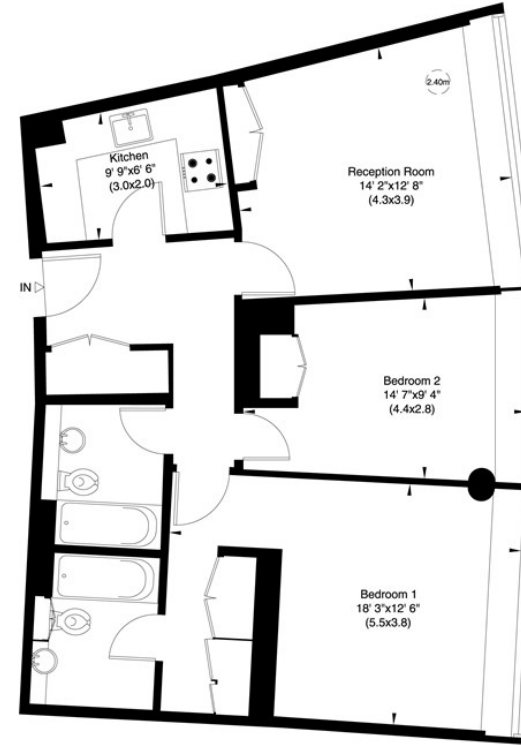
Parliament View, Albert Embankment, SE1

Gross internal area (approx.)
76 Sq m (819 Sq ft)

For identification only, Not to Scale



Floor Plan by **capital group** 020 8671 7722



Fourth Floor

Not to scale, for guidance only and must not be relied upon as a statement of fact. All measurements and areas are approximate only (and have been prepared in accordance with the current edition of the RICS Code of Measuring Practice).

Agents Note: Whilst every care has been taken to prepare these sales particulars, they are for guidance purposes only. All measurements are approximate and are for general guidance purposes only and whilst every care has been taken to ensure their accuracy, they should not be relied upon and potential buyers are advised to recheck the measurements.

020 7222 5510

info@tuckermanresidential.co.uk
52 Moreton Street, London, SW1V 2PB
www.tuckermanresidential.co.uk