

estate agents **auctioneers**



573 Electricity House Colston Avenue, Bristol, BS1 4TB

£625,000

An impressive and rare to the market 1200 sq ft 3 bedroom duplex with impressive views over an historic part of Bristol.

- Duplex Apartment
- Allocated parking
- Concierge services
- Stunning views
- Central location
- Panoramic windows
- Accommodation set over two levels

The Property

Located within the iconic Electricity House in the heart of Bristol, this exceptional three-bedroom duplex apartment combines contemporary style and characterful Art Deco design.

Arranged over two beautifully designed levels, the property offers a spacious and versatile layout, ideal for modern city living. The upper floor is dedicated to an impressive open-plan living, dining, and kitchen area. Expansive windows span the full length of the room, flooding the space with natural light and a large sliding door creates a seamless indoor-outdoor feel, perfect for entertaining or relaxing with an amazing view across Bristol.

The stylish, contemporary kitchen is fitted with high-quality integrated appliances and stylish cabinetry, with a large island providing ample countertop space and room for additional seating. The lower floor hosts three well-proportioned bedrooms, providing comfortable and private accommodation. The principal bedroom benefits from a modern ensuite shower room and built-in wardrobes, a feature the third bedroom shares. A spacious family bathroom with a full-sized bath completes this level.

The property benefits from underfloor heating and air-conditioning throughout, as well as an allocated parking space and concierge services.

Location - City Centre

The Centre is the heart of the City with constant action on offer from the Hippodrome and Colston Hall, Bristol Shopping Quarter at Cabot's Circus to the characterful Christmas Steps, Corn Street and St Nicholas Market. Nearby Millennium Square acts as a gateway to the neighbouring harbourside with its fountains and big screen as well as world class attractions such as Brunel's SS Great Britain, We The Curious, Bristol Aquarium, the Arnolfini, Spike Island, the Watershed and the M Shed.

Other Information

Leasehold: 125 years from 1 January 2015

Ground rent: £300 PA

Management Fee: circa £458 pcm

Council Tax Band: E

Please Note

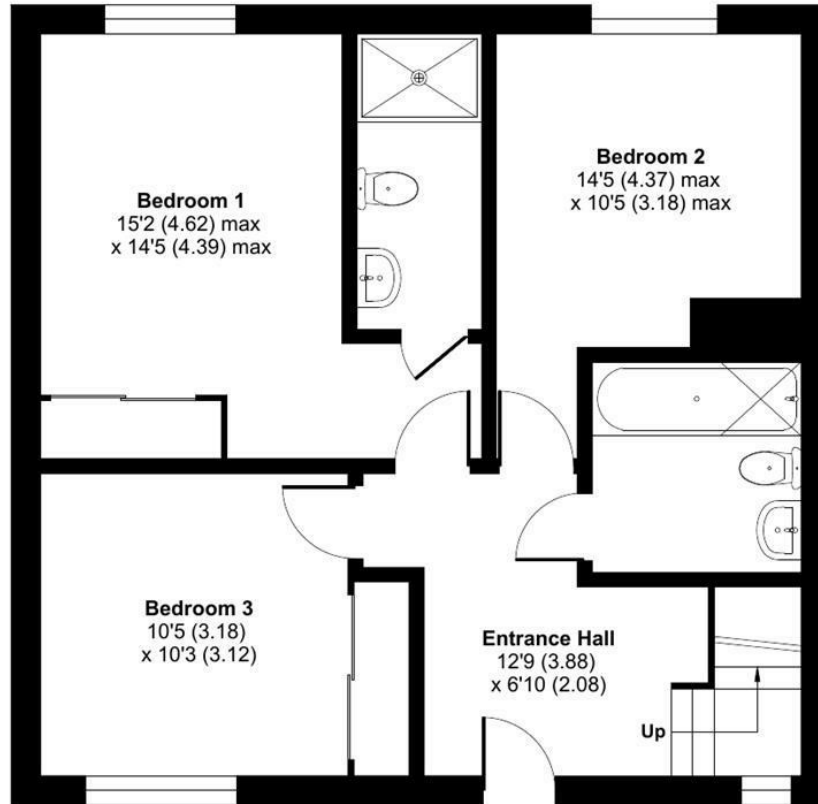
Hollis Morgan endeavour to make our sales details clear, accurate and reliable in line with the Consumer Protection from Unfair Trading Regulations 2008 but they should not be relied on as statements or representations of fact and they do not constitute any part of an offer or contract. All Hollis Morgan references to planning, tenants, boundaries, potential development, tenure etc is to be superseded by the information provided in your solicitors enquiries. It should not be assumed that this property has all the necessary Planning, Building Regulation or other consents. Any services, appliances and heating system(s) listed may not been checked or tested and you should rely on your own investigations. The seller does not make any representation or give any warranty in relation to the property and we have no authority to do so on behalf of the seller. Please note that in some instances the photographs may have been taken using a wide angle lens.



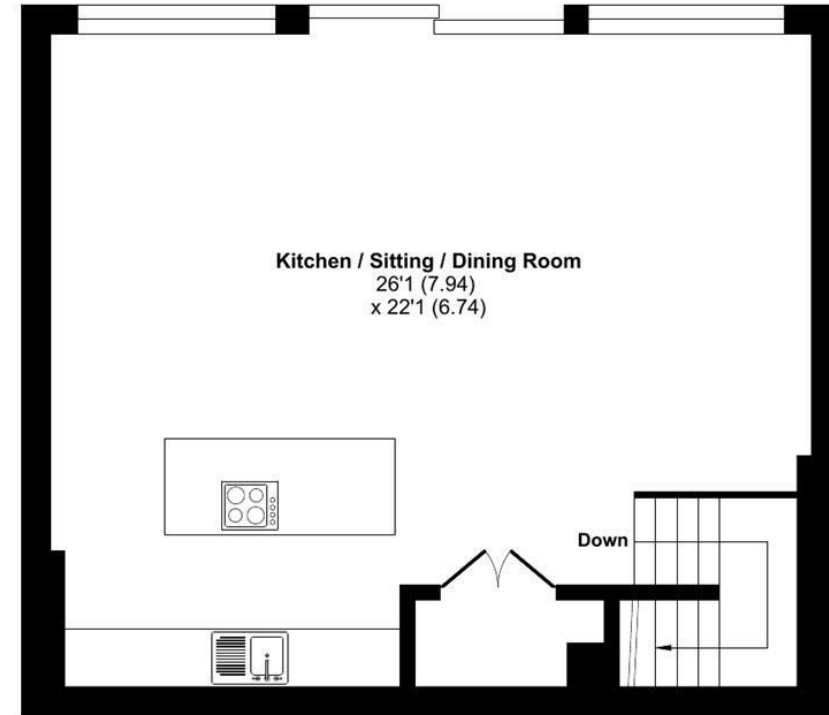
Colston Avenue, Bristol, BS1

Approximate Area = 1218 sq ft / 113.1 sq m

For identification only - Not to scale



FIFTH FLOOR



SIXTH FLOOR



Floor plan produced in accordance with RICS Property Measurement 2nd Edition, Incorporating International Property Measurement Standards (IPMS2 Residential). © ntechcom 2026. Produced for Hollis Morgan. REF: 1446309



TEL | 0117 933 9522 | 9 Waterloo Street, Clifton, Bristol BS8 4BT

www.hollismorgan.co.uk | post@hollismorgan.co.uk

Hollis Morgan Property Limited, registered in England, registered no 7275716
Registered address, 5 Upper Belgrave Road, Clifton, Bristol BS8 2XQ

hollis
morgan
