



## 6 Whinfield Drive, Keighley

Asking Price £130,000

# 6 Whinfield Drive

Keighley

Priced at £130,000 with a tenant in situ, this four-bedroom semi-detached property generates £730 pcm to offer an impressive 6.7% gross yield from day one. While the interior requires modernisation throughout, it provides a fantastic opportunity for investors looking to add long-term value to a spacious rental asset.

Council Tax band: A

Tenure: Freehold

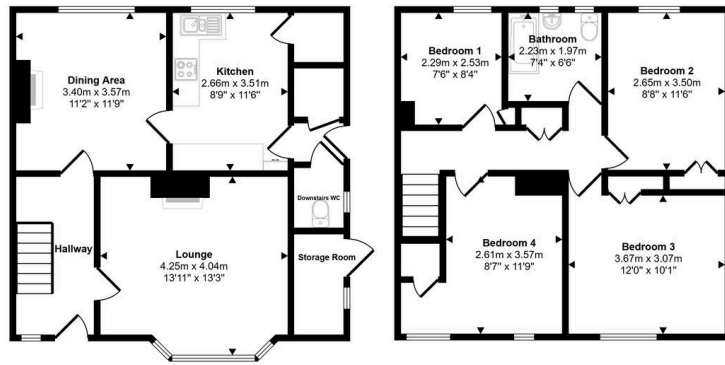
EPC Energy Efficiency Rating: D

EPC Environmental Impact Rating: D

- Calling Investors
- 6.7% Rental Yield
- Four Large Bedrooms
- Newly Installed Bathroom
- Chain Free Sale
- Over 100m2 House



Approx Gross Internal Area  
109 sq m / 1176 sq ft



Ground Floor  
Approx 56 sq m / 599 sq ft

First Floor  
Approx 54 sq m / 578 sq ft

Whilst every attempt has been made to ensure the accuracy of the floor plan contained here, measurements of doors, windows, rooms and any other items are approximate and no responsibility is taken for any error, omission, or mis-statement. The measurements should not be relied upon for valuation, transaction and/or funding purposes. This plan is for illustrative purposes only and should be used as such by any prospective purchaser or tenant.





## Aspire Estates

Aspire Properties, Wira Business Park Ring Road - LS16 6EB

0113 8875079

[estatesales@aspirepropertygroup.co.uk](mailto:estatesales@aspirepropertygroup.co.uk)

[www.aspirepropertygroup.co.uk/](http://www.aspirepropertygroup.co.uk/)