



Linden Close

Thames Ditton, KT7 0DG

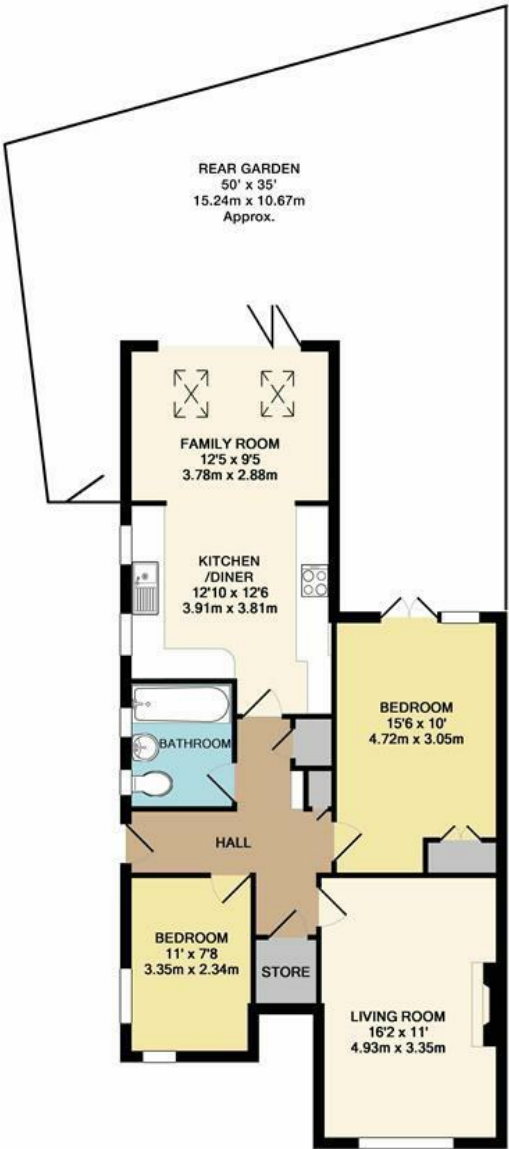
£565,000

Tucked away, in the centre of the village, is this beautifully presented, 2 double bedroom ground floor property. Featuring a beautifully extended open plan kitchen-dining room with family room, which opens via bi-folding doors to a private west-facing garden. There is also a spacious living room to front with feature fireplace and a modern family bathroom. Sold with no onward chain.

- Central village location
- Superb open plan kitchen/dining room
- 2 good sized double rooms
- Storage cupboards
- Ground floor
- Bi-folding doors to West facing garden
- Large front reception room
- No onward chain

Floor Plan

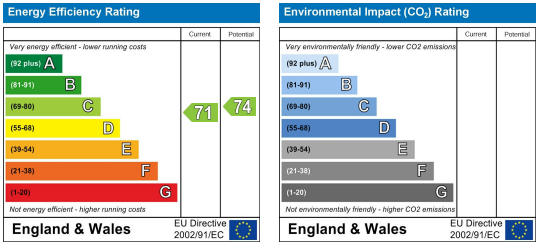
LINDEN CLOSE, THAMES DITTON
INTERNAL FLOOR AREA (APPROX.)
850 sq ft/ 78.97 sq m



GROUND FLOOR MAISONETTE

Whilst every attempt has been made to ensure the accuracy of this floor plan, measurement of doors, windows, rooms and any other items are approximate and no responsibility is taken for any error, omission or mis-statement. Made with Metropix © 2018.

Energy Efficiency Graph



These particulars, whilst believed to be accurate are set out as a general outline only for guidance and do not constitute any part of an offer or contract. Intending purchasers should not rely on them as statements of representation of fact, but must satisfy themselves by inspection or otherwise as to their accuracy. No person in this firms employment has the authority to make or give any representation or warranty in respect of the property.