



Jillian Close, TW12

£750,000

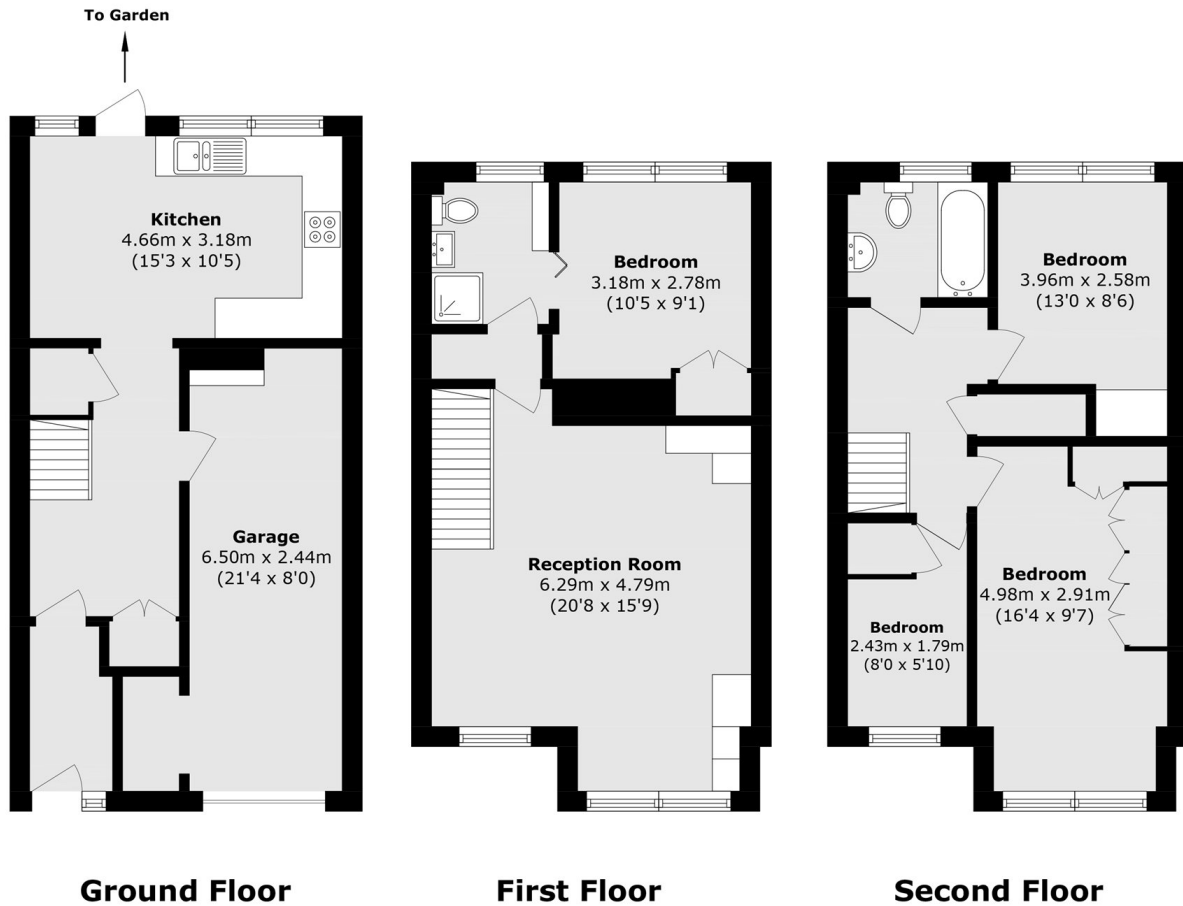
Well presented, four bedroom townhouse, offering close to 1400 sq ft of versatile living space including an integral garage. The property features a spacious reception room, modern fitted kitchen with direct access to a private rear garden.

Jillian Close, a quiet cul-de-sac off Chestnut Avenue and located in the heart of Hampton Village, this popular location is moments from the train station, local shops and cafés and a short walk to Hampton Infants and Juniors.

Features

- Four Bedrooms
- Townhouse
- Garage
- Off Street Parking
- No Onward Chain
- Private Garden

Jillian Close, Hampton, TW12



Total area (approx.): 128.8 sq. m (1386.4 sq. ft)
(Including Garage)