



Stourcliffe Close
Stourcliffe Street, W1H

CHESTERTONS





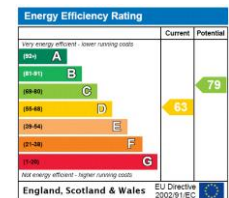
A well-presented three bedroom apartment extending to approximately 1,038 sq ft, set on the first floor of a purpose built building with lift and porter. The property offers well-proportioned rooms throughout and is presented in very good decorative order.

The apartment comprises a spacious reception and dining room, a separate kitchen, three bedrooms and two bathrooms, together with good storage. The layout is both practical and well balanced, making it suitable for owner occupiers or those seeking a London base.

Stourcliffe Close is located within the Hyde Park Estate, ideally positioned for the open spaces of Hyde Park and the amenities of Connaught Village, with Marble Arch, Edgware Road and Paddington all within easy reach.

- First floor apartment
- 1038 sq.f.
- 3 double bedrooms
- Newly refurbished
- Lift
- Porter
- Close to Connaught Village
- Good decoration
- Close to Marble Arch, Edgware Road and Paddington, with excellent transport links

Asking Price £900,000



Tenure: Leasehold 89 years (19/03/2115)
Service Charge: £10311.85 including reserve fund contributions
Ground Rent: £0
Local Authority: City of Westminster
Council Tax Band: F

Chestertons Hyde Park & Marylebone Sales

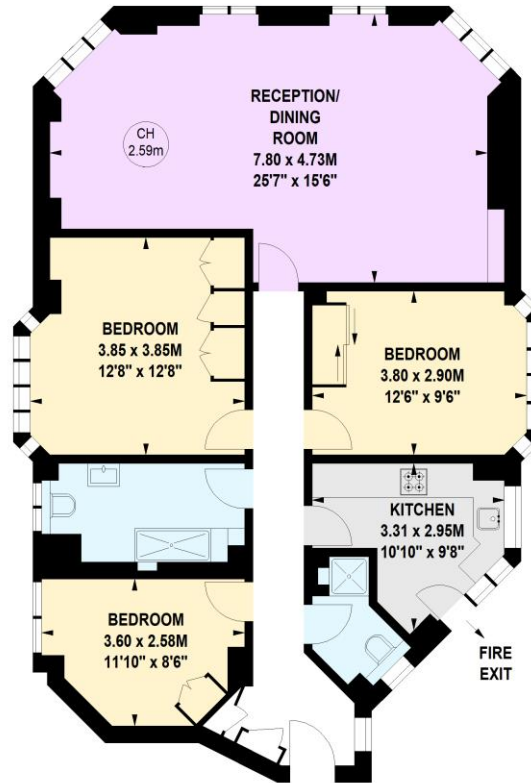
40 Connaught Street
 London
 W2 2AB
 hydepark@chestertons.co.uk
 020 7298 5900
 chestertons.co.uk

Stourcliffe Close, W1H

Approximate gross internal area

96.43 sq m / 1038 sq ft

Key :
CH - Ceiling Height



First Floor

Not to scale, for guidance only and must not be relied upon as a statement of fact.
All measurements and areas are approximate only

Chesterton UK Services Limited trading as Chestertons for themselves and for the vendor of this property whose agents they are, give notice that (i) these particulars do not constitute any part of an offer or contract, (ii) all statements contained within these particulars are made without responsibility on the part of Chestertons or the vendor, (iii) whilst made in good faith, none of the statements contained within these particulars are to be relied upon as a statement or representation of fact, (iv) any intending purchasers must satisfy themselves by inspection or otherwise as to the correctness of each of the statements contained within these particulars, (v) the vendor does not make or give either Chestertons or any person in their employment any authority to make or give representation or warranty whatsoever in relation to this property. Wide angle lenses may be used. ©Copyright Chestertons | Chesterton UK Services Limited | Registered Office 40 Connaught Street, Hyde Park, London W2 2AB Registered Company Number 05334580.



This paper is
100% recyclable