



Guide Price
£290,000

Freehold

3x  2x  2x 

**Selkirk Road, Dover,
Kent, CT16**

OVER 60?

Secure this property
for up to **59% less!**

Wards
Helping you move forwards



Main features

- Plenty of driveway parking, ideal with guests descend
- Plenty of living space
- Stylish kitchen/breakfast room, perfect for family meals and entertaining
- Large garden with a well kept lawn
- Close to shops as well as a selection of schools

Accommodation

GROUND FLOOR

Entrance Porch
 Entrance Hallway
 Dining Room : 12'5 x 11'1 (3.79m x 3.38m)
 Lounge : 13'7 x 10'4 (4.14m x 3.15m)
 Kitchen/Breakfast Room : 14'8 x 10'5 (4.47m x 3.18m)
 Utility Area : 7'2 x 3'4 (2.19m x 1.02m)
 Downstairs Bathroom : 7'6 x 5'7 (2.29m x 1.70m)

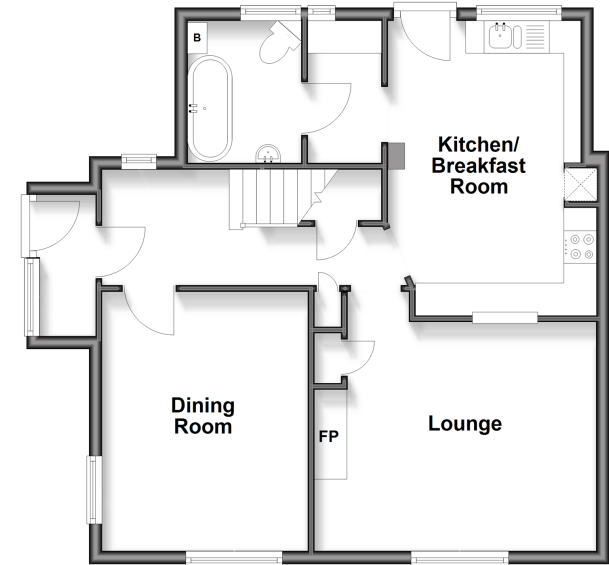
FIRST FLOOR

Landing
 Shower Room : 7'3 x 6'2 (2.21m x 1.88m)
 Bedroom 1 : 12'5 x 11'4 (3.79m x 3.46m)
 Bedroom 2 : 11'9 x 11'6 (3.58m x 3.51m)
 Bedroom 3 : 8'9 x 7'4 (2.67m x 2.24m)

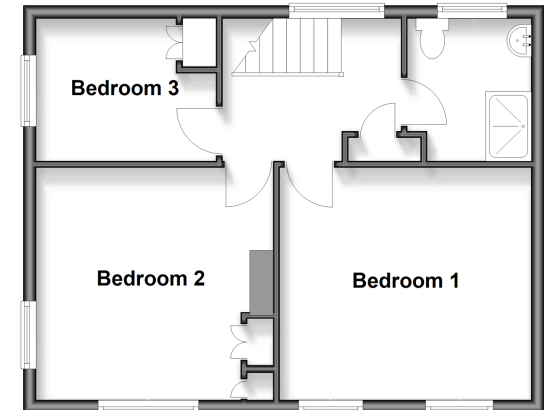
OUTSIDE

Front Garden
 Rear Garden
 Plenty Of Off Road Parking
 Shed
 Log Store

Ground Floor
 Approx. 60.3 sq. metres (648.8 sq. feet)



First Floor
 Approx. 44.4 sq. metres (478.1 sq. feet)



Call Dover - 01304 214876 ■ wardsof Kent.co.uk

- Legal advice should be taken to verify fixtures/fittings, planning, alterations and/or lease details
- Appliances & services are untested, dimensions are approximate and floor plans are not to scale
- Through a Homewise Home For Life Plan people aged 60+ can secure this property for up to 50% less, by purchasing a Lifetime Lease.



10736174/20250908/TE/OV