

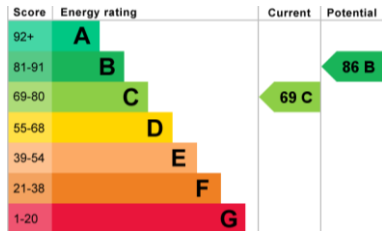


STRATTON MAIN ROAD ORPINGTON  
BR5 3HE  
PRICE: £485,000 | Freehold



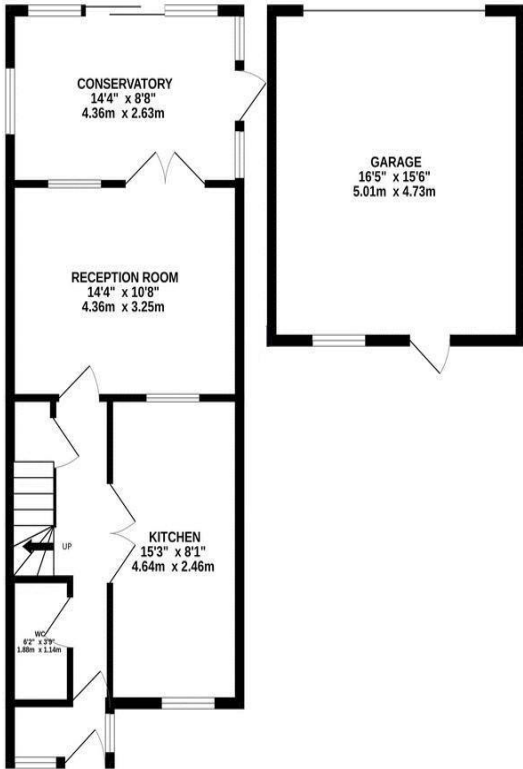
Attractive and conveniently located three bedroom semi-detached home. This modern and well-maintained three bedroom semi-detached house enjoys a prime position close to St Marys Cray mainline station, a selection of sought-after local schools and an array of shops, making it ideal for families and commuters alike. Presented in excellent condition by the current owner, the property offers generous living accommodation comprising an inviting entrance hall, ground floor W.C., a stylishly fitted kitchen/diner, a comfortable reception room and a bright conservatory providing additional flexible living space. Upstairs, you will find three well-proportioned bedrooms and a contemporary family bathroom. Externally, the home benefits from a double garage to the rear with ample parking, a well-established front garden and a private rear garden offering a secluded retreat. Additional features include double glazing and gas central heating. Viewing is highly recommended to fully appreciate all this property has to offer.

Local Authority: Bromley  
Council Tax Band: D

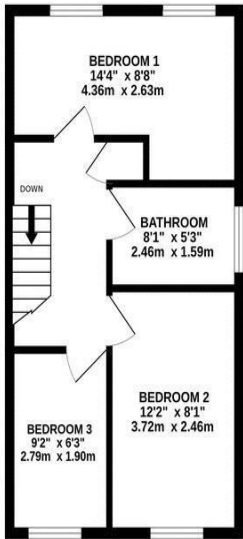


60-62 High Street, Bexley, Kent DA5 1AH  
bexley@parkestates.co.uk  
www.parkestates.co.uk

GROUND FLOOR  
767 sq.ft. (71.3 sq.m.) approx.



1ST FLOOR  
373 sq.ft. (34.6 sq.m.) approx.



TOTAL FLOOR AREA: 1140 sq.ft. (105.9 sq.m.) approx.

Whilst every attempt has been made to ensure the accuracy of the floorplan contained here, measurements of doors, windows, rooms and any other items are approximate and no responsibility is taken for any error, omission or mis-statement. This plan is for illustrative purposes only and should be used as such by any prospective purchaser. The services, systems and appliances shown have not been tested and no guarantee as to their operability or efficiency can be given.  
Made with Metropix ©2025

Every care has been taken with the preparation of details, but accuracy is in no way guaranteed. These particulars do not constitute a contract and are issued and accepted on the express understanding that all negotiations will be conducted through Park Estates. The seller does not make or give, nor do we or our employees have any authority to give a representation or warranty in relation to the property. Please contact this office before viewing the property. If there is any point which is of particular importance to you, we will be pleased to check the information for you and confirm that the property remains available. This is particularly important if you are contemplating travelling some distance to view the property. We would strongly recommend that all the information that we provide about the property is verified by yourself on inspection and also by your conveyancer, especially where statements have been made by us to the effect that the information provided by us has not been verified.