



The Tobacco Factory
Phase Three
2 Naples Street
M4 6DN

CWS
TOBACCO

CWS
FACTORY



Apt 20 Tobacco Factory, 3 Naples Street, Manchester, M4 4DH

A lovely one bedroom Apartment located at Tobacco Factory III, a popular building located at Angel Meadows, a short walk to Victoria Station and Manchester City Centre. The apartment is located on the second floor and the development benefits from large windows and high ceilings giving a loft apartment feel.

The apartment has laminate flooring throughout. Internally the layout comprises- entrance hallway leading to open plan living space, with kitchen off, with recently installed oven. There is a large double bedroom, and good sized bathroom with bath and shower over. No Parking. Council Tax Band C. EPC Rating B. EWS-1 is underway and Mortgage Buyers are Welcome

Offers Over £120,000

Viewing arrangements

Viewing strictly by appointment through the agent
245 Deansgate, Manchester, M3 4EN 0161 833 9499 opt 3

Entrance Hall

Laminate flooring, deep cupboard housing hot water system and plumbed for a washing machine

Living/Dining Room

19'4" x 16'0"

The L-Shaped room has two double glazed windows and electric heaters. Laminate flooring. Open to-

Kitchen

7'10" x 7'5"

Wall and base units with one and a half bowl sink unit, fridge/freezer, dishwasher, oven, hob and extractor hood.

Bedroom

11'3" x 8'8"

Two double glazed windows, laminate flooring and electric heater.

Bathroom

8'11" x 5'6"

Three piece suite with shower attachment over the bath, wash hand basin and w.c. Part tiled walls, laminate flooring and heated towel rail.

Additional Information

Service Charge £3000 pa TBC

Lease 999 years from 2002

Ground Rent £100 pa

Building Managed By Complete Property Management Solutions

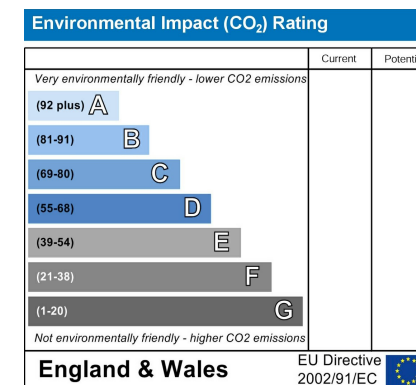
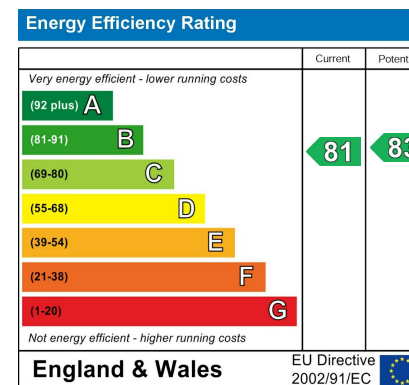
EWS-1 works are due to be completed by October 2026.

Agents Note

To be able to purchase a property in the United Kingdom all agents have a legal requirement to conduct Identity checks on all customers involved in the transaction to fulfil their obligations under Anti Money Laundering regulations. We outsource this check to a third party and a charge will apply. Ask the branch for further details.

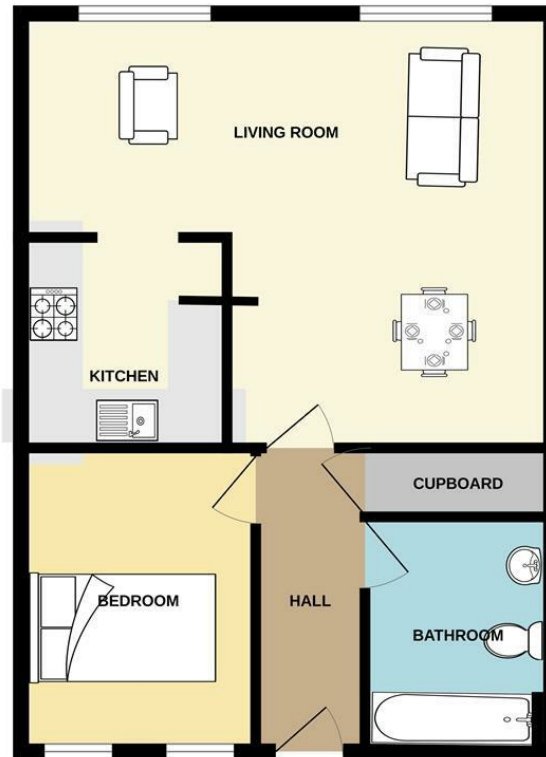
Disclaimer

IMPORTANT NOTE TO PURCHASERS: The lease, ground rent and service charges should all be checked via the solicitors for clarification. We endeavour to make our sales particulars accurate and reliable, however, they do not constitute or form part of an offer or any contract and none is to be relied upon as statements of representation or fact. The services, systems and appliances listed in this specification have not been tested by us and no guarantee as to their operating ability or efficiency is given. All measurements have been taken as guide to prospective buyers only, and are not precise. If floor plans were included, these may not be to scale and accuracy is not guaranteed. If you require clarification or further information on any points, please contact us.





GROUND FLOOR



Measurements are approximate. Not to scale. Illustrative purposes only.
Made with Metropix ©2025



These particulars are believed to be accurate but they are not guaranteed and do not form a contract. Neither Jordan Fishwick nor the vendor or lessor accept any responsibility in respect of these particulars, which are not intended to be statements or representations of fact and any intending purchaser or lessee must satisfy himself by inspection or otherwise as to the correctness of each of the statements contained in these particulars. Any floorplans on this brochure are for illustrative purposes only and are not necessarily to scale.

Offices at: Chorlton, Didsbury, Disley, Hale, Glossop, Macclesfield, Manchester Deansgate, Manchester Whitworth Street, New Mills, Sale, Wilmslow and Withington

245 Deansgate, Manchester, M3 4EN

0161 833 9499 opt 3

manchester@jordanfishwick.co.uk

www.jordanfishwick.co.uk

