



MEAD PROPERTY



Rambler Cottage, Bracken Road, SL6 3EF

Asking Price: £695,000

Ranmbler cottage, Bracken Road, Maidenhead

An attractive and very well-presented detached period cottage in a quiet residential road on the south westerly outskirts of Maidenhead with nearby shops, good schools and easy access to the M4. The property benefits from delightful mature gardens of a generous size providing potential for extension STPP and has a large, gated driveway and detached double garage. Local schools are highly regarded, and transport links are excellent. There is a mainline station into London Paddington (fast train 20 minutes) and the Elizabeth Line provides a direct link to the City. Both M4 and M40 are close by with Heathrow airport 30 minutes away. EPC Rating: D Council Tax Band: E £695,000 FREEHOLD

Accommodation & Amenities

ENTRANCE HALL

SITTING ROOM

DINING ROOM

KITCHEN

UTILITY ROOM

CLOAKROOM

First floor

PRINCIPAL BEDROOM

TWO FURTHER BEDROOMS

FAMILY BATHROOM

Outside

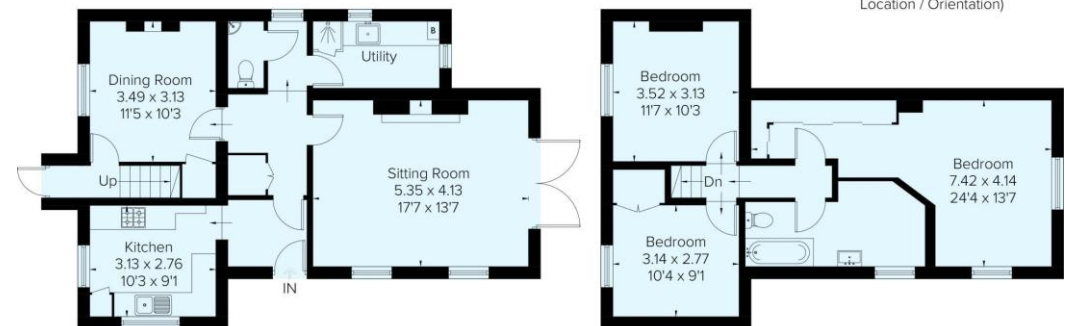
GOOD SIZED MATURE GARDEN

DETACHED DOUBLE GARAGE

Approximate Area = 122.1 sq m / 1314 sq ft
Garage = 32.4 sq m / 349 sq ft
Total = 154.5 sq m / 1663 sq ft



(Not Shown In Actual Location / Orientation)



Ground Floor

First Floor

Surveyed and drawn in accordance with the International Property Measurement Standards (IPMS 2: Residential)
fourwalls-group.com 257689



