



Guide Price

£850,000

Freehold

4x  1x  3x 

**Curlew Crescent,
Basildon, Essex, SS16**

OVER 60?

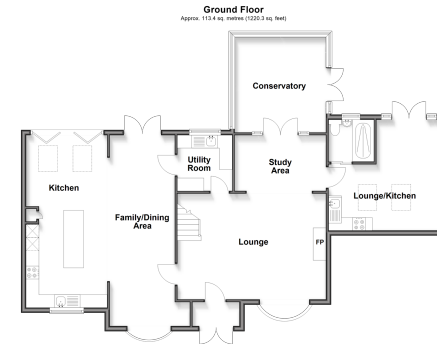
Secure this property
for up to **59% less!**

 **DOUGLAS
ALLEN**
Helping you move forwards



Main features

- Close to local amenities and transport links
- In catchment area for local desirable schools
- Close proximity to station
- Situated in a popular residential area
- Loft extension with a balcony



Accommodation

GROUND FLOOR

- Entrance Hallway
- Kitchen/Family/Dining Area: 24'3 x 19'8 (7.40m x 6.00m)
- Lounge: 21'8 x 17'8 (6.61m x 5.39m)
- Utility Room : 7'9 x 6'6 (2.36m x 1.98m)
- Study Area: 12'0 x 7'9 (3.66m x 2.36m)
- Conservatory: 12'4 x 12'0 (3.76m x 3.66m)
- Lounge/Kitchen: 14'4 x 13'9 (4.37m x 4.19m)

FIRST FLOOR

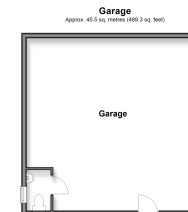
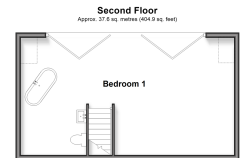
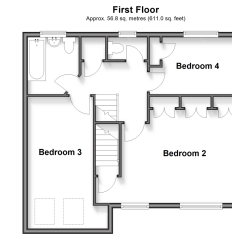
- Landing
- Bedroom 2: 12'2 x 7'3 (3.71m x 2.21m)
- Bedroom 3: 18'6 x 11'3 (5.64m x 3.43m)
- Bedroom 4: 24'9 x 13'3 (7.55m x 4.04m)
- Bathroom
- WC

SECOND FLOOR

- Landing
- Bedroom 1: 16'6 x 8'3 (5.03m x 2.52m)

OUTSIDE

- Rear Garden
- Driveway Parking
- Garage



Call Basildon - 01268 293993 ■ douglasallen.co.uk

- A private rental licensing scheme applies to some properties in this area, please check with the Local Authority before proceeding
- Legal advice should be taken to verify fixtures/fittings, planning, alterations and/or lease details
- Appliances & services are untested, dimensions are approximate and floor plans are not to scale
- Through a Homewise Home For Life Plan people aged 60+ can secure this property for up to 59% less, by purchasing a Lifetime Lease



50508120/20260219/MB/AA