



29 Pinckneys Way, Durrington Salisbury SP4 8BT

welcome to

Pinckneys Way, Durrington Salisbury

This property in Pinckneys Way in Durrington is a three bedroom family home set within a quiet residential area on the edge of Salisbury Plain. Built in a contemporary style, the house features a balanced layout typical of the area.



Lounge

22' 5" 6 x 8' 7" 3 (6.83m 6 x 2.62m 3)
Carpet, Dual Aspect Double Glazed Windows

Dining Room

13' 9" 5 x 10' 6" 0 (4.19m 5 x 3.20m 0)
Carpet, Front Aspect Double Glazed Windows

Reception Room

9' 3" 0 x 8' 8" 8 (2.82m 0 x 2.64m 8)
Carpet, Boiler, Rear Aspect Double Glazed Windows

Kitchen

13' 9" 1 x 8' 5" 6 (4.19m 1 x 2.57m 6)
Tiled Flooring, Electric Range Cooker, Space for
Dishwasher, Washing Machine and Tumble Drier,
Under Stair Storage

Conservatory

8' 5" 2 x 13' 2" 7 (2.57m 2 x 4.01m 7)
Tiled Flooring

Landing

Carpet, Hatch to Attic

Bedroom 1

21' 9" 9 x 13' 2" 2 (6.63m 9 x 4.01m 2)
Carpet, Built-In Wardrobe, Radiator, Front Aspect
Double Glazed Windows

Bedroom 1 Ensuite

Shower, Bath, W/C, Sink, Heated Towel Rail, Rear
Aspect Double Glazed Windows

Bedroom 2

10' 6" 9 x 10' 2" 9 (3.20m 9 x 3.10m 9)
Carpet, Radiator, Built-In Wardrobe, Front Aspect
Double Glazed Windows

Bedroom 3

7' 7" 2 x 8' 7" 1 (2.31m 2 x 2.62m 1)
Carpet, Radiator, Rear Aspect Double Glazed
Windows

Bathroom

Tiled Flooring, Bath, Shower, Sink, W/C, Radiator,
Rear Aspect Double Glazed Windows

Downstairs W/C

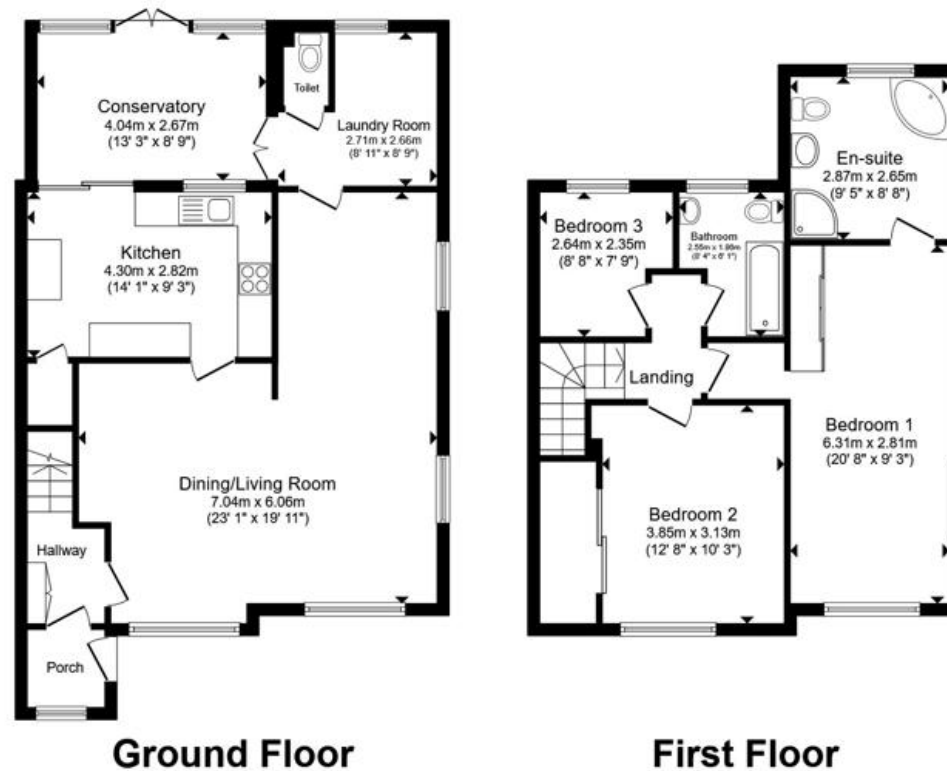
Tiled Flooring, W/C, Rear Aspect Double Glazed
Windows

Front Garden

Driveway, Lawn

Rear Garden

Lawn, Decking, New Shed, Tiled Area, Side Access



Total floor area 135.1 m² (1,454 sq.ft.) approx

This floor plan is for illustrative purposes only. It is not drawn to scale. Any measurements, floor areas (including any total floor area), openings and orientation are approximate. No details are guaranteed, they cannot be relied upon for any purpose and they do not form part of any agreement. No liability is taken for any error, omission or misstatement. A party must rely upon its own inspection(s). Powered by www.propertybox.io



view this property online fox-and-sons.co.uk/Property/AME105784



welcome to

Awaiting Photograph

Pinckneys Way, Durrington Salisbury

- Three Bedroom Semi Detached Family Home
- Bathroom, Ensuite and Downstairs W/C
- Decking Area and New Shed in the Private Rear Garden
- Sought After Area of Durrington
- Close to Local Amenities and Schools

Tenure: Freehold EPC Rating: C

Council Tax Band: D

£345,000



Please note the marker reflects the postcode not the actual property

view this property online fox-and-sons.co.uk/Property/AME105784



Property Ref:
AME105784 - 0007

1. MONEY LAUNDERING REGULATIONS Intending purchasers will be asked to produce identification documentation at a later stage and we would ask for your co-operation in order that there is no delay in agreeing the sale. 2. These particulars do not constitute part or all of an offer or contract. 3. The measurements indicated are supplied for guidance only and as such must be considered incorrect. Potential buyers are advised to recheck measurements before committing to any expense. 4. We have not tested any apparatus, equipment, fixtures or services and it is in the buyers interest to check the working condition of any appliances. 5. Where an EPC, or a Home Report (Scotland only) is held for this property, it is available for inspection at the branch by appointment. If you require a printed version of a Home Report, you will need to pay a reasonable production charge reflecting printing and other costs. 6. We are not able to offer an opinion either written or verbal on the content of these reports and this must be obtained from your legal representative. 7. Whilst we take care in preparing these reports, a buyer should ensure that his/her legal representative confirms as soon as possible all matters relating to title including the extent and boundaries of the property and other important matters before exchange of contracts.


fox & sons



01980 624155



Amesbury@fox-and-sons.co.uk



49 Salisbury Street, AMESBURY, Wiltshire, SP4 7AW



fox-and-sons.co.uk