

Property ref: 167492

London Road, Reading, RG1 5AG

£1,350 PCM

HASLAM'S
Lettings



A beautifully converted one bedroom apartment, boasting period features including a vaulted ceiling, original fireplaces and floor to ceiling sash windows. The property is located on the outskirts of Reading town centre, within walking distance of the Oracle shopping centre, local amenities and bus routes. Reading Borough Council tax band C.

Broadband/Mobile Info: Connections available. For an indication of specific speeds and supply of Broadband and Mobile, we advise applicants go to the Ofcom website Broadband and Mobile Coverage Checker.

Available 24/08/2026

*Fees For Assured Periodic Tenancies: when you rent a property from us you will be required to pay a sum equivalent to one weeks' rent for a holding deposit. Upon successful application, this amount will be off set against your first months' rent. You will also be required to pay a security deposit equivalent to 5 weeks' rent which will be held and protected in line with Deposit legislation. For more information about our fees please visit: www.haslams.net
Fees for all other tenancies (Non Housing Act Tenancies / Company Lets): when you rent a property from us we will charge you a one-off fee per property. This charge is the equivalent of 15 days of the monthly rental charge (+VAT) with a minimum fee of £450 (inc.VAT) up to a maximum of £650 (inc.VAT). Other fees may apply depending on your circumstances.

- One double bedroom
- Bathroom with shower over the bath
- Expansive, open-plan living area
- Close to Reading town centre and mainline station
- Allocated parking; EPC rating D; Electric heating
- Furnished; Managed by HASLAM'S

0118 960 1055

lettings@haslams.net www.haslams.net

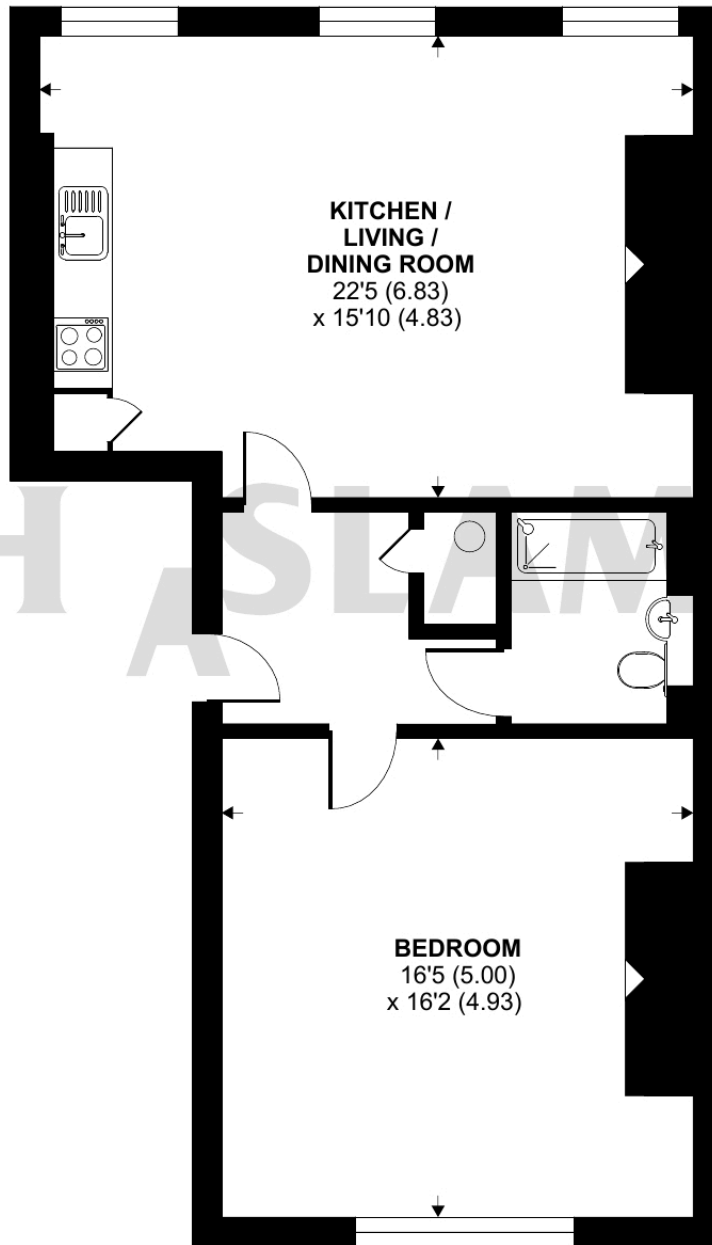
Haslams Estate Agents Ltd, 159 Friar Street, Reading, Berkshire, RG1 1HE



London Road, Reading, RG1

Approximate Area = 743 sq ft / 69 sq m

For identification only - Not to scale



GROUND FLOOR



Floor plan produced in accordance with RICS Property Measurement 2nd Edition, Incorporating International Property Measurement Standards (IPMS2 Residential). © nchecon 2025. Produced for Haslamss. REF: 1311815