



CARVERS

SALES & LETTINGS

Glaisdale Court

Darlington, DL3 7AE

Price £90,000

Apartment



Welcome to the highly desirable Glaisdale Court, Darlington. The property features a spacious open plan reception room, a well-appointed bedroom, and a modern bathroom, making it an ideal choice for a young professional or an astute investor seeking a low-maintenance 'set and forget' addition to their portfolio.

The apartment boasts a superb location, just a short stroll from the town center, where you can enjoy a variety of amenities including restaurants, bars, and shops. Additionally, the picturesque Stanhope Park is conveniently located just around the corner, providing a perfect spot for leisurely walks or outdoor activities.

For your convenience, the property includes an allocated parking space at the front, ensuring that you have a secure place for your vehicle. This apartment not only offers comfort and practicality but also the advantage of being in a vibrant community with everything you need within easy reach.

Whether you are looking to settle into a new home or seeking a reliable investment opportunity, this apartment at Glaisdale Court is sure to meet your needs. Don't miss the chance to make this lovely property your own.



- Desirable Town center location
- Allocated parking to front
- Would suit young professional or 'set and forget' investment property
- Open plan living
- Close to all town center amenities, a short walk away

GENERAL INFORMATION:

Tenure: Leasehold. 105 years remaining

Services: Electric central heating, mains electric, water and drainage.

Double glazing

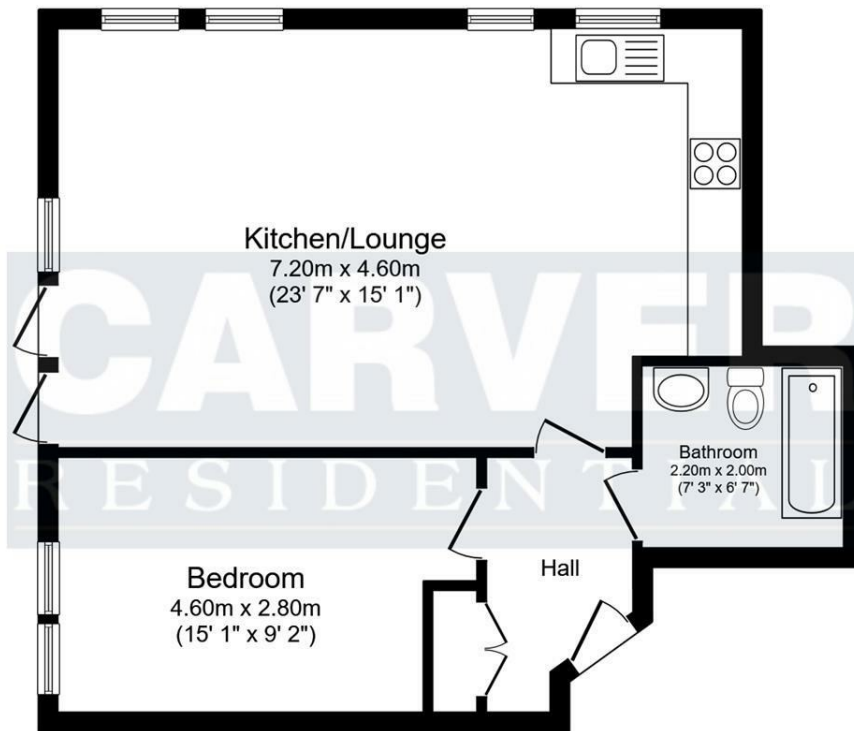
Local Authority: Darlington Borough Council (Tax Banding B)

Ground rent £500 per annum

Buyers Identification Checks

Should a purchaser(s) have an offer accepted on a property marketed by Carver Residential they will need to undertake an identification check. This is done to meet our obligation under Anti Money Laundering Regulations (AML) and is a legal requirement. We use a specialist third party service to verify your identity, this is not a credit check and will have no effect on credit history. The cost of these checks is £36 inc. VAT per buyer, which is paid in advance, when an offer is agreed and prior to a sales memorandum being issued. This charge is non-refundable.





Floor Plan

Floor area 54.3 sq.m. (584 sq.ft.)

Energy Efficiency Rating		
	Current	Potential
Very energy efficient - lower running costs		
(92 plus) A		84
(81-91) B		
(69-80) C		
(55-68) D		
(39-54) E		
(21-38) F	71	
(1-20) G		
Not energy efficient - higher running costs		
England & Wales		EU Directive 2002/91/EC

Property size taken from EPC sq ft

Total floor area: 54.3 sq.m. (584 sq.ft.)

This floor plan is for illustrative purposes only. It is not drawn to scale. Any measurements, floor areas (including any total floor area), openings and orientations are approximate. No details are guaranteed, they cannot be relied upon for any purpose and do not form any part of any agreement. No liability is taken for any error, omission or misstatement. A party must rely upon its own inspection(s). Powered by www.Propertybox.io

Searching 1,000s of mortgages
 Access to 12,000+ products from 90+ lenders across the UK.
 Call: 01325 370341 Visit: Any of our offices
 Web: mortgageadvicebureau.com/carvers

Your home may be repossessed if you do not keep up repayments on your mortgage.
 There may be a fee for mortgage advice. The actual amount you pay will depend upon your circumstances.
 The fee is up to 1% but a typical fee is 0.3% of the amount borrowed.

These particulars do not constitute any part of an offer or contract. None of the statements contained in these particulars are to be relied on as statements or representations of fact and any intending purchaser must satisfy themselves by inspection or otherwise to the correctness of each of the statements contained in these particulars. The vendor does not make or give, and neither Carvers nor any person in their employment has any authority to make or give any representation or warranty whatever in relation to this property.