



THE CHASE, SW4

£685,000

- Two bedrooms
- Private garden
- Share of freehold
- Great transport
- Popular location
- Energy rating: C

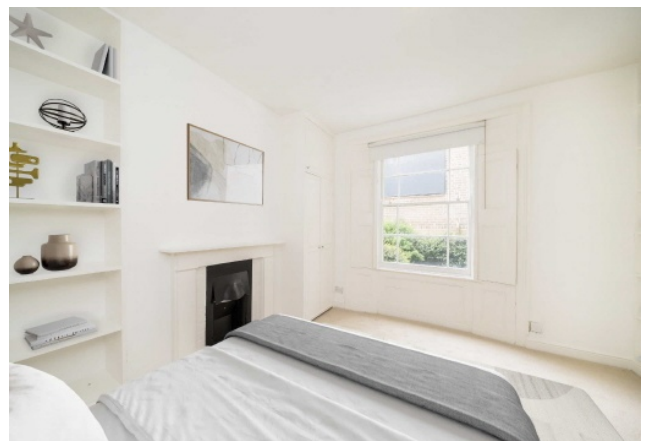
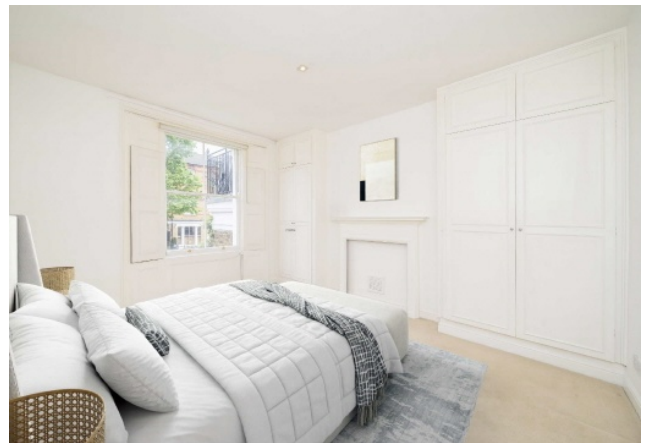




ABOUT THE HOME

A rarely available two double bedroom split-level maisonette with private patio located on The Chase, an enviable location close to Clapham Old Town.

Situated minutes from Clapham Common and the shops, bars and restaurants of Clapham Old Town (0.4 mile), The Chase is a sought after Clapham address popular for its proximity to local amenities. Commuting options include Wandsworth Road (Windrush line) Overground (0.5 mile), Clapham Common (Northern line) Underground (0.7 mile) and multiple bus routes serving the City and West End.



**Ground Floor****First Floor**

Total area (approx.): 92.1 sq. m (991.3 sq. ft)

JACKSONS CLAPHAM

73 Abbeville Road, London,

SW4 9JN

Sales: 020 8487 3177

Lettings: 020 8487 3178

Energy Rating: C We aim to make our particulars both accurate and reliable. However they are not guaranteed; nor do they form part of an offer or contract. If you require clarification on any points then please contact us, especially if you're traveling some distance to view. Please note that appliances and heating systems have not been tested and therefore no warranties can be given as to their good working order.