






CORNWALL GARDENS

South Kensington, SW7



OUTSTANDING APARTMENT WITH TWO TERRACES

An exceptional duplex apartment extending to approximately 1,306 sq ft, occupying the upper floors of an attractive period building in the heart of South Kensington.

			EPC
3	2	1	TBC

Local Authority: Royal Borough of Kensington and Chelsea

Council Tax band: G

Tenure: Leasehold with approximately 96 years remaining

Ground rent: £200 per annum, increased to £300 per annum in 2044

Service charge: £7,413 per annum (including garden levy), reviewed every year

Guide Price: £2,000,000



DUAL TERRACES & EXCEPTIONAL ENTERTAINING SPACE

Beautifully arranged over two floors, the property is centred around an impressive open-plan reception room and kitchen on the fifth floor, creating a wonderful entertaining space with excellent natural light. A particular highlight is the terraces positioned at either end of the top floor, which not only enhance the sense of space and flow but also provide exceptional areas for entertaining, with attractive views over Cornwall Gardens itself. The striking double-aspect reception room provides ample space for both dining and relaxation, while the dual outdoor areas offer a rare sense of openness in such a prime central London location. The bedroom accommodation is arranged on the fourth floor, providing well-proportioned and versatile living space suited to a variety of requirements. The principal suite overlooks Cornwall Gardens, with built-in wardrobes and en suite bathroom. Two further bedrooms are found on this level, served by a family bathroom across the hallway.

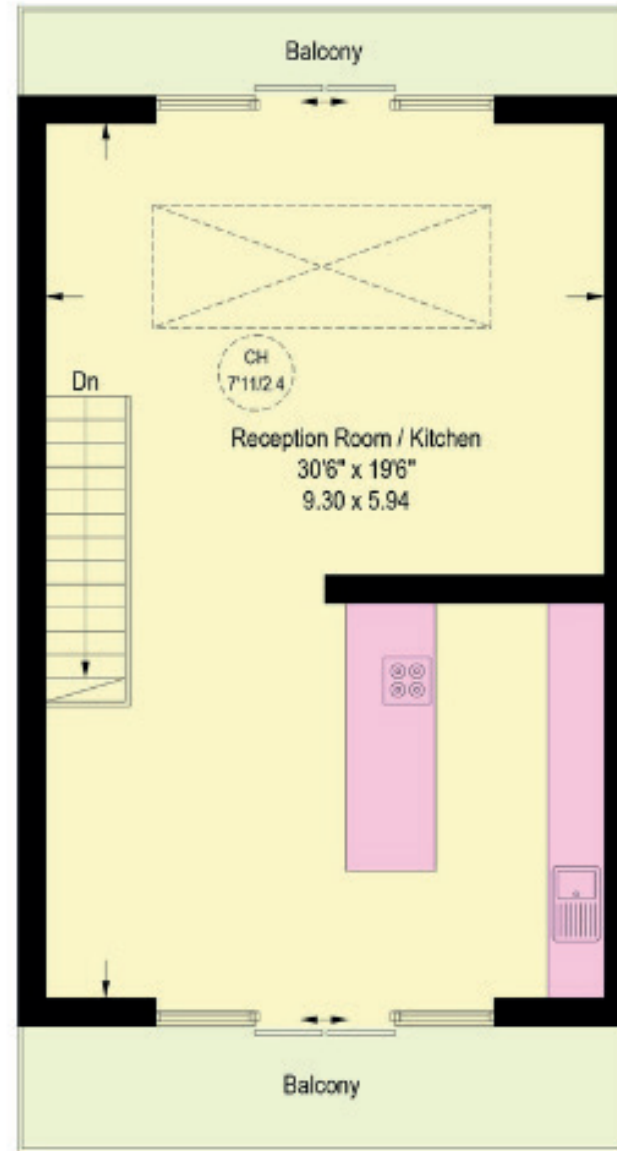








Fourth Floor



Fifth Floor

Cornwall Gardens, SW7

Approximate Gross Internal Area = 121.3 sq m / 1,306 sq ft

This plan is for layout guidance only. Not drawn to scale unless stated. Windows and door openings are approximate. Whilst every care is taken in the preparation of this plan, please check all dimensions, shapes and compass bearings before making any decisions reliant upon them. (ID767266)

We would be delighted
to tell you more.

Emmie-Lou Barclay

020 7349 4309

emmie-lou.barclay@knightfrank.com

Knight Frank Chelsea and South Kensington

352a Kings Road

SW3 5UU

[knightfrank.co.uk](https://www.knightfrank.co.uk)

Your partners in property

1. Particulars: These particulars are not an offer or contract, nor part of one. You should not rely on statements given by Knight Frank in the particulars, by word of mouth or in writing ("information") as being factually accurate about the property, its condition or its value. Neither Knight Frank nor any joint agent has any authority to make any representations about the property, and accordingly any information given is entirely without responsibility on the part of Knight Frank. 2. Material Information: Please note that the material information is provided to Knight Frank by third parties and is provided here as a guide only. While Knight Frank has taken steps to verify this information, we advise you to confirm the details of any such material information prior to any offer being submitted. If we are informed of changes to this information by the seller or another third party, we will use reasonable endeavours to update this as soon as practical. 3. Photos, Videos etc: The photographs, property videos and virtual viewings etc. show only certain parts of the property as they appeared at the time they were taken. Areas, measurements and distances given are approximate only. 4. Regulations etc: Any reference to alterations to, or use of, any part of the property does not mean that any necessary planning, building regulations or other consent has been obtained. A buyer must find out by inspection or in other ways that these matters have been properly dealt with and that all information is correct. 5. Fixtures and fittings: A list of the fitted carpets, curtains, light fittings and other items fixed to the property which are included in the sale (or may be available by separate negotiation) will be provided by the Seller's Solicitors. 6. VAT: The VAT position relating to the property may change without notice. 7. To find out how we process Personal Data, please refer to our Group Privacy Statement and other notices at <https://www.knightfrank.com/legals/privacy-statement>.

Particulars dated July 2026. Photographs and videos dated June 2026. All information is correct at the time of going to print. Knight Frank is the trading name of Knight Frank LLP. Knight Frank LLP is a limited liability partnership registered in England and Wales with registered number OC305934. Our registered office is at 55 Baker Street, London W1U 8AN. We use the term 'partner' to refer to a member of Knight Frank LLP, or an employee or consultant. A list of members names of Knight Frank LLP may be inspected at our registered office. If you do not want us to contact you further about our services then please contact us by either calling 020 3544 0692, email to marketing.help@knightfrank.com or post to our UK Residential Marketing Manager at our registered office (above) providing your name and address.