

Garden Court

West Drayton • Middlesex • UB7 7FA
PCM: £1,750 PCM



coopers
est 1986

A LUXURY apartment situated on the Garden Court development in West Drayton. Located close to Stockley Park Business Center and within easy reach of Heathrow Airport as well as both Uxbridge and West Drayton High streets. A footstep away from West Drayton high street, local amenities and local schools.

Accommodation; Three Bedrooms (master with en-suite bathroom), Further Luxury bathroom, Large lounge and fully fitted kitchen with appliances. Benefits; Gas central heating, Double glazing, lift and allocated undercroft parking. Furnished

Furnished

Allocated undercroft parking

Fully fitted kitchen

Ample storage space

Walking distance from West Drayton Station

Close to Stockley Park

Close to Heathrow

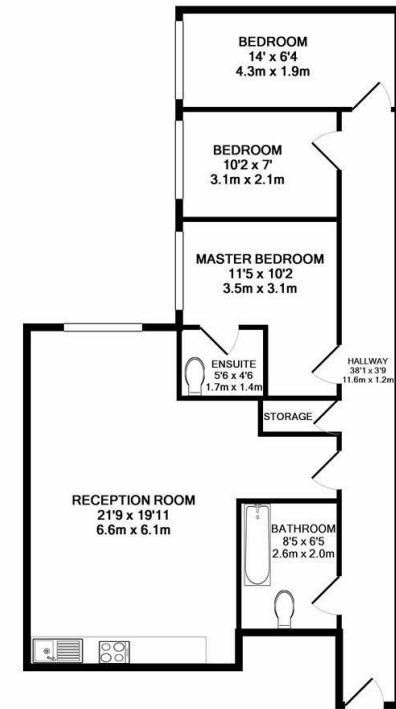
Local amenities

Easy access to M4/M25

Council Tax Band D

Available Date

18th May 2026



TOTAL APPROX. FLOOR AREA 793 SQ.FT. (73.6 SQ.M.)
 Whilst every attempt has been made to ensure the accuracy of the floor plan contained here, measurements of doors, windows, rooms and any other items are approximate and no responsibility is taken for any error, omission, or mis-statement. This plan is for illustrative purposes only and should be used as such by any prospective purchaser. The services, systems and appliances shown have not been tested and no guarantee as to their operability or efficiency can be given
 Made with Metropix ©2019



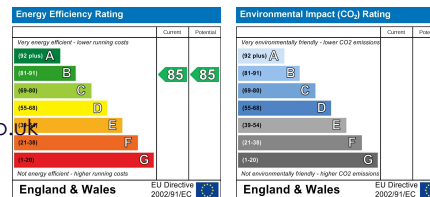
coopers
 est 1986

01895 257 566

**1 Vine Street, Uxbridge,
 Middlesex, UB8 1QE**

propertymanagement@coopersresidential.co.uk

CoopersResidential.co.uk



Important Notice: These particulars, whilst believed to be accurate are set out as a general outline only for guidance and do not constitute any part of an offer or contract. Intending purchasers should not rely on them as statements or representation of fact, but must satisfy themselves by inspection or otherwise has the authority to make or give any representation or warranty in respect of the property.