

Directions

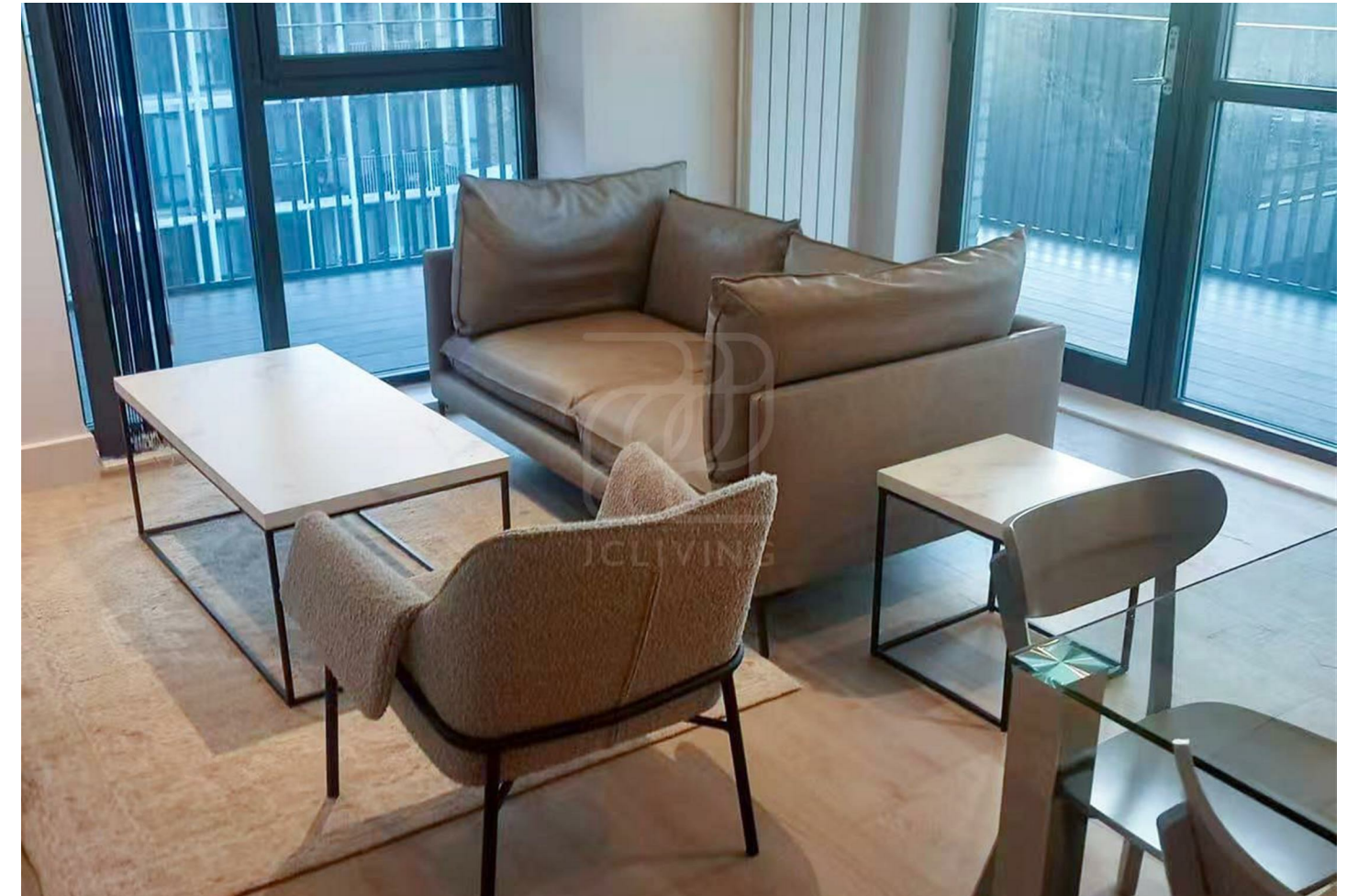
Viewings

Viewings by arrangement only. Call 02033696888 to make an appointment.

EPC Rating

B

Energy Efficiency Rating		
	Current	Potential
Very energy efficient - lower running costs		
(92 plus) A		
(81-91) B	85	
(69-80) C		
(55-68) D		
(39-54) E		
(21-38) F		
(1-20) G		
Not energy efficient - higher running costs		
England & Wales		
EU Directive 2002/91/EC		



ML102 Flat 602, 4 Windsor Square, London, SE18 6HS

£646

4 Windsor Square, London SE18 6HS

Nestled in the charming Windsor Square, London, this exquisite new build flat offers a modern living experience in a highly sought-after location. Spanning an impressive 646 square feet, the property boasts a well-designed layout that maximises space and comfort.

Upon entering, you are welcomed into a bright and airy reception room, perfect for both relaxation and entertaining. The flat features two generously sized bedrooms, providing ample space for rest and privacy. The contemporary bathroom is fitted with modern fixtures, ensuring a stylish and functional space.

Built in 2022, this property benefits from the latest in construction standards and design, offering a fresh and inviting atmosphere. The flat is ideal for professionals, couples, or small families looking to enjoy the vibrant lifestyle that London has to offer.

With its prime location in Windsor Square, residents will find themselves within easy reach of local amenities, parks, and excellent transport links, making commuting a breeze. This property is a perfect blend of modern living and convenience, making it a must-see for anyone looking to settle in this desirable area.

For further details or to arrange a viewing, please refer to the property reference JC25081523.

 2

 1

 1

 B

Council Tax Band: D

