

FLETCHERS

ESTATE AGENTS



Heathfield Terrace, W4

£535,000

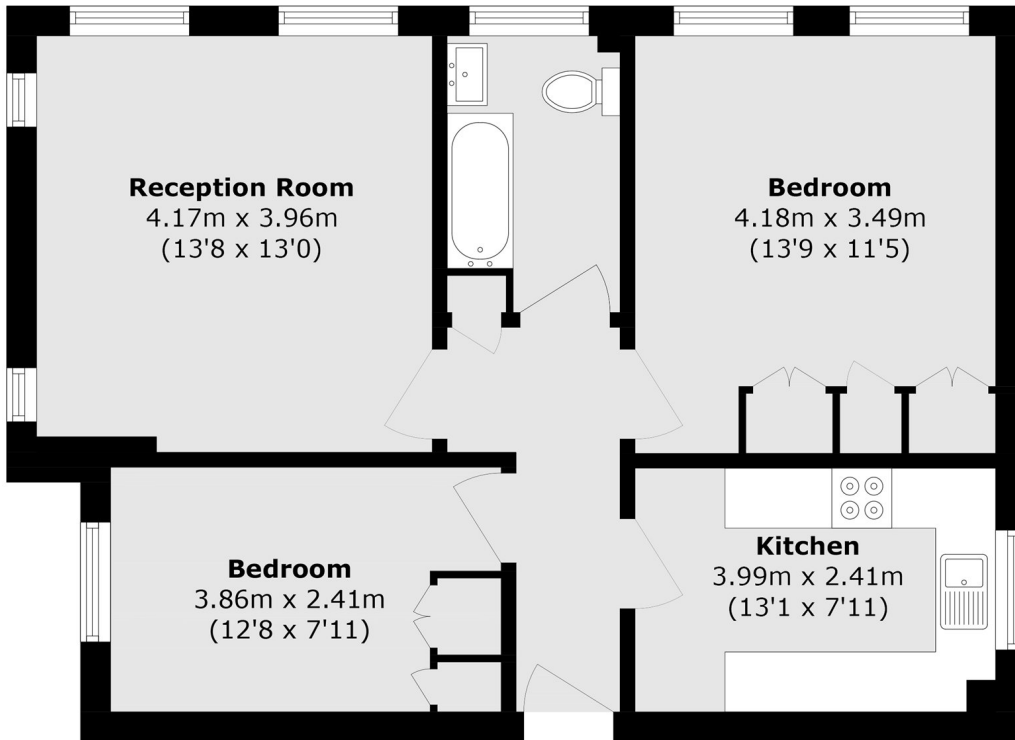
A rare opportunity to purchase a newly renovated lateral ground floor apartment in the popular Heathfield Court development, with a triple aspect and windows directly overlooking Turnham Green. The flat has been modernised tastefully with a new kitchen, bathroom and bespoke carpentry in each room. Heathfield Court owners have a right to park off street, a share in the freehold and there is an on site porter. The heating and hot water is included in the service charges. Garage available for separate negotiation.

Heathfield Court is a very well managed and maintained apartment block, in a prime location only moments from the wonderful array of High Street brands, restaurants, boutiques and supermarkets on Chiswick High Road, and has easy access to either Chiswick Park or Turnham Green stations.

- Ground Floor • Two Bedrooms • Newly Renovated • Bespoke Carpentry • Off Street Parking • Garage Available Separately •

FLETCHERS

ESTATE AGENTS



Total area (approx.): 63.0 sq. m (678.1 sq. ft)

Fletchers Brook Green Sales
144 Shepherds Bush Road, Hammersmith, London, W6 7PB
020 7603 1415
brookgreensales@fletcherestates.com

Energy Rating: D. We aim to make our particulars both accurate and reliable. However they are not guaranteed; nor do they form part of an offer or contract. If you require clarification on any points then please contact us, especially if you're traveling some distance to view. Please note that appliances and heating systems have not been tested and therefore no warranties can be given as to their good working order.