



KNARESBOROUGH DRIVE, SW18

£475,000

- Modern apartment
- Share of freehold
- Large private balcony
- Views over King George's park
- Sought after location
- Energy rating: TBC





## ABOUT THE HOME

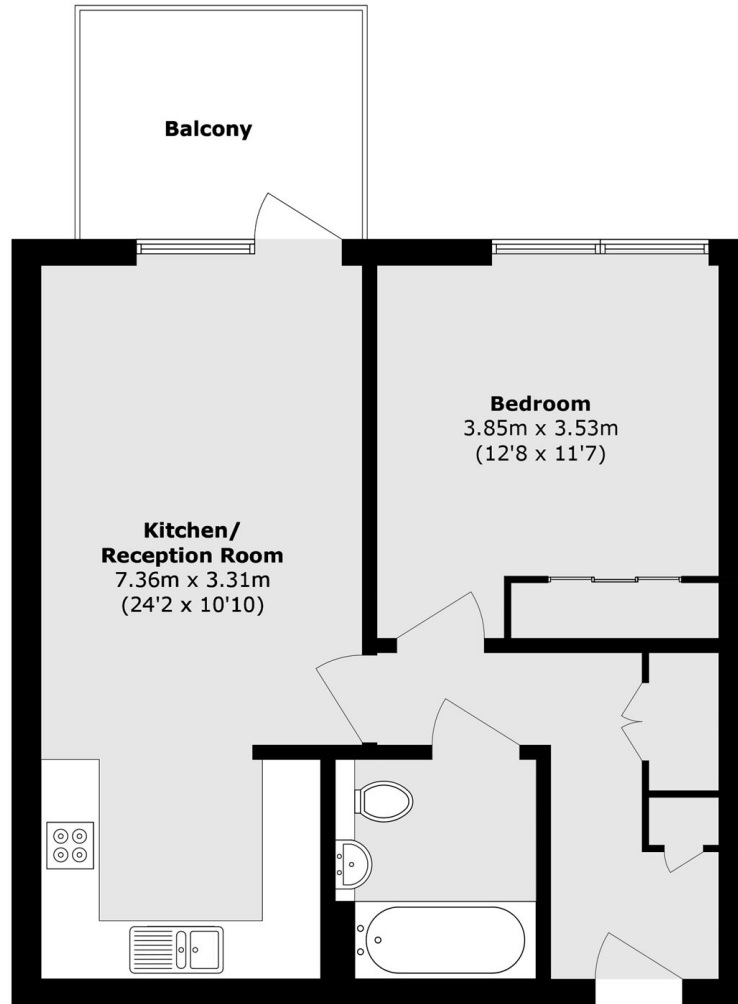
A modern one-bedroom apartment featuring a large private balcony with uninterrupted views over King George's Park.

The accommodation comprises a spacious hallway with a useful storage cupboard, and a well-presented contemporary kitchen with integrated appliances, open plan to the reception and dining areas. This space leads directly onto the impressive private balcony, ideal for entertaining. The property further benefits from a modern family bathroom and a generous double bedroom with a built-in wardrobe. The development also offers beautifully maintained communal gardens and a concierge service.

Greenacres House is situated on Knaresborough Drive, a quiet and well-regarded development ideally positioned on the doorstep of King George's Park. It is also within easy reach of central Earlsfield, offering a wide range of local amenities including trendy cafés, bars, restaurants, and excellent transport links, providing a convenient and effortless commute into central London.







### First Floor

Total area (approx.): 51.3 sq. m (552.2 sq. ft)

Balcony area (approx.): 6.9 sq. m (74.3 sq. ft)

#### JACKSONS EARLSFIELD

372-374 Garratt Lane,  
Earlsfield, London, SW18 4ES  
Sales: 020 8971 7979  
Lettings: 020 8971 7070

Energy Rating: We aim to make our particulars both accurate and reliable. However they are not guaranteed; nor do they form part of an offer or contract. If you require clarification on any points then please contact us, especially if you're traveling some distance to view. Please note that appliances and heating systems have not been tested and therefore no warranties can be given as to their good working order.