



barnard marcus

Marbles Way, TADWORTH KT20 5LQ



welcome to

Marbles Way, TADWORTH

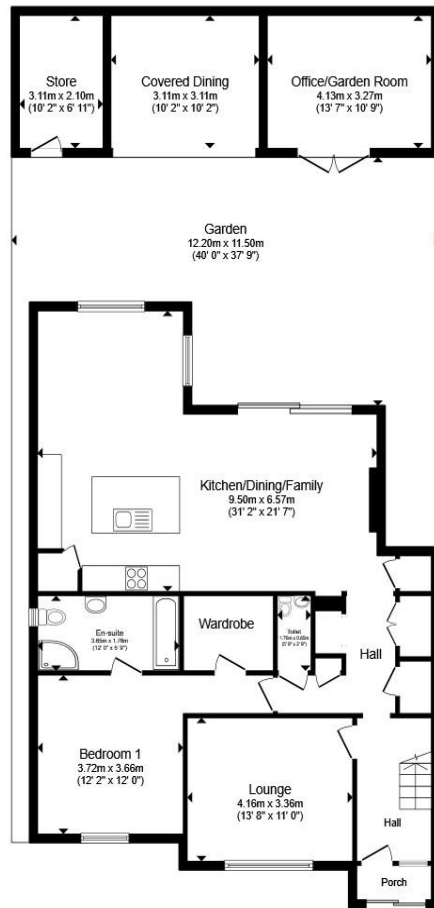
With its generous floor area, flexible accommodation and superb open plan living space, this property offers everything needed for comfortable family living - enhanced further by the separate garden office and excellent storage facilities.

A standout feature of this home is the detached office/garden room (12'2" x 9'6"), offering a quiet, private workspace separate from the main house - perfect for remote working, a studio, or gym.

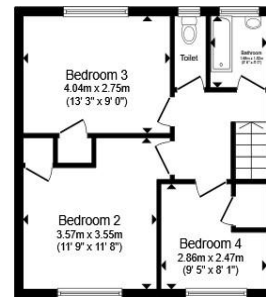
Located in a desirable residential area, this well designed property combines generous room sizes with a highly practical layout, making it ideal for families, home workers and buyers seeking flexible living arrangements. The home also lies in a popular area within walking distance to shops, station and schools as well as Tadworth leisure centre complete with gym and pool. Further benefits include direct train from Tadworth station (zone 6) to London Bridge station.

Early viewing is highly recommended.

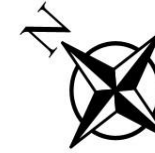




Ground Floor



First Floor



Total floor area 166.0 m² (1,787 sq.ft.) approx

This floor plan is for illustrative purposes only. It is not drawn to scale. Any measurements, floor areas (including any total floor area), openings and orientation are approximate. No details are guaranteed, they cannot be relied upon for any purpose and they do not form part of any agreement. No liability is taken for any error, omission or misstatement. A party must rely upon its own inspection(s). Powered by www.propertybox.io

welcome to

Marbles Way, TADWORTH

- Four Bedrooms including a Ground Floor Double Bedroom
- Stunning 27ft Open-plan Kitchen / Dining / Family Room
- Garden Office - Perfect for Working from Home
- Large Utility Room and Additional 19ft Store Room
- Ground Floor Shower Room and First Floor Family Bathroom

Tenure: Freehold EPC Rating: B
Council Tax Band: D

guide price

£650,000



check out more properties at [barnardmarcus.co.uk](https://www.barnardmarcus.co.uk)



Property Ref:
EPS109891 - 0005

1. MONEY LAUNDERING REGULATIONS Intending purchasers will be asked to produce identification documentation at a later stage and we would ask for your co-operation in order that there is no delay in agreeing the sale. 2. These particulars do not constitute part or all of an offer or contract. 3. The measurements indicated are supplied for guidance only and as such must be considered incorrect. Potential buyers are advised to recheck measurements before committing to any expense. 4. We have not tested any apparatus, equipment, fixtures or services and it is in the buyers interest to check the working condition of any appliances. 5. Where an EPC, or a Home Report (Scotland only) is held for this property, it is available for inspection at the branch by appointment. If you require a printed version of a Home Report, you will need to pay a reasonable production charge reflecting printing and other costs. 6. We are not able to offer an opinion either written or verbal on the content of these reports and this must be obtained from your legal representative. 7. Whilst we take care in preparing these reports, a buyer should ensure that his/her legal representative confirms as soon as possible all matters relating to title including the extent and boundaries of the property and other important matters before exchange of contracts.

Barnard Marcus is a trading name of Sequence (UK) Limited which is registered in England and Wales under company number 4268443, Registered Office is Cumbria House, 16-20 Hockliffe Street, Leighton Buzzard, Bedfordshire, LU7 1GN. VAT Registration Number is 500 2481 05.

Please note the marker reflects the
postcode not the actual property



barnard marcus



01372 740911



Epsom@barnardmarcus.co.uk



2 Kings Shade Walk, The Ashley Centre, Epsom,
Surrey, KT19 8EB



[barnardmarcus.co.uk](https://www.barnardmarcus.co.uk)