



Westbury Road, W5

£519,950

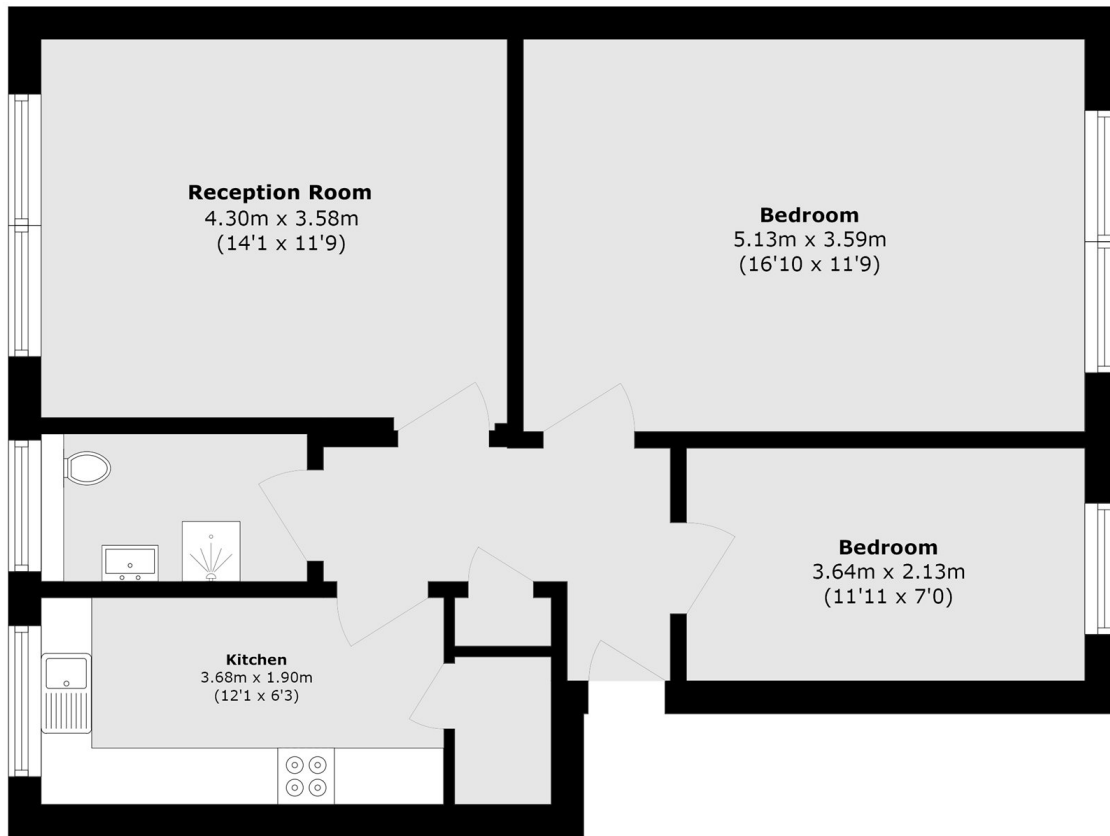
This recently refurbished two-bedroom first-floor flat has been finished to a high standard throughout. It features a spacious reception room, separate kitchen, two double bedrooms, and a modern bathroom. Additional benefits include a communal garden and a private garage, offering both convenience and extra space.

Located close to Haven Green and opposite Ealing Cricket Club, the flat enjoys a vibrant local community, with shops, cafes, and restaurants within easy reach. Excellent transport links nearby make commuting straightforward.

Features

- Purpose Built
- Two Double Bedrooms
- Separate Kitchen
- Private Garage
- Communal Garden
- Close To Transport

Westbury Road, London, W5



Total area (approx.): 61.2 sq. m (658.7 sq. ft)