



BUCKINGHAM HEIGHTS 1. GORRINGE ROAD

BUCKINGHAM  
HEIGHTS  
1-9

Gorringe Road, Eastbourne, BN22 8XL

£1,100

## Gorringe Road, Eastbourne, BN22 8XL

Situated in the highly sought-after Gorringe Road area of Eastbourne, this two-bedroom apartment offers spacious living, just moments from the seafront and town centre amenities.

The property features a bright and airy open-plan living and dining area, flooded with natural light and providing direct access to a private balcony. The kitchen is well-appointed with ample storage and workspace.

There are two well-proportioned bedrooms, including a generous principal bedroom and a versatile second bedroom. A three piece bathroom suite completes the internal accommodation.

Further benefits include allocated off-road parking, secure entry system, and well-maintained communal areas - also available with a garage!

Ideally located within easy reach of Eastbourne's seafront, mainline railway station, shops, cafes, and restaurants.

Please note:  
An annual household income of £33,000 per annum is required





### Living Room

10'9" x 15'4" (3.3 x 4.69)

### Kitchen

7'2" x 12'0" (2.19 x 3.66)

### Bathroom

11'1" x 5'10" (3.39 x 1.8)

### Bedroom One

15'11" x 10'10" (4.86 x 3.32)

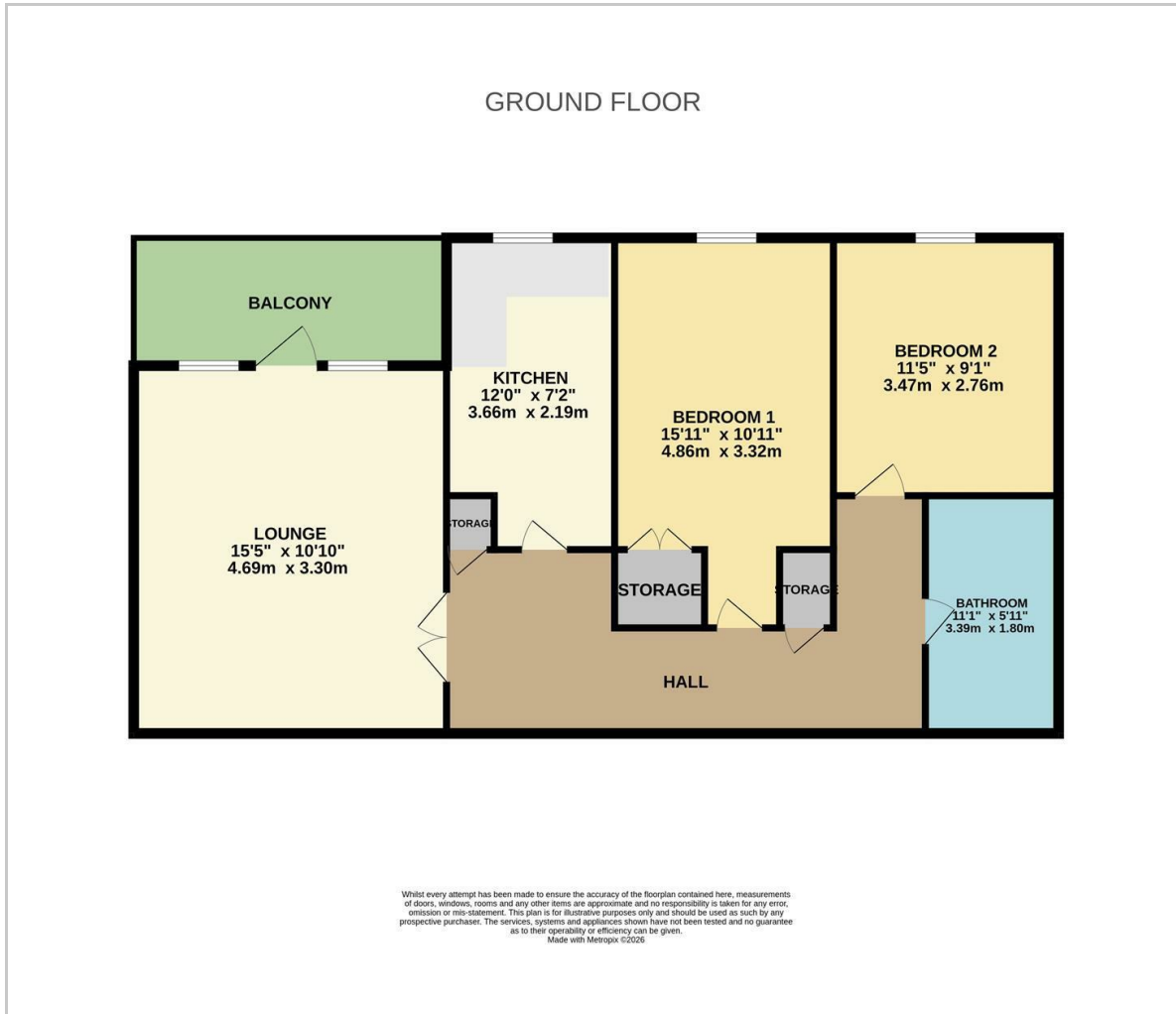
### Bedroom Two

11'4" x 9'0" (3.47 x 2.76)

Council Tax Band C - £2051.34 per anum



## Floor Plan

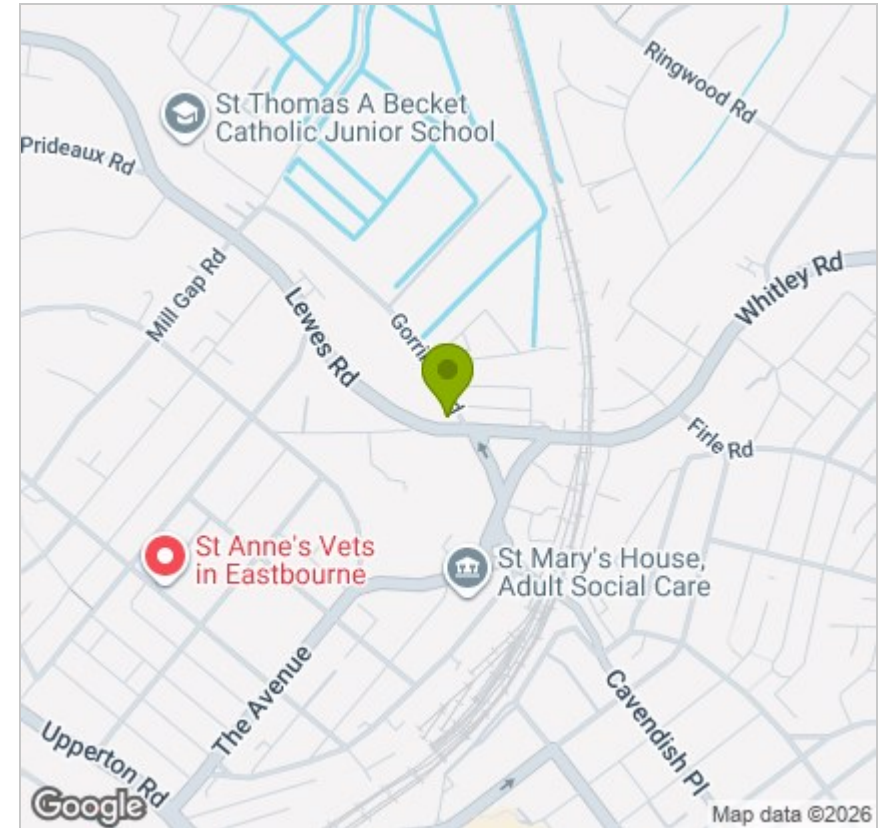


## Viewing

Please contact us on 01323 405553 if you wish to arrange a viewing appointment for this property or require further information.

These particulars, whilst believed to be accurate are set out as a general outline only for guidance and do not constitute any part of an offer or contract. Intending purchasers should not rely on them as statements of representation of fact, but must satisfy themselves by inspection or otherwise as to their accuracy. No person in this firm's employment has the authority to make or give any representation or warranty in respect of the property.

## Area Map



## Energy Efficiency Graph

