



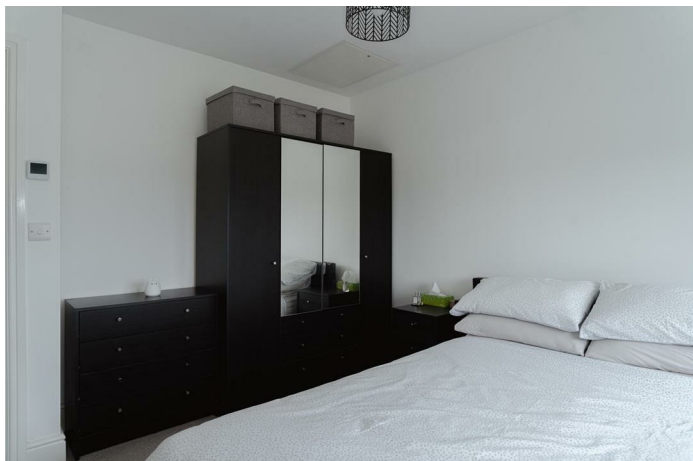
Hoadley Road, Horley
£300,000





This bright top-floor apartment at Lysander Court offers spacious modern living with uninterrupted views over a tranquil nature reserve. Featuring two double bedrooms, a stylish bathroom, open-plan living, a private balcony, and allocated parking, it's a peaceful yet practical retreat close to local amenities.



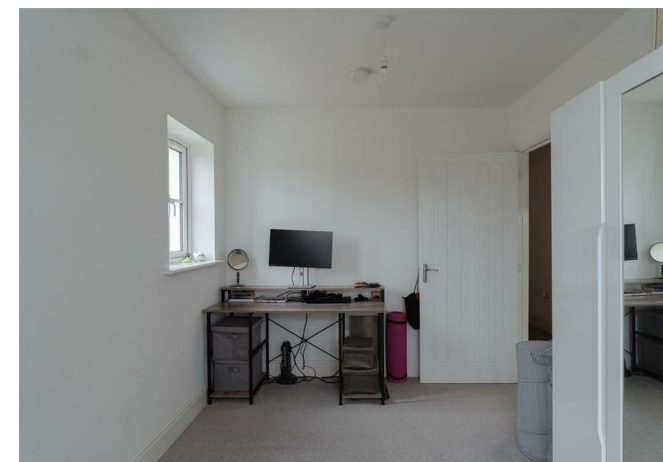


Bathed in natural light on the top floor of Lysander Court along Hoadley Road, this bright and spacious apartment offers a peaceful retreat with uninterrupted views over the neighbouring nature reserve. Every window frames greenery, creating a calming backdrop to daily life.

Inside, the property features two generous double bedrooms and a stylishly appointed bathroom. The heart of the home is a large open-plan kitchen, living, and dining area—perfect for entertaining or relaxing in comfort. Natural light pours in throughout the day, enhancing the sense of space and serenity.

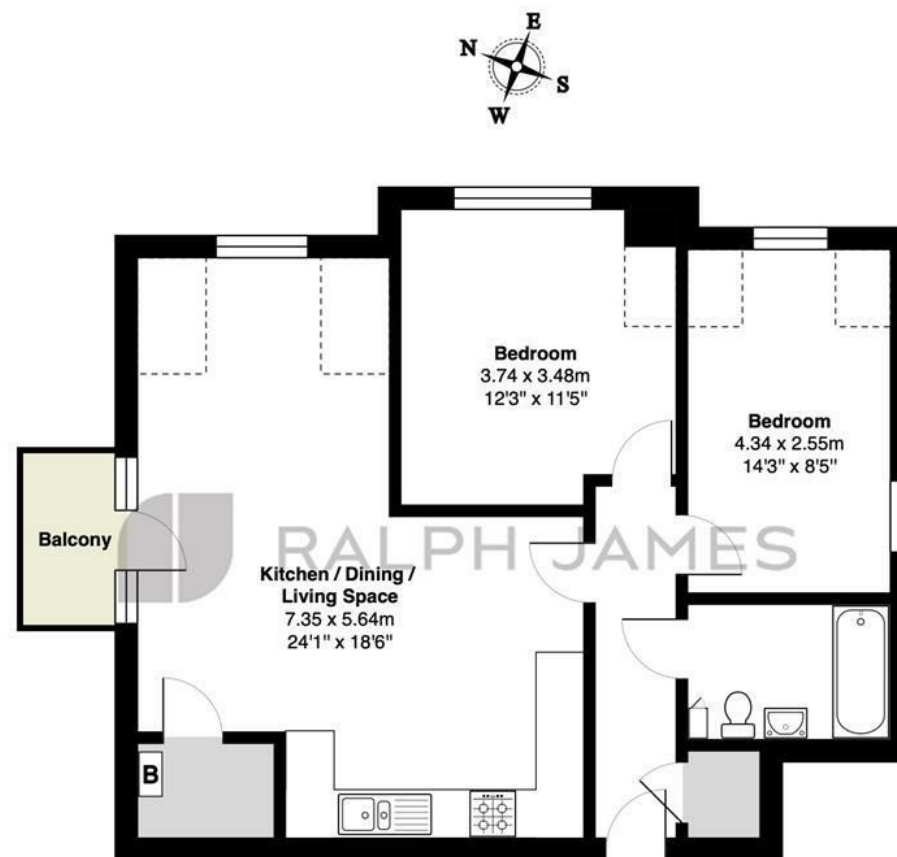
A private balcony extends from the living area, comfortably sized for a small table and chairs, making it an ideal spot for morning coffee or evening unwinding. The apartment also benefits from allocated parking for one vehicle and secure bike storage, adding practicality to its appeal.

This top floor flat combines modern living with a connection to nature, all within easy reach of local amenities and transport links. It's an ideal choice for professionals, couples, or investors seeking a well-balanced lifestyle.



Need to know

- Top floor apartment in Lysander Court, Hoadley Road, offering elevated privacy and peaceful surroundings
- Two spacious double bedrooms and a well-appointed family bathroom
- Large open-plan kitchen, living, and dining area ideal for modern living and entertaining
- Private balcony with space for a small table and chairs—perfect for relaxing outdoors
- Stunning views of the adjacent nature reserve from every window
- Abundant natural light throughout the property, enhancing the sense of space
- Allocated parking for one vehicle and secure bike storage included
- Conveniently located with easy access to local amenities and transport links
- EPC B



Second Floor

Lysander Court, 2 Hoadley Road, Horley

Total Area: 70.3 m² ... 757 ft² (excluding balcony)

FOR ILLUSTRATIVE PURPOSES ONLY.

Whilst every attempt has been made to ensure the accuracy of the floor plan shown, all measurements, positioning, fixtures, features, fittings and any other data shown are an approximate interpretation for illustrative purposes only and are not to scale.

No responsibility is taken for any error, omission, miss-statement or use of data shown.

The above statement applies to both 'Still Moving London LTD' and the Company or individual displaying this floor plan.

Unauthorised reproduction prohibited.

Â© Still Moving London LTD (www.stillmoving.london)



Interested?

redhill@ralphjames.co.uk
01737 765 555

1

ralphjames.co.uk