



## Kempton Drive, Barleythorpe

Immaculately presented four bedroom home located on the popular Barleythorpe development.

### FEATURES

- Stylish Modern Home Finished To A High Standard Throughout
- Spacious Lounge With Eco Log Burner
- Open Plan Kitchen Diner
- Four Bedrooms, Master With Ensuite & Built In Wardrobes
- Generous Landscaped Garden
- Garage And Driveway
- Popular Location







## ACCOMMODATION

This stunning and contemporary family home offers beautifully presented living spaces, thoughtfully designed to combine style, comfort, and practicality. Boasting a generous landscaped garden, modern interiors, and impressive features throughout, this property is perfect for modern family living.



As you enter the home, the welcoming entrance hall leads to a spacious lounge, enhanced with stylish wall panelling and a striking feature multi-fuel burner – creating a warm and inviting atmosphere. To the rear, the bright and airy kitchen/diner spans the full width of the property, offering an ideal space for both family meals and entertaining, with direct access to the garden. A convenient downstairs WC completes the ground floor.



Upstairs, the property provides four well-proportioned bedrooms. The principal suite benefits from a dressing area and a private en-suite shower room, while the remaining bedrooms are served by a modern family bathroom.

To book a viewing call our area experts

[www.mooresestateagents.com](http://www.mooresestateagents.com)

Moores Property Hub 01572 757979 | Moores Move to the Country 020 301 11361  
 Melton 01664 491610 | Uppingham 01572 821935 | Stamford 01780 484555  
 Grantham Meet & Greet 01476 855618 | Peterborough Meet & Greet 01733 788888  
 A1 Meet & Greet Stoke Rochford | [office@mooresestateagents.com](mailto:office@mooresestateagents.com)





## EXTERNAL

Externally, this home continues to impress. A beautifully landscaped generous garden offers the perfect outdoor retreat, with space for relaxation and play. To the side, there is a carport and separate garage, providing excellent parking and storage solutions.

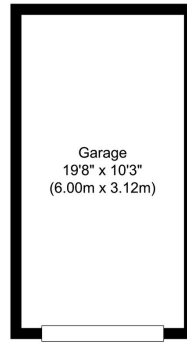
This property is a rare find, combining modern elegance with practical family living in a home that is ready to move straight into and enjoy.



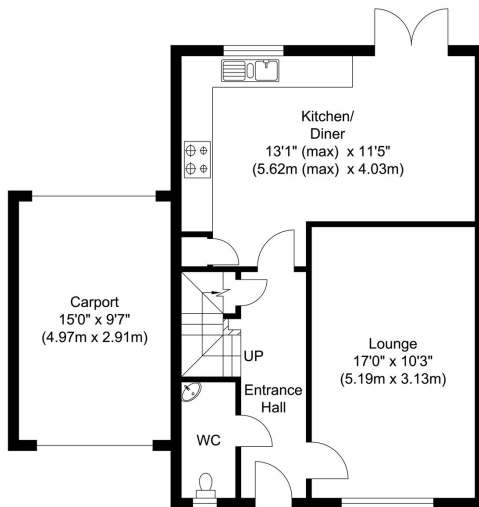
To book a viewing call our area experts

[www.mooresestateagents.com](http://www.mooresestateagents.com)

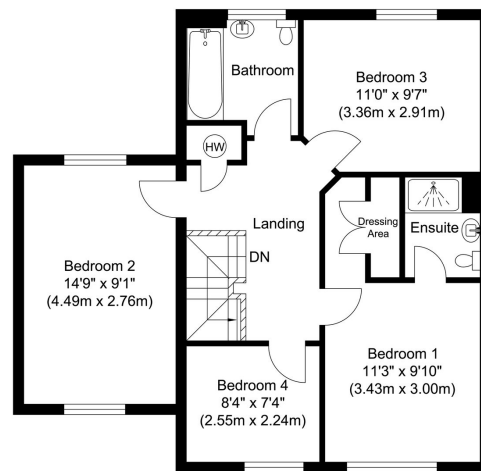
Moores Property Hub 01572 757979 | Moores Move to the Country 020 301 11361  
Melton 01664 491610 | Uppingham 01572 821935 | Stamford 01780 484555  
Grantham Meet & Greet 01476 855618 | Peterborough Meet & Greet 01733 788888  
A1 Meet & Greet Stoke Rochford | [office@mooresestateagents.com](mailto:office@mooresestateagents.com)



Outbuilding  
Approximate Floor Area  
201.50 sq. ft  
(18.72 sq. m)



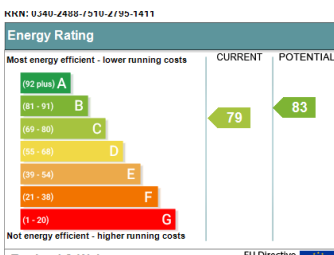
Ground Floor  
Approximate Floor Area  
514.51 sq. ft  
(47.80 sq. m)



First Floor  
Approximate Floor Area  
659.82 sq. ft  
(61.30 sq. m)

Illustration for identification purposes only, measurements are approximate, not to scale.

## EPC RATING



## To book a viewing call our area experts:

Moore's Property Hub  
Moore's Move to the Country  
Melton  
Uppingham  
Stamford  
Grantham Meet & Greet  
Peterborough Meet & Greet  
A1 Meet & Greet Stoke Rochford

01572 757979  
020 301 11361  
01664 491610  
01572 821935  
01780 484555  
01476 855618  
01733 788888

## Follow us for Property Updates



@mooresestateagents



@mooresestatepropertyhub

For short, informative videos on our areas, please click here: <https://mooresestateagents.com/minute-guides/>

Moore V Ltd trading as Moore's Estate Agents gives notice that: 1. These particulars do not constitute an offer or contract or part thereof. 2. All descriptions, photographs and plans are for guidance only and should not be relied upon as statements or representations of fact. All measurements are approximate and not necessarily to scale. Any prospective purchaser must satisfy themselves of the correctness of the information within the particulars by inspection or otherwise. 3. Moore V Ltd trading as Moore's Estate Agents does not have any authority to give any representations or warranties whatsoever in relation to this property (including but not limited to planning/building regulations), nor can it enter into any contract on behalf of the Vendor. 4. Moore V Ltd trading as Moore's Estate Agents does not accept responsibility for any expenses incurred by prospective purchasers in inspecting properties which have been sold, let or withdrawn. 5. If there is anything of particular importance to you, please contact this office and we will try to have the information checked for you.