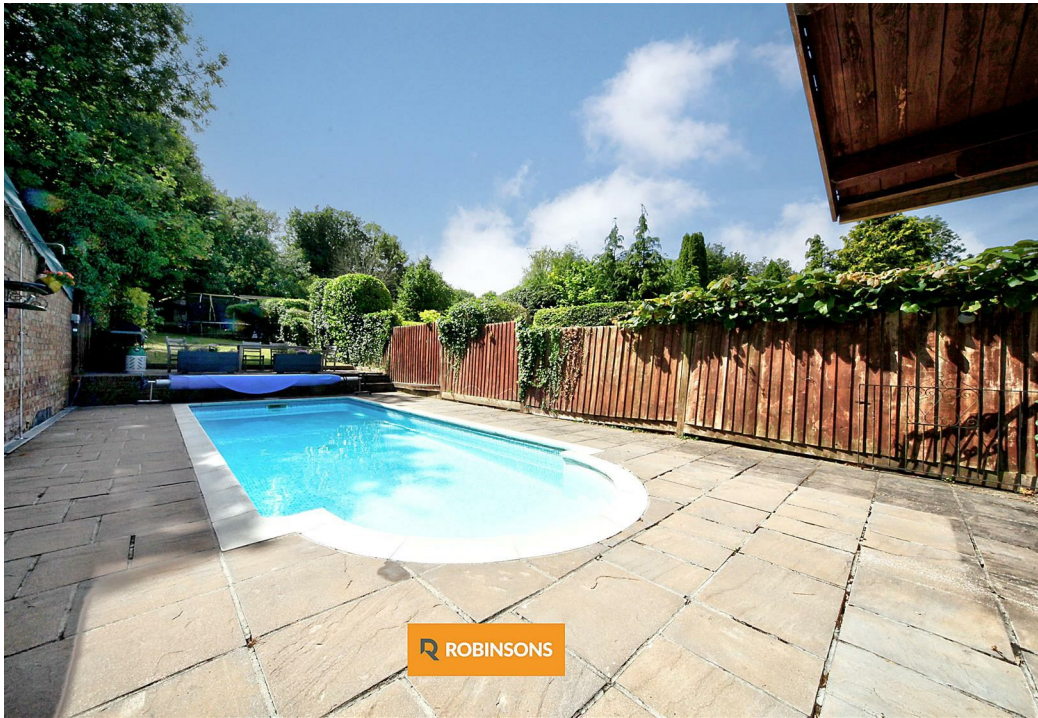
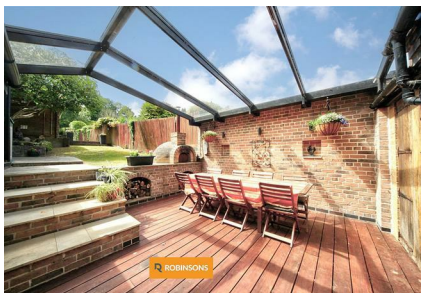
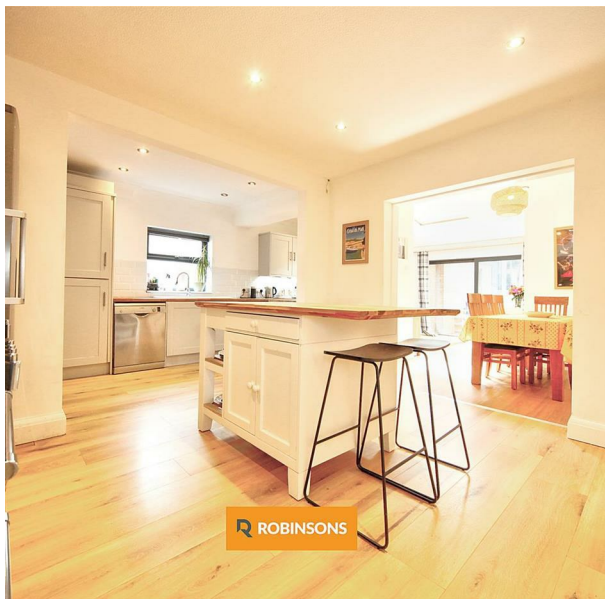
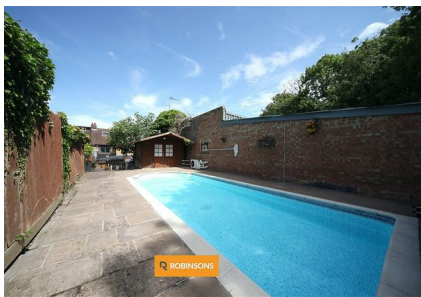
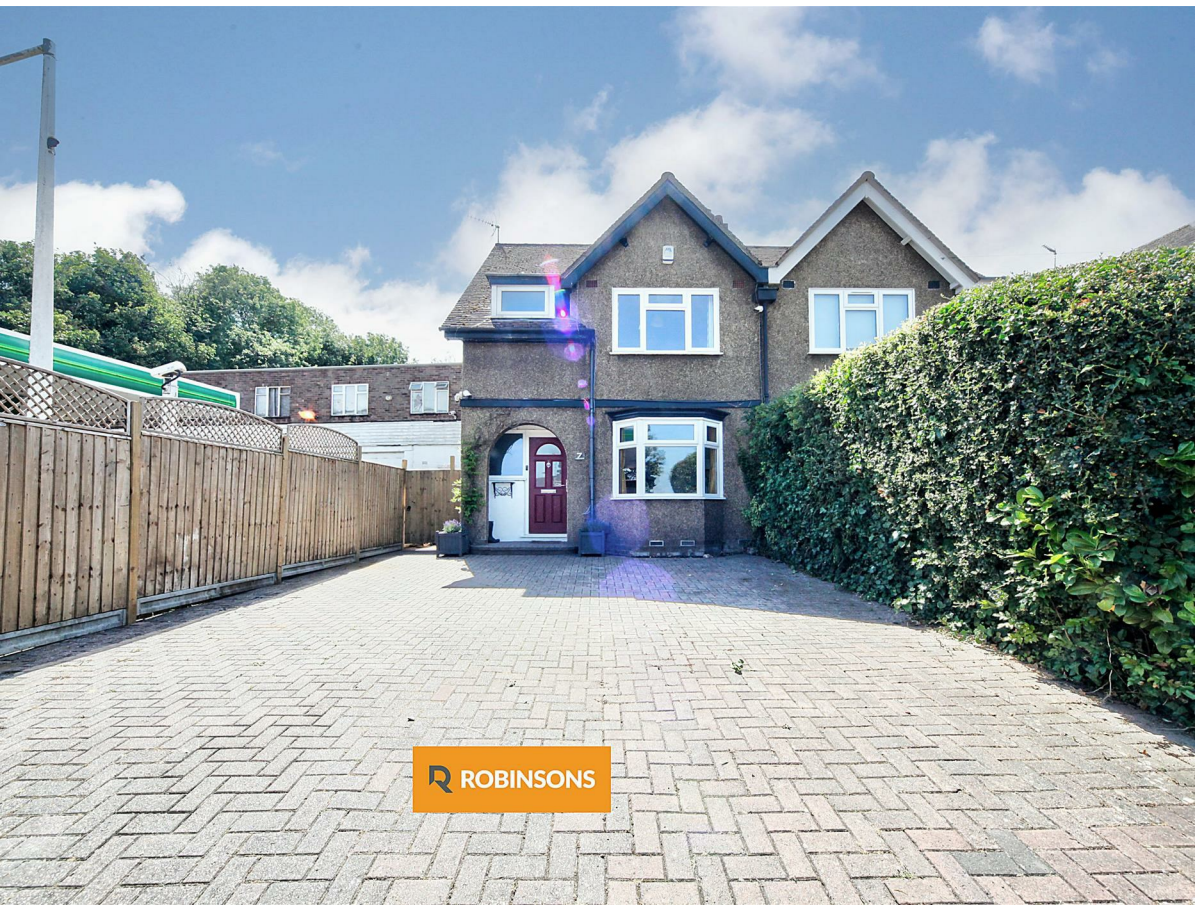


7 Tring Road, West, Dunstable, Bedfordshire, LU6 2PX
£550,000

ROBINSONS

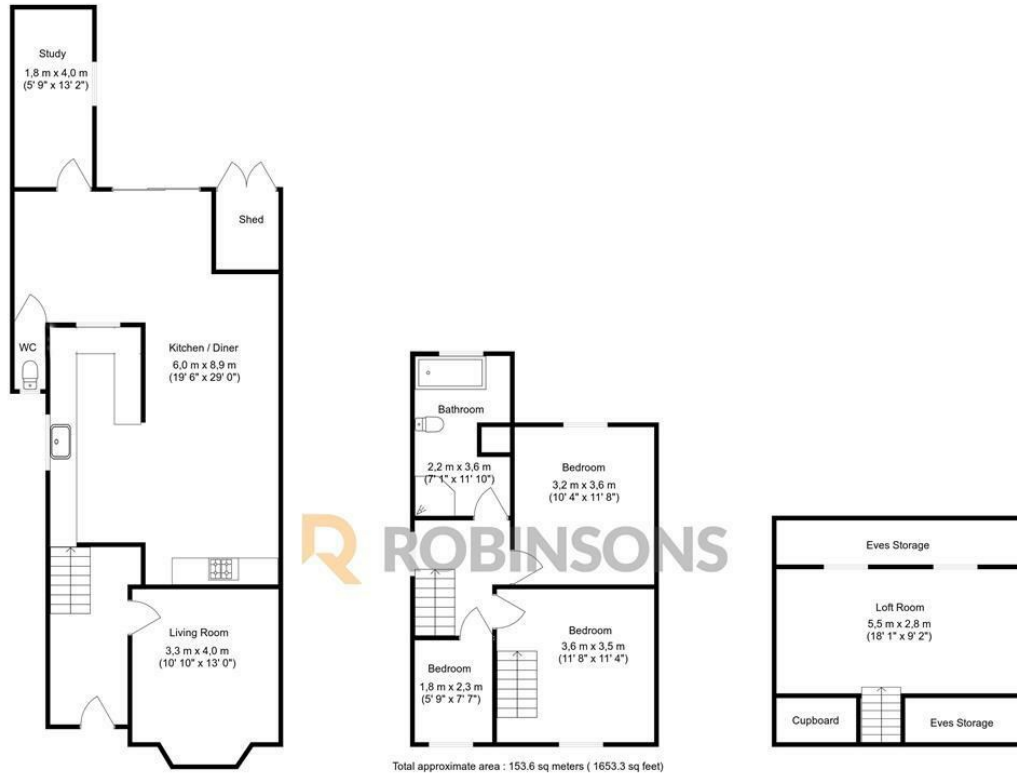


FAMILY HOME WITH HEATED OUTDOOR SWIMMING POOL, LOFT ROOM & APPROX. 230FT PRIVATE GARDEN | NO ONWARD CHAIN.

Set at the foot of the highly sought-after Dunstable Downs, this exceptional extended semi-detached family home offers generous living space, outstanding outdoor features and a real sense of privacy, all on an impressive plot and available with no onward chain.

The ground floor is ideal for modern family life, featuring a cosy separate lounge and a striking open-plan kitchen/dining room with central island, perfect for entertaining. Further benefits include a dedicated home office, walk-in utility cupboard and a convenient downstairs WC.

To the first floor are three well-proportioned bedrooms alongside a stylish refitted four-piece family bathroom. The fully converted loft room, accessed via the third bedroom, provides a flexible additional space, ideal as a fourth bedroom, guest room or hobby room.



Floorplan produced by Woodside Photography
Floorplan is for illustration purposes only and all measurements are approximate



20 West Street
Dunstable
Bedfordshire
LU6 1SX
01582 661112
sales@robinsons-estates.co.uk
<https://www.robinsons-estates.co.uk>

