



RE/MAX
Elite



15 Warstone Lane, Birmingham, B18 6HU
£198,000

STUNNING TWO BEDROOM APARTMENT WITH LARGE PRIVATE BALCONY IN A SOUGHT-AFTER CITY CENTRE DEVELOPMENT

A beautifully presented and spacious two-bedroom apartment situated within a modern and secure city centre development. Offering a bright open-plan living/dining area, contemporary fitted kitchen, private balcony, master bedroom with en-suite, and excellent built-in storage throughout, this superb apartment is ideal for professionals, first-time buyers, or investors seeking stylish urban living.

Entrance Hallway

A welcoming and spacious hallway providing access to all principal rooms. Finished with modern flooring and neutral décor, with additional storage cupboards adding practicality.

Living / Dining Room 19'7" x 11'8" (5.98m x 3.56m)

A superbly sized open-plan living and dining space flooded with natural light from the large glazed balcony doors and window. The room offers ample space for lounge furniture and a dining area, creating an excellent social and entertaining environment. Direct access leads onto the impressive private balcony.

Balcony 8'1" x 11'9" (2.48m x 3.59m)

A generous covered balcony providing an excellent outdoor seating area with elevated views across the development and city skyline. Perfect for morning coffee, dining, or relaxing outdoors.

Kitchen 10'7" x 7'3" (3.23m x 2.21m)

A stylish modern fitted kitchen featuring a range of gloss wall and base units, wood-effect work surfaces, integrated oven and hob with extractor hood, stainless steel sink unit, tiled splashbacks, and space for appliances. Cleverly designed to maximise storage and functionality.

Main Bedroom 10'11" x 16'9" (3.34m x 5.12m)

An exceptionally spacious double bedroom featuring large windows, fitted wardrobes, and ample room for additional bedroom furniture. A bright and peaceful room complemented by access to a modern en-suite shower room.

En-Suite Shower Room 5'6" x 5'1" (1.68m x 1.57m)

Contemporary en-suite fitted with a shower enclosure, WC, wash hand basin with vanity storage, heated towel rail, and stylish tiling throughout.

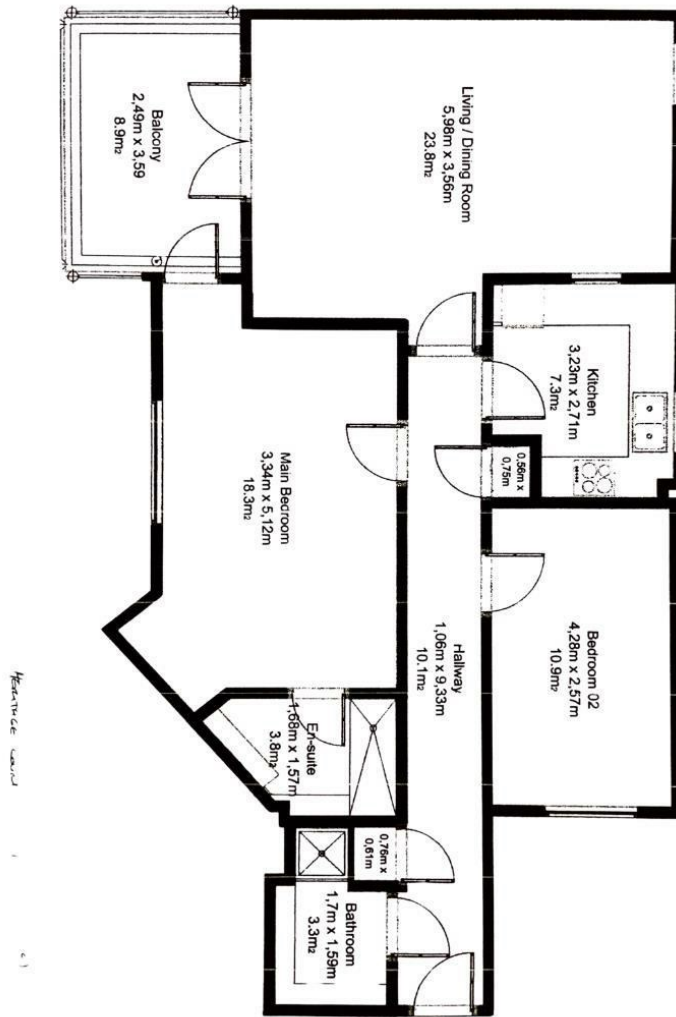
Bedroom Two 14'0" x 8'5" (4.28m x 2.57m)

A well-proportioned second double bedroom ideal for guests, sharers, or home office use. Bright and versatile with neutral décor.

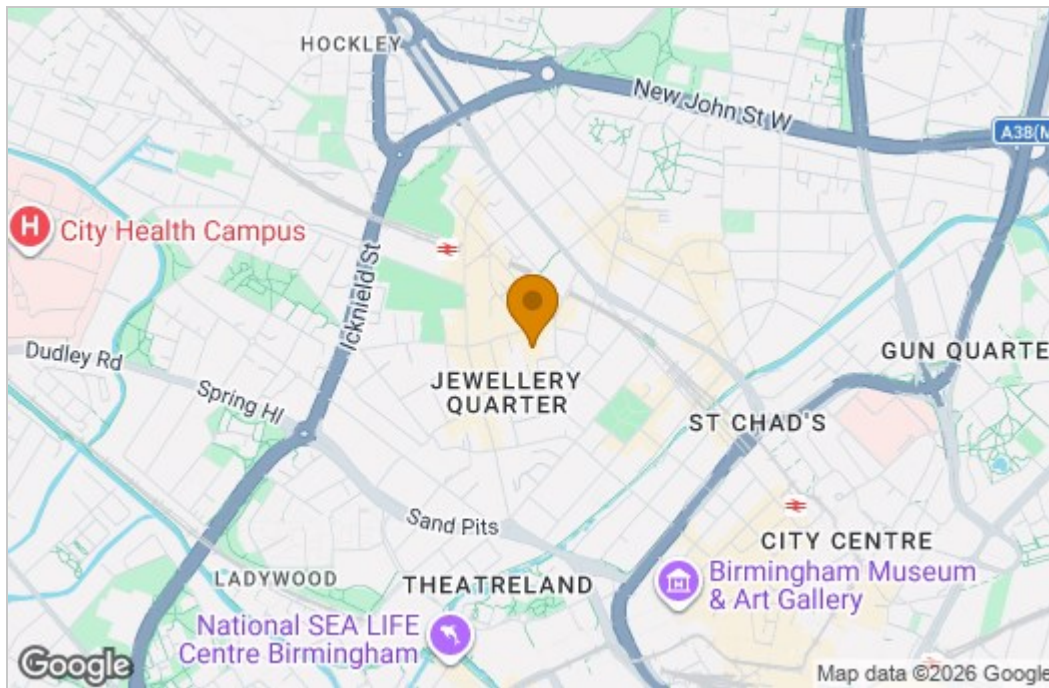
Bathroom 5'8" x 5'2" (1.73m x 1.59m)

A modern family bathroom comprising bath with shower attachment, WC, wash hand basin, vanity storage, heated towel rail, and contemporary tiled finishes.

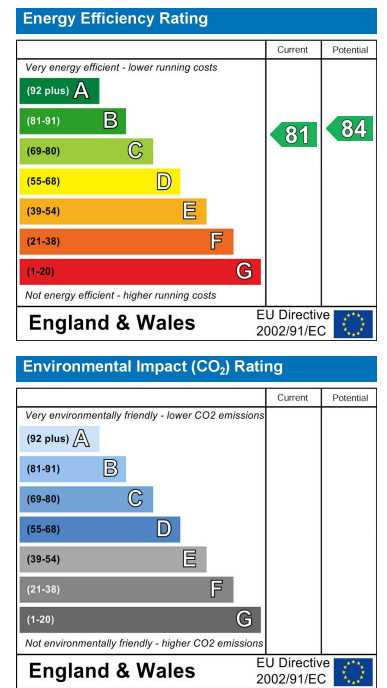
Floor Plan



Area Map



Energy Efficiency Graph



These particulars, whilst believed to be accurate are set out as a general outline only for guidance and do not constitute any part of an offer or contract. Intending purchasers should not rely on them as statements of representation of fact, but must satisfy themselves by inspection or otherwise as to their accuracy. No person in this firm's employment has the authority to make or give any representation or warranty in respect of the property.