

# HUNTERS<sup>®</sup>

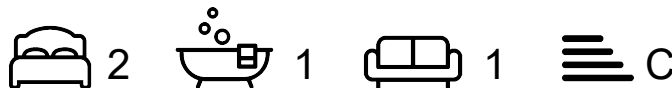
HERE TO GET *you* THERE



## Queen Elizabeth's Walk - **LET AGREED**

London, N16

£3,000.00 Per Calendar Month



Available to view by appointment only and ideally positioned on a quiet residential road, within walking distance of Clissold Park and Church Street, is this delightful two double bedroom apartment boasting over 610 sq. ft. (56 sq. mt.) of internal accommodation.

Set on the ground floor of a well maintained purpose built apartment building, the property benefits from a light filled, dual-aspect, recently refurbished open plan reception/kitchen area with herringbone parquet flooring throughout and double doors leading to a private, south-facing garden extending over 35 feet. There is a master bedroom, further double guest bedroom/home office, modern bathroom and ample storage. Gated, off-street parking is also available.

Gordon Lodge is located on Queen Elizabeths Walk, moments from the many bars, restaurants and coffee houses of Stoke Newington Church Street, Blackstock Road & Finsbury Park and the wide open spaces of the stunning Clissold Park and Woodberry Wetlands.

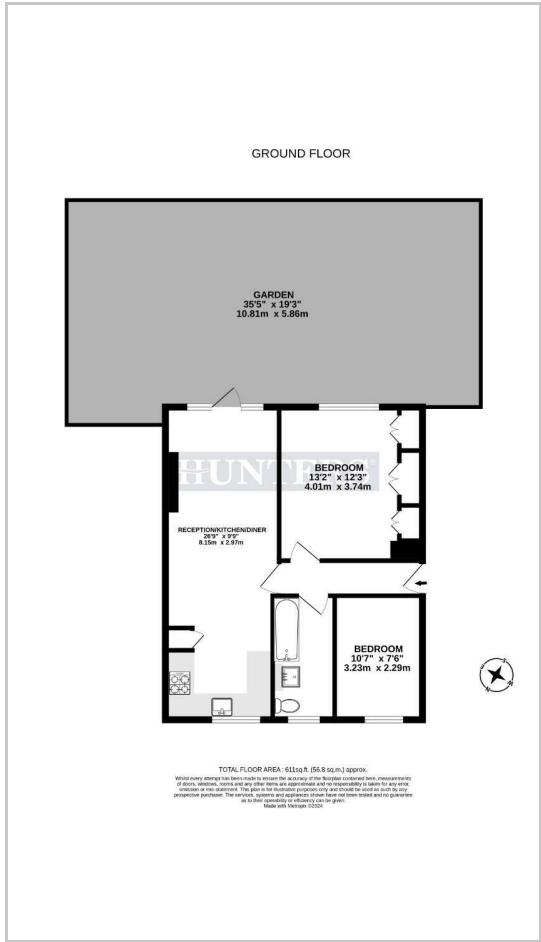
Transport links include Stoke Newington Station (Overground), Finsbury Park Station (National Rail, Thameslink, Piccadilly & Victoria Lines), Manor House Station (Piccadilly Line) and a variety of Bus routes into The City & West End.



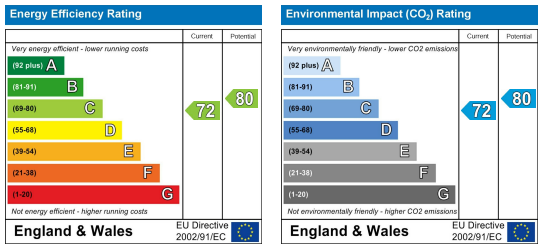
# Area Map



# Floor Plans



# Energy Efficiency Graph



These particulars are intended to give a fair and reliable description of the property but no responsibility for any inaccuracy or error can be accepted and do not constitute an offer or contract. We have not tested any services or appliances (including central heating if fitted) referred to in these particulars and the purchasers are advised to satisfy themselves as to the working order and condition. If a property is unoccupied at any time there may be reconnection charges for any switched off/disconnected or drained services or appliances - All measurements are approximate. **THINKING OF SELLING?** If you are thinking of selling your home or just curious to discover the value of your property, Hunters would be pleased to provide free, no obligation sales and marketing advice. Even if your home is outside the area covered by our local offices we can arrange a Market Appraisal through our national network of Hunters estate agents.