



## Chiswick Lane, W4

£634 Per week

Situated on Chiswick Lane, this apartment with two double bedrooms features a spacious reception room, a separate kitchen, two bedrooms, and a generously sized family bathroom.

This apartment boasts an ideal location, offering convenient access to Chiswick High Road's local amenities. Additionally, it is situated just a short distance away from the heritage site of Chiswick Park and the scenic River Thames.

### Features

- Two Bedrooms
- Modern Kitchen
- Large Reception
- Transport Links
- Built In Storage
- Great Location



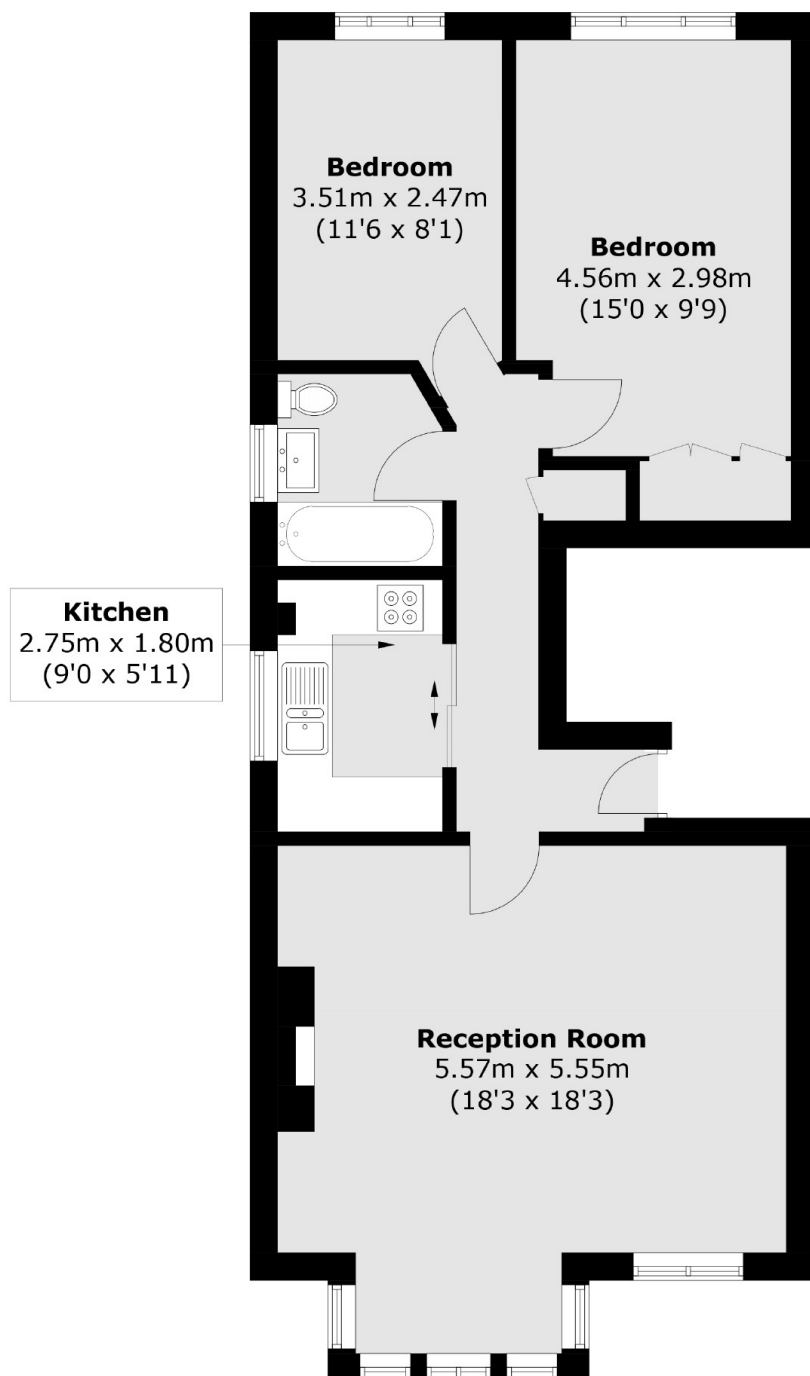
## Chiswick Lane, W4

Situated on Chiswick Lane, this apartment with two double bedrooms features a spacious reception room, a separate kitchen, two bedrooms, and a generously sized family bathroom.

This apartment boasts an ideal location, offering convenient access to Chiswick High Road's local amenities. Additionally, it is situated just a short distance away from the heritage site of Chiswick Park and the scenic River Thames.



# Chiswick Lane, London, W4



Total area (approx.): 68.0 sq. m (731.9 sq. ft)