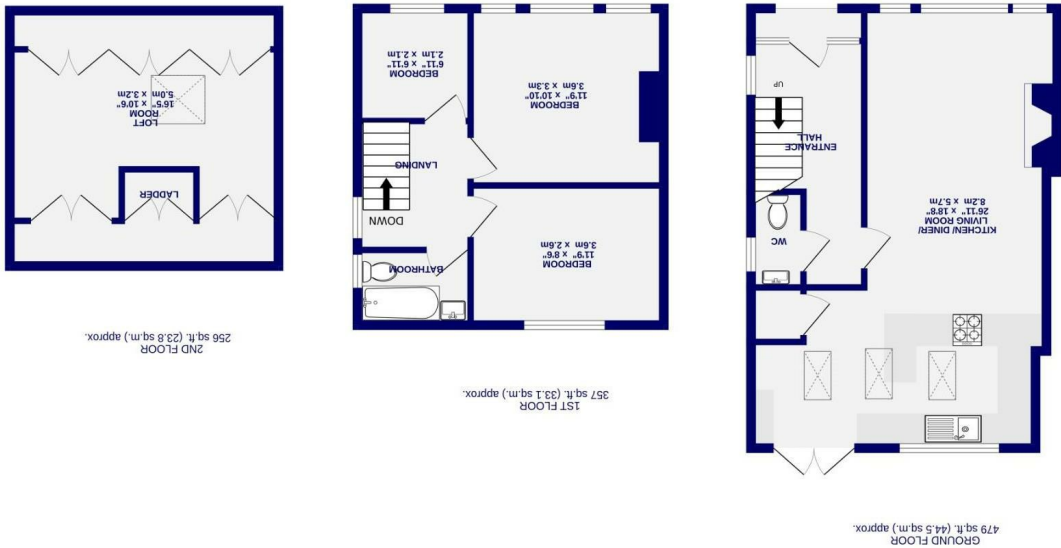




# St. Lukes Grove , York YO30 6DD

Freehold  
Council Tax Band - B

- Extended Semi Detached House
- Three Bedrooms & Attic Room
- Open Plan Living Room With Log Burner
- Modern Kitchen Extension With Vaulted Ceiling
- Bathroom & Cloakroom
- Off Street Parking & Gardens
- EPC- C



These particulars have been prepared as accurately and as reliably as possible, but should not be relied upon as 'statement of fact'. If there is any point which is of particular importance to you, please contact the office and we would be pleased to check the information. We have not tested any services, appliances, equipment or facilities and nothing in these particulars should be deemed to be a statement that they are in good working order, or that the property is in good structural condition or otherwise. Any areas, measurements, floor plans or distances referred to are given as a guide only and are not precise. Purchasers must satisfy themselves by inspection or by otherwise regarding the items mentioned above and as to the correctness of each of the statements contained in these particulars. No person in the employment of Ashtons has any authority to make or give any representation or warranty whatsoever in relation to this property or these particulars nor enter into any contract relating to the property on behalf of the vendor.



St. Lukes Grove  
, York  
YO30 6DD

£365,000

 3  1

Situated in this sought after location, less than a mile from the city centre we are proud to offer this tastefully extended semi detached house with the benefit of three bedrooms as well as an attic storage room.

The ground floor space has been extended to provide luxury open plan living with a superb kitchen opening to a the sitting room with oak floor and log burner. There is also a cloakroom and entrance hall on the ground floor and the benefit of off street parking and a southerly facing rear garden.

A great opportunity to acquire an immaculate family house so close to the city centre with off street parking and a garden.

Council Tax Band- B

