



Strathnairn Street, SE1

£760,000

A highly attractive semi-detached freehold home featuring a substantial rear garden, a spacious fully fitted kitchen, and a large living room with ample space for dining and entertaining. The property further benefits from three well-proportioned bedrooms and a modern family bathroom. Offered chain free, with permit parking available.

Strathnairn Street is a quiet residential street, tucked back from Southwark Park Road and St James's Street, within easy reach of both Bermondsey Underground and South Bermondsey Station and only one stop away from London Bridge, Bermondsey Street, Borough Market and the South Bank.

Features

- Freehold House
- Spacious Living Room
- Separate Kitchen
- Large Rear Garden
- Extension Potential STPP
- Permit Parking
- Chain Free Sale



Strathnairn Street, SE1

The house offers a wonderful sense of space and is flooded with natural light, thanks to its triple-aspect layout, semi-detached positioning, and impressive double reception room. Plantation-style blinds feature on almost all windows throughout the property.

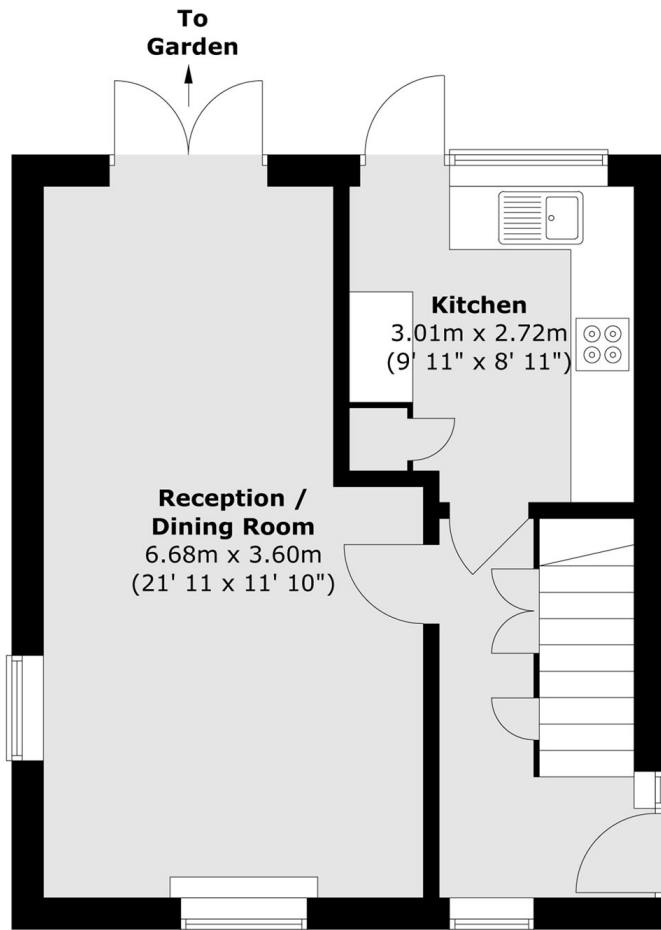
The ground floor comprises a particularly generous main reception room with hardwood flooring, opening directly onto the garden via French doors. The garden itself is designed for low maintenance, with a combination of decking and paving, and benefits from additional access through the kitchen as well as a rear garden gate.

Upstairs are two spacious double bedrooms, both with built-in wardrobes, a further single bedroom, and a family bathroom. There is also access to a large boarded loft, offering excellent storage space. The property retains significant scope for extension, subject to the necessary planning permissions, including potential to extend to the rear and into the loft.

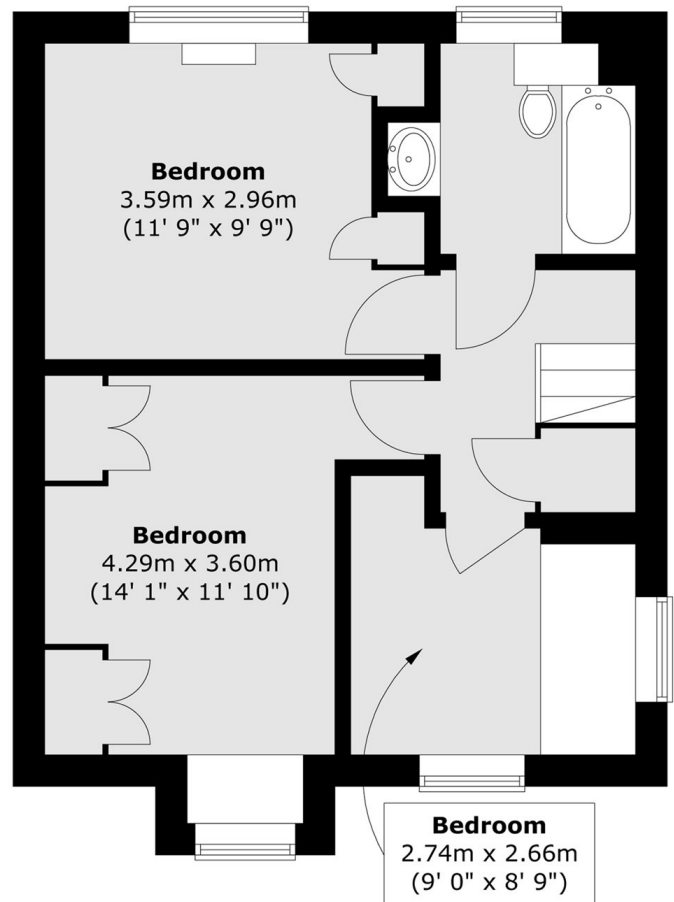


Strathnairn Street, London, SE1

Ground Floor



First Floor



Total area (approx.) : 76.9 sq. m (828 sq. ft)