



135, Holland Drive, Lily Hay, Shrewsbury, SY2 5TH
£1,350 Per Month



135, Holland Drive, Lily Hay, Shrewsbury, SY2 5TH

£1,350 Per Month

VIRTUAL TOUR AVAILABLE - Superb three bedroom semi-detached house recently constructed by Taylor Wimpey and conveniently positioned within the Lily Hay development at the top of Preston Street on the south-eastern edge of Shrewsbury. Benefitting from a garage, ample driveway parking, second floor master suite, fantastic road links, walking distance to town and a host of fantastic local amenities.

Available: 04/08/26

Description

Comprising: entrance hall, kitchen/dining room complete with breakfast bar, integrated fridge/freezer, oven, gas hob, washing machine and dishwasher, dining area, WC, living room with patio doors to rear garden. Stairs to first floor landing, two double bedrooms, family bathroom with shower over bath. Door allowing access to stairs for master suite, very spacious master bedroom with views across to the Wrekin, master en-suite. Driveway parking and garage. Front and rear garden. Gas central heating. Double glazing. EPC B.



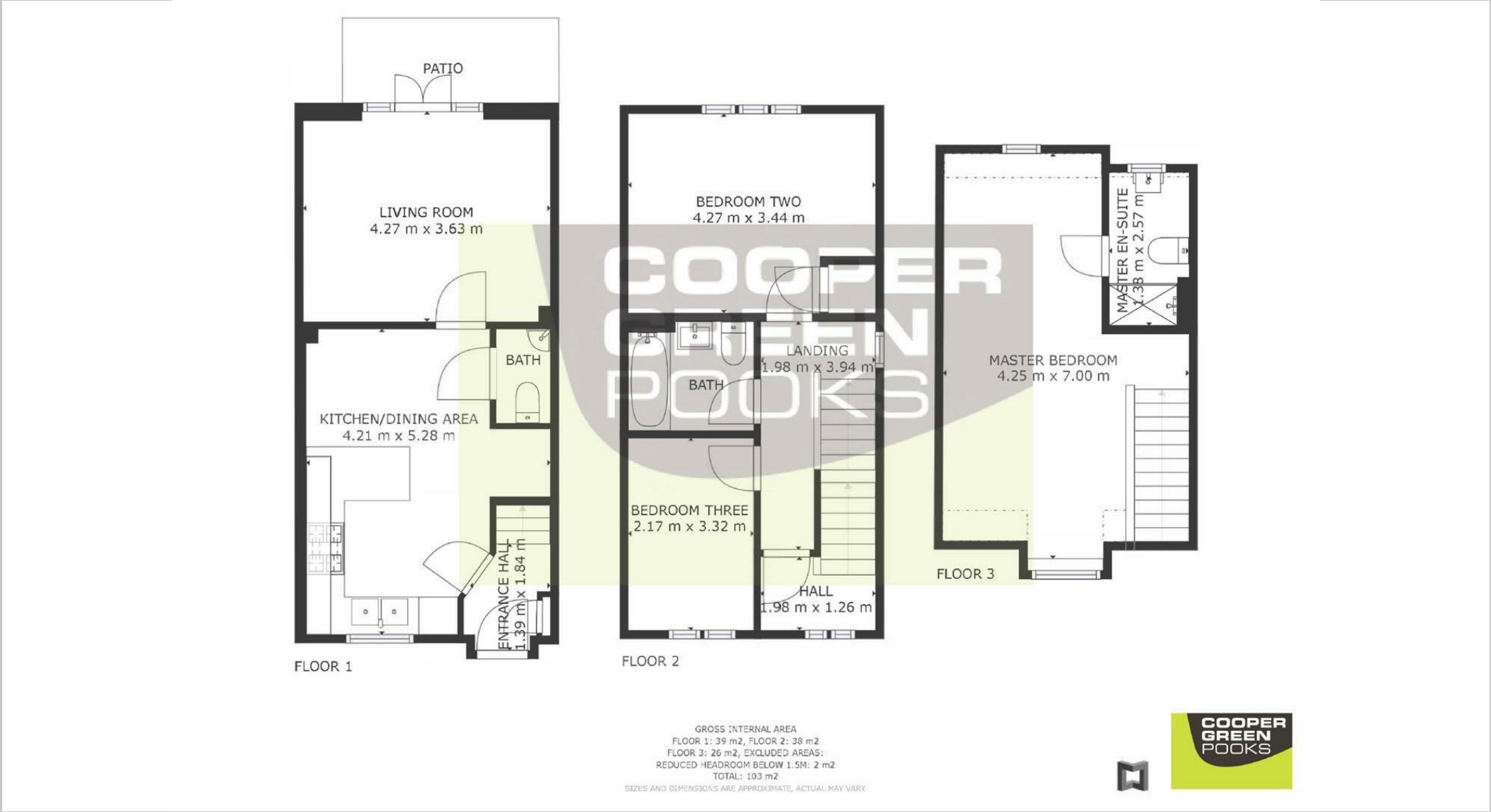
Unfurnished

Council Tax Band: C

Available: 4th August 2026

EPC: B

Floor Plans



These particulars, whilst believed to be accurate are set out as a general outline only for guidance and do not constitute any part of an offer or contract. Intending purchasers should not rely on them as statements of representation of fact, but must satisfy themselves by inspection or otherwise as to their accuracy. No person in this firm's employment has the authority to make or give any representation or warranty in respect of the property.