



4 Penny Close

Fishponds, Bristol, BS16 2NY

Asking price £450,000



4



2

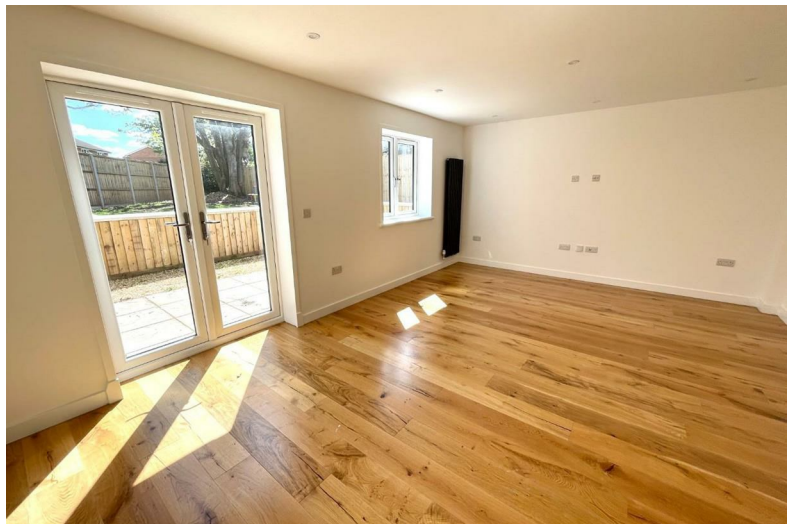


1



B

4 Penny Close



Description

This lovely 4 bedroom newly built semi detached house set on this corner plot offers modern living in a well proportioned home finished to a high standard set in a small cul- de-sac of 4 houses on the Fishponds / Downend border.

With its lovely modern style and attention to detail the house comprises inner hallway , cloakroom, modern well designed kitchen / dining room and a full width living room to the ground floor, 3 bedrooms (one with ensuite shower room) and a family bathroom and stairs to a large light and airy master bedroom above.

With a good sized rear garden with large patio area and side access the house also boasts off street parking for 2 cars, double glazing, gas central heating, newly installed appliances, alarm system, carpets and flooring only a couple of years ago and is offered with NO CHAIN !!

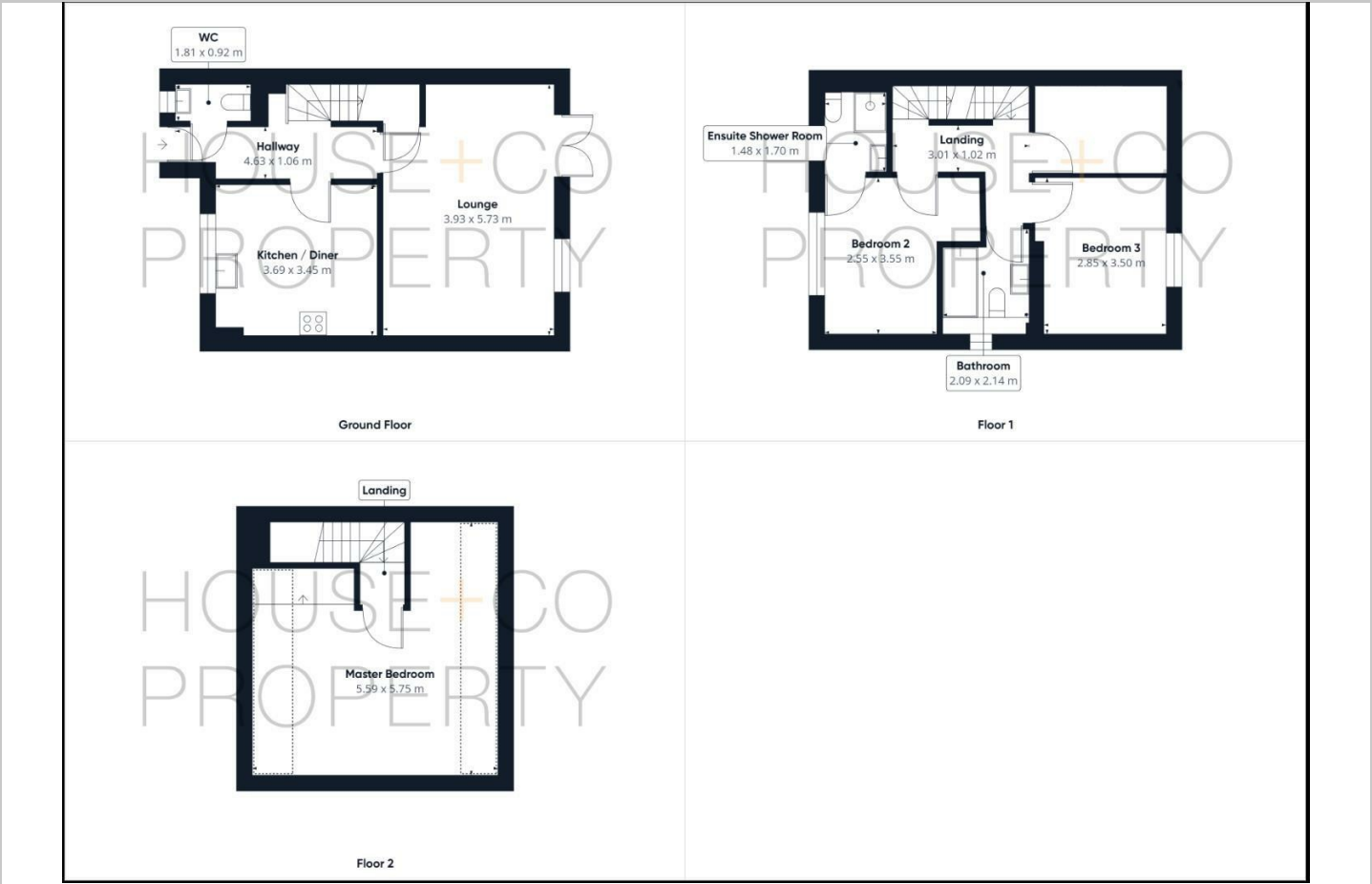
Check out the VIRTUAL TOUR and get in touch to come and have a look !

- NEW BUILD 4 BEDROOM HOME
- FINISHED TO A HIGH STANDARD
- MATURE CORNER PLOT GARDEN
- FULL WIDTH LOUNGE
- CUL-DE-SAC LOCATION
- NO CHAIN !
- SET OVER 3 FLOORS
- OFF STREET PARKING FOR 2 CARS
- STYLISH KITCHEN / DINING ROOM
- READY TO MOVE IN

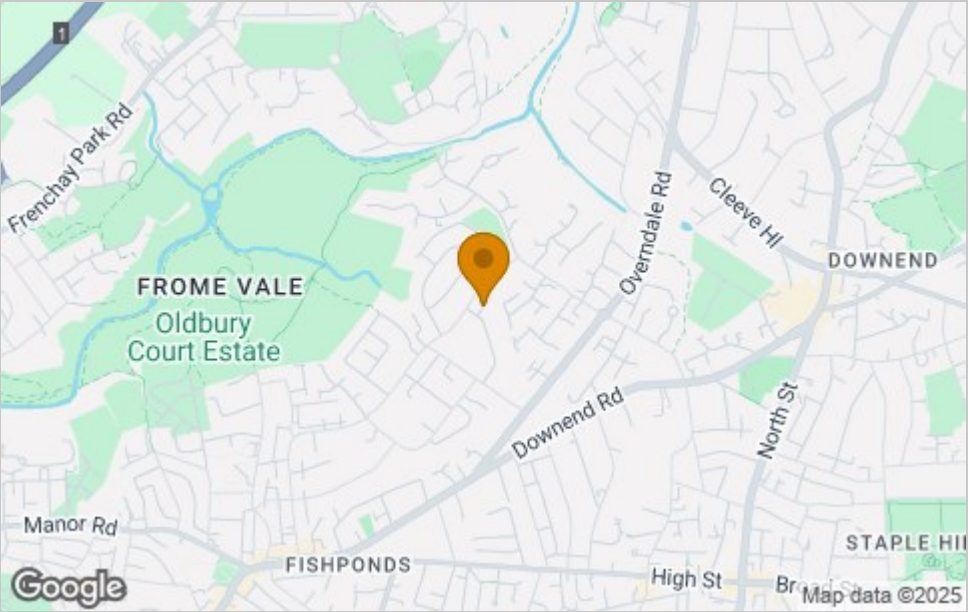




Floor Plan



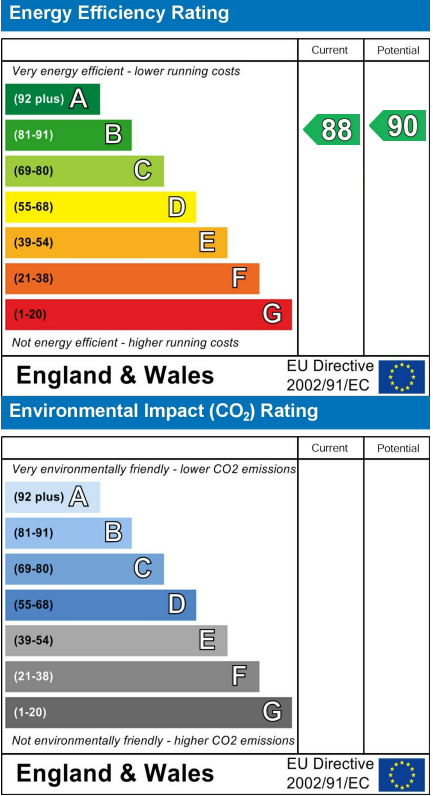
Area Map



Viewing

Please contact our House + Co Property (Sales) Office on 0117 907 0020 if you wish to arrange a viewing appointment for this property or require further information.

Energy Efficiency Graph



These particulars, whilst believed to be accurate are set out as a general outline only for guidance and do not constitute any part of an offer or contract. Intending purchasers should not rely on them as statements of representation of fact, but must satisfy themselves by inspection or otherwise as to their accuracy. No person in this firm's employment has the authority to make or give any representation or warranty in respect of the property.