







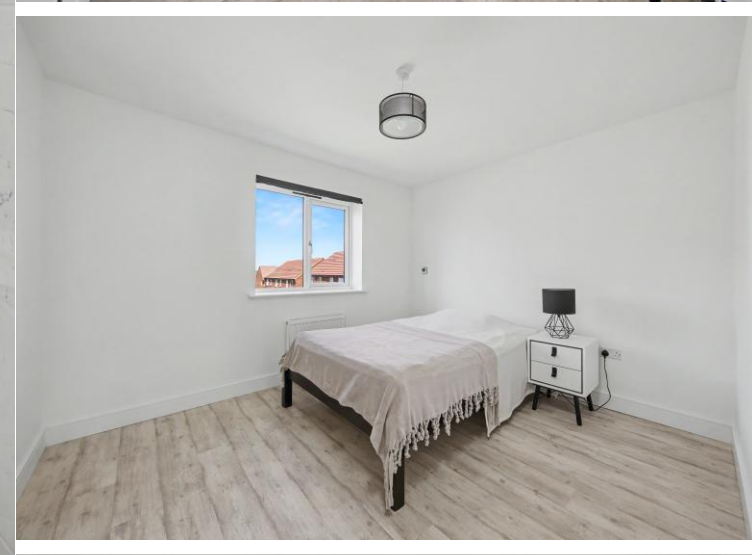
28 Cherry Drive

Holmewood • Chesterfield • S42 5GH

£325,000

Beautifully upgraded four-bedroom detached home with high-spec finishes throughout located within the popular residential area of Holmewood. The property situated on a private road and is well regarded for its convenience and accessibility, offering a wide range of everyday amenities including local shops, schools and services nearby. Further facilities can be found in Clay Cross and Chesterfield town centre. Transport links are excellent, with regular bus services, straightforward access to major road networks including the M1, and Chesterfield train station within easy reach. The area is well served by local schools and benefits from nearby green spaces, parks and countryside walking routes, making this an ideal family home that is ready to move into. The front door opens into a welcoming hallway. The first door on the right leads into the living room, a well-proportioned front-facing space offering a private and comfortable seating area. To the rear of the property is the modern kitchen diner. Upgraded L shaped kitchen featuring premium worktops and integrated Bosch appliances, including built-in oven, microwave and dishwasher, and space for additional freestanding appliances. A breakfast bar provides informal seating, while the dining area offers ample space for a family table and features double doors opening onto the rear garden. An internal door from the kitchen diner leads into a useful utility room, a convenient downstairs WC, and provides further access to the rear of the property. The ground floor also benefits from internal access to the integral garage. The bespoke oak staircase with LED lighting leads to the first floor. To the first floor are four well-proportioned bedrooms. The principal bedroom is front facing and a good double, benefitting from a modern, fully tiled with contemporary large format tiles en-suite shower room fitted with a walk-in feature rainfall shower, wash basin and WC. Bedrooms two and three are both generous doubles overlooking the rear garden. The fourth bedroom faces the front of the property and is a good-sized room, suitable as a bedroom, home office or study. The family bathroom is modern and fully tiled with contemporary large format tiles, fitted with a three-piece suite comprising a bath with overhead shower, wash basin and WC. Energy Efficient infrared underfloor heating with zoned control & individual thermostats in each room (9 in total). Externally, the large rear garden offers an excellent blank canvas, ready to be landscaped to personal taste. It currently features a small patio seating area and a good-sized, enclosed and private lawn. To the front of the property is a small lawned garden, driveway providing parking for up to four cars, and access to the integral single garage which includes an EV charging socket.





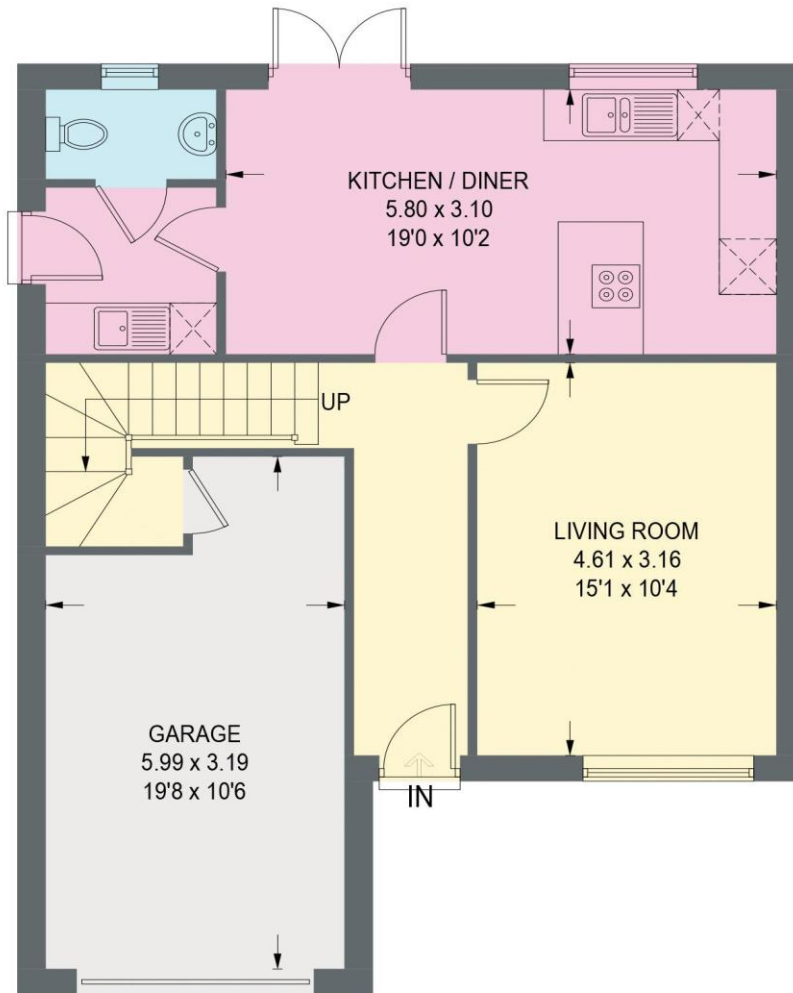
- Beautifully Upgraded Four Bedroom Detached Home
- Infrared Underfloor Heating w/ Zoned Control
- Upgraded Kitchen Diner w/ Bosch Appliances
- Bespoke Oak Staircase w/ LED Lighting
- Additional Utility Room, WC, and Integral Garage Access

- Four Well Proportioned Bedrooms, Principle Room w/ Ensuite
- Fully Tiled Three Piece Suite Family Bathroom w/ Rainfall Shower
- Enclosed Rear Garden - Offering Blank Canvas
- Driveway Parking for Four Cars & Integral Single Garage w/ EV Charging Point
- Council Tax Band D/EPC Rating B

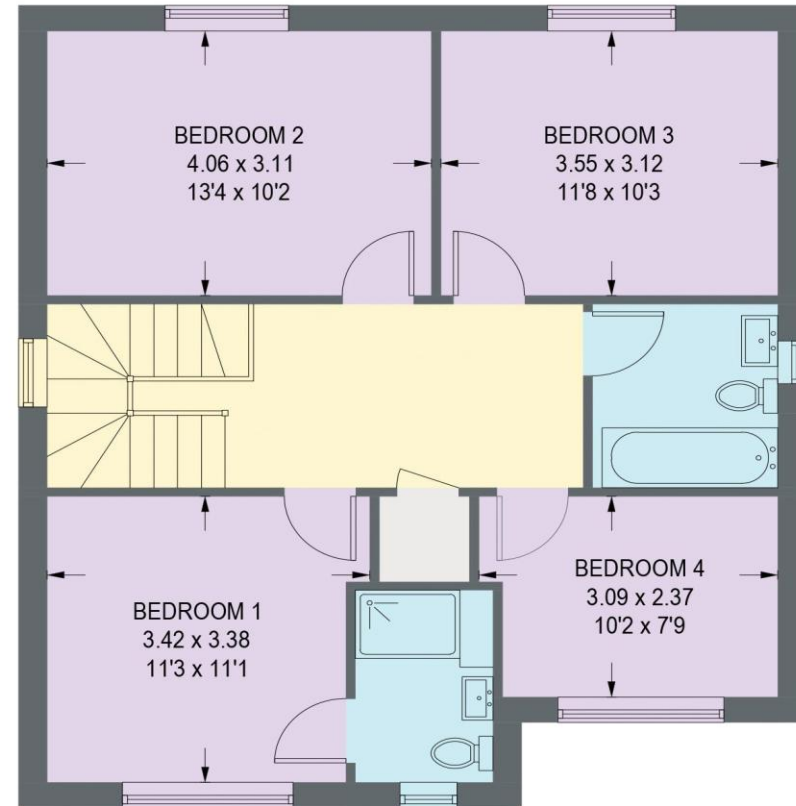


28 CHERRY DRIVE

APPROXIMATE GROSS INTERNAL AREA = 133.0 SQ M / 1432.0 SQ FT
(INCLUDING GARAGE)



GROUND FLOOR (INCLUDING GARAGE)
68.1 SQ M / 732.7 SQ FT



FIRST FLOOR = 65.0 SQ M / 699.3 SQ FT

Illustration for identification purposes only, measurements are approximate, not to scale. (ID1295088)

