



Radburn Drive, Coventry, CV7 8HY

**SHELDON  
BOSLEY  
KNIGHT** LAND AND  
PROPERTY  
PROFESSIONALS

# Property Description

\*\*\* AVAILABLE NOW \*\*\* This brand new two-bedroom home is located on Radburn Drive, Coventry, offering modern, energy-efficient living in a desirable residential development with convenient access to local amenities and transport links.

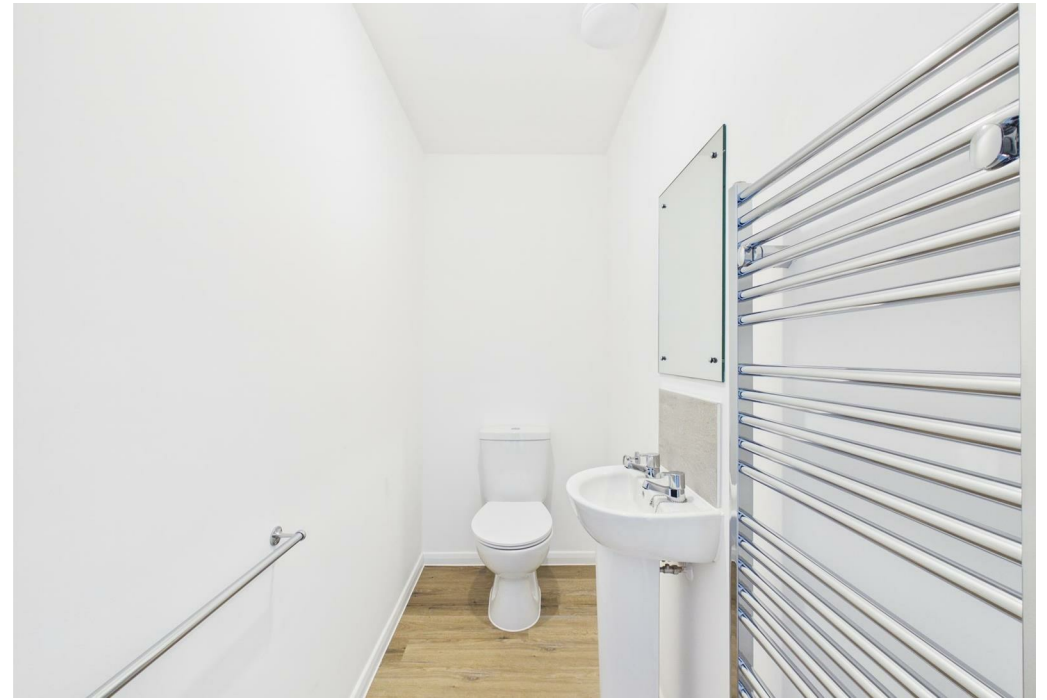
The ground floor comprises a welcoming entrance hallway, a bright and spacious lounge, a modern fitted kitchen/diner, and access to the private rear garden.

To the first floor there are two bedrooms and a family bathroom with bath, shower over, WC and sink.

Externally, the property benefits from a private driveway, rear garden, and modern energy-efficient features including an air source heat pump, electric vehicle charging point, and double glazing.

Offered UNFURNISHED. Council Tax Band TBC. Energy Rating TBC.







## Key Features

- Available Now - ALTERNATIVE DEPOSIT OPTION AVAILABLE
- Long term tenancies
- High energy efficiency (all properties are either an EPC A or EPC B rating)
- Professionally managed
- Unfurnished
- Bosch appliances
- Solar PV - The property benefits from installed Solar PV panels, helping to reduce energy bills and improve overall energy efficiency.
- Energy Rating TBC (A or B)
- PETS WELCOMED
- Electric Vehicle Charging - The property benefits from a dedicated electric vehicle charging point, offering at home charging and supporting an eco friendly lifestyle.

**£1,250 Per Month**