

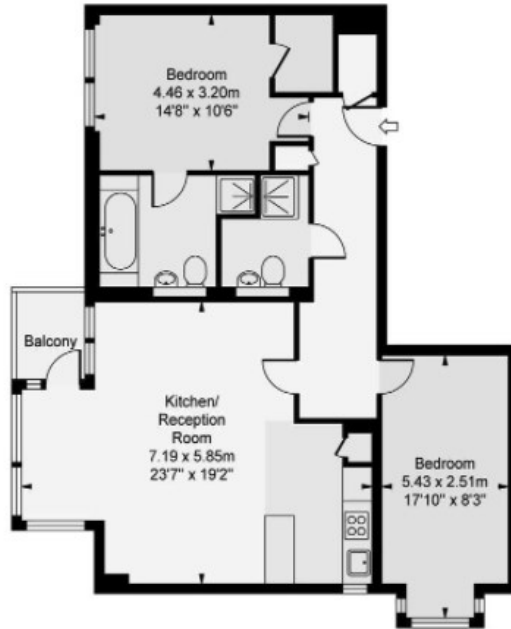


Hepworth Court , Gatliff Road, Grosvenor Waterside SW1W 8QN

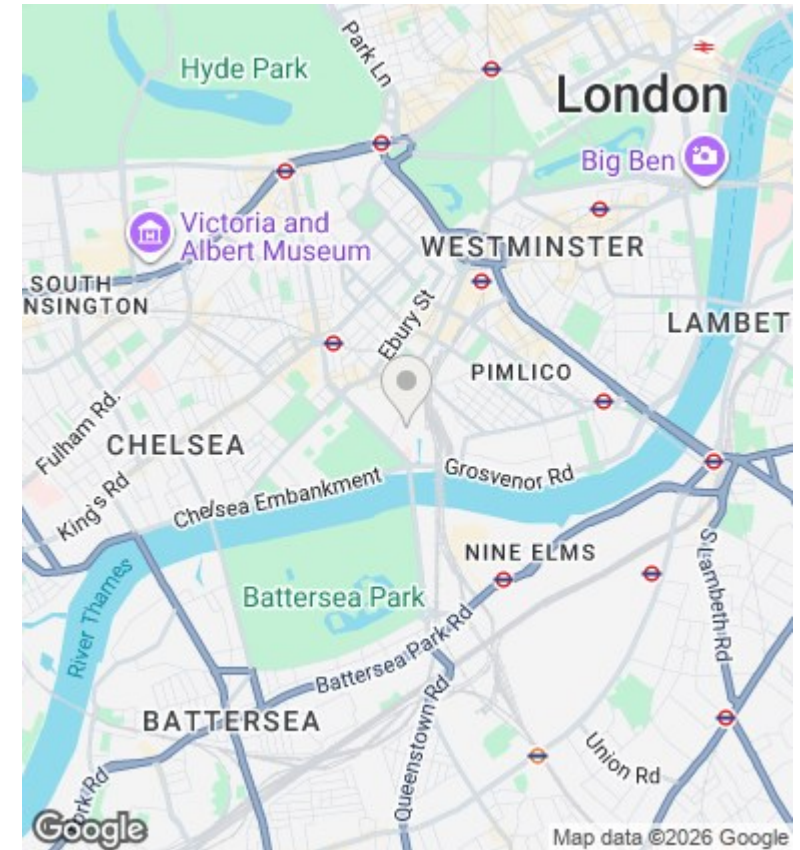
£1,380,000

- 24 HOUR CONCIERGE
- GYM AND SPA
- WALKING DISTANCE TO SLOANE SQUARE AND VICTORIA TUBE STATIONS
- VIDEO VIEWING AVAILABLE
- WOODEN FLOORS
- ON SITE FOOD SHOP AND RESTAURANT / COFFE SHOP
- UNDER FLOOR HEATING AND AIR COOLING
- MOMENTS AWAY FROM BATTERSEA PARK
- LAUDRY SERIVCE

Hepworth Court,
Grosvenor Waterside,
Gatiff Road, Chelsea, SW1W
Approximate Gross Internal Area
911 sq ft / 84.63 sq m



Second Floor



Viewings

Viewings by arrangement only.
Call 02077225022 to make an appointment.

Council Tax Band

C

EPC Rating:

C

Energy Efficiency Rating		
	Current	Potential
Very energy efficient - lower running costs		
(92 plus) A		
(81-91) B		
(69-80) C	70	70
(55-68) D		
(39-54) E		
(21-38) F		
(1-20) G		
Not energy efficient - higher running costs		
England & Wales	EU Directive 2002/91/EC	