

22 Chester Street, Coventry, CV1 4DJ

Offers Over £349,500

Situated in the Condon of Coventry, this impressive mid-terrace house on Chester Street presents a remarkable investment opportunity. With six well-appointed reception rooms, this property has been thoughtfully designed to accommodate a House in Multiple Occupation (HMO) setup, making it an ideal choice for those seeking to invest in the rental market.

The property boasts six spacious individual studio apartments, each equipped with its own kitchen and bathroom, ensuring privacy and convenience for all tenants. This arrangement not only enhances the living experience but also allows for separate billing, making it a hassle-free option for both landlords and tenants alike.

In good condition and fully let, this HMO property is strategically located close to the city centre, providing easy access to local amenities, transport links, and the vibrant culture that Coventry has to offer. The current income stands at an impressive £32,000 per annum, with potential for further growth, making this an enticing prospect for savvy investors.

With a valid HMO licence in place, this property is compliant with local regulations, ensuring peace of mind for prospective buyers. Whether you are looking to expand your property portfolio or enter the rental market, this well-maintained house offers a unique opportunity to secure a profitable investment in a sought-after location. Do not miss the chance to explore the potential this property holds.

Studio One
14'9" x 9'10" (4.5 x 3.01)



Studio Two
12'3" x 13'0" (3.75 x 3.98)



Studio Three
16'11" x 10'5" (5.18 x 3.18)



Studio Four
14'5" x 12'5" (4.4 x 3.8)



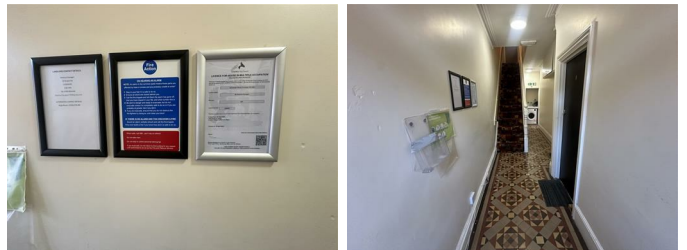
Studio Five
12'5" x 9'10" (3.8 x 3.02)



Studio Six
13'1" x 10'5" (3.99 x 3.19)



Entrance hall



Landing

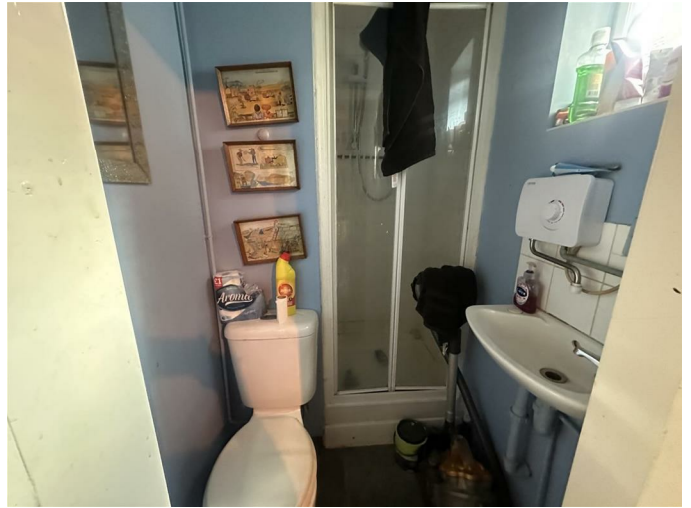
Lead up



Garden



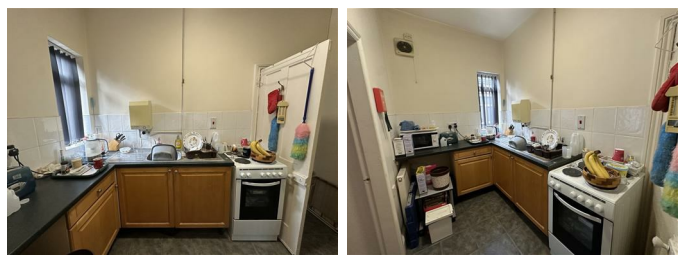
Kitchen five



Kitchen one



Kitchen six



Shower room one



kitchen Two

Kitchen Three



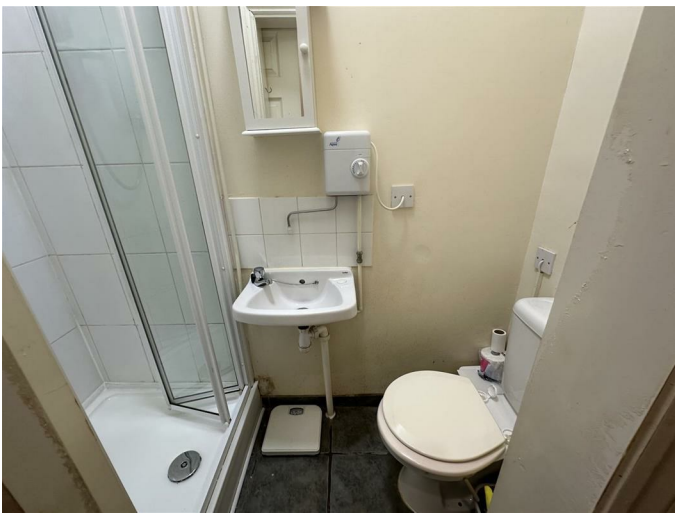
Kitchen Four



Sower room two

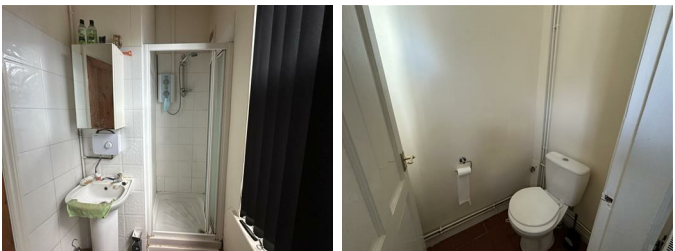


Shower room four



Shower room five

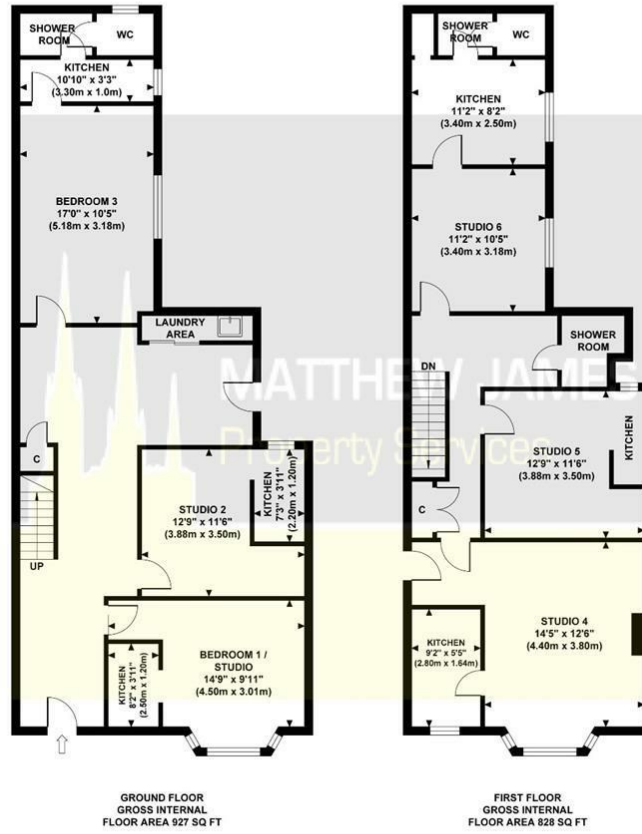
Shower room six



Floor Plan

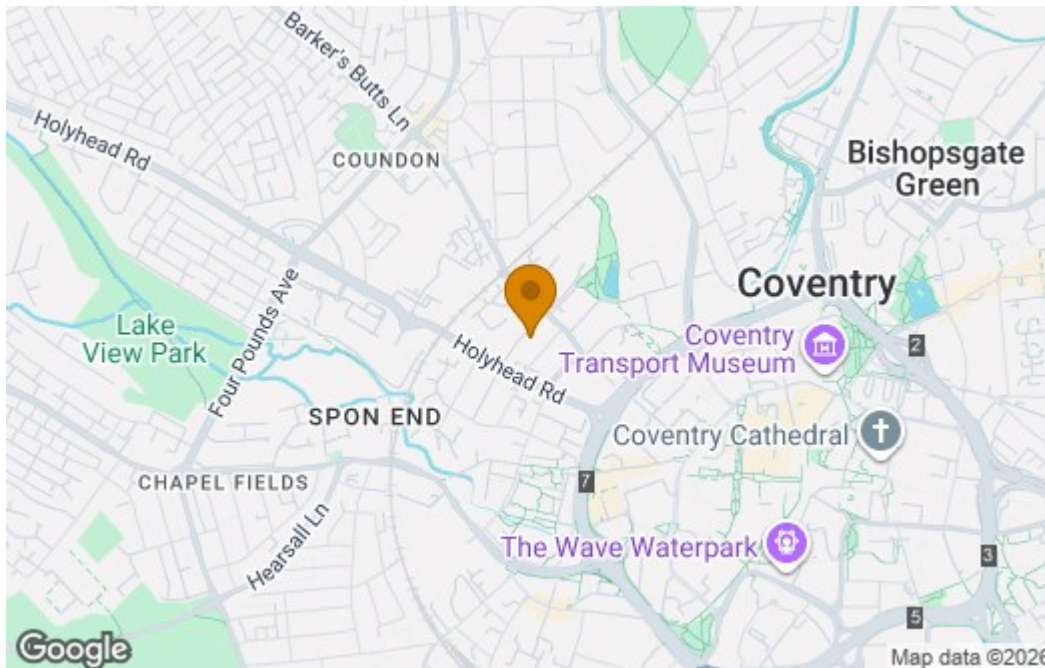
22 CHESTER STREET

Approximate Gross Internal Area
1755 sq ft / 163.04 sq m

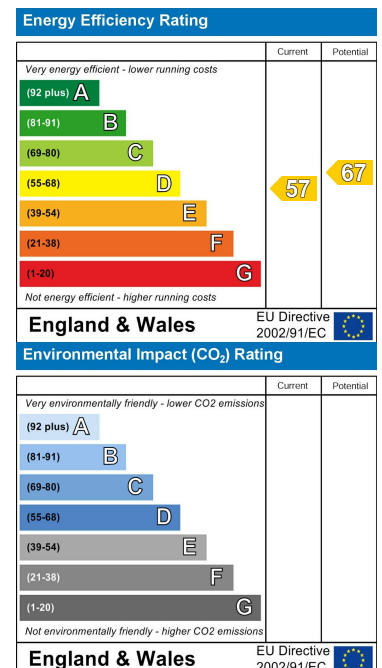


Although every attempt has been made to ensure accuracy, all measurements are approximate and no responsibility is taken for any error, omission, or mid-statement. This floor plan is for illustrative purposes only and not to scale. Measured in accordance to RICS standards.

Area Map



Energy Efficiency Graph



These particulars, whilst believed to be accurate are set out as a general outline only for guidance and do not constitute any part of an offer or contract. Intending purchasers should not rely on them as statements of representation of fact, but must satisfy themselves by inspection or otherwise as to their accuracy. No person in this firm's employment has the authority to make or give any representation or warranty in respect of the property.

CONTACT INFORMATION

24a Warwick Row, Coventry CV1 1EY

02477 170170

info@matthewjames.uk.com

www.matthewjames.uk.com

Facebook

Twitter