



Guide Price
£400,000

Freehold

3x  2x  1x 

**Halden Close, High
Halden, Ashford, Kent,
TN26**

OVER 60?

Secure this property
for up to **59% less!**

Wards
Helping you move forwards



Main features

- Impressive 3 bedroom house in sought after village location
- Off-road parking for several vehicles
- Sunny, low maintenance garden
- Kitchen/diner perfect for family life
- Separate sitting room to relax in

Accommodation

GROUND FLOOR

Entrance Hall
 Cloak Room
 Sitting Room: 19'4 x 9'9 (5.90m x 2.97m)
 Kitchen/Diner: 17'9 x 13'9 (5.41m x 4.19m)

FIRST FLOOR

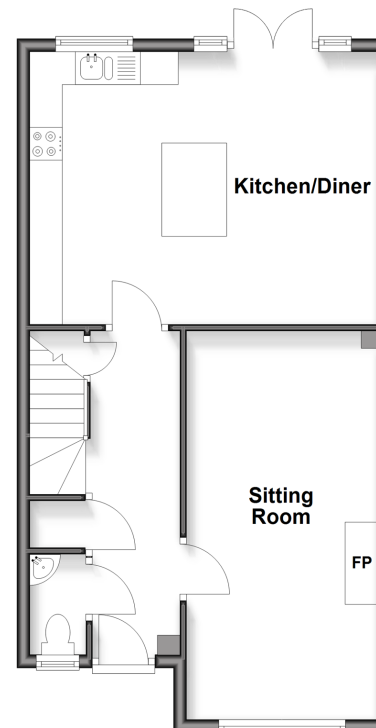
Landing
 Family Bathroom
 Bedroom 1: 11'9 x 10'10 (3.58m x 3.30m)
 En-Suite Shower Room
 Bedroom 2: 13'8 x 9'0 (4.17m x 2.75m)
 Bedroom 3: 9'11 x 8'4 (3.02m x 2.54m)

OUTSIDE

Front and Rear Gardens
 Off Road Parking

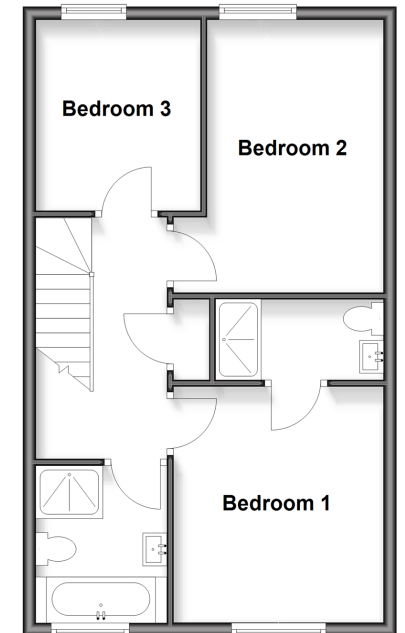
Ground Floor

Approx. 52.0 sq. metres (559.8 sq. feet)



First Floor

Approx. 49.1 sq. metres (528.6 sq. feet)



Call Tenterden - 01580 766002 ■ wardsof Kent.co.uk

■ Through a Homewise Home For Life Plan people aged 60+ can secure this property for up to 59% less, by purchasing a Lifetime Lease



14008331/20260404/DS/SRH